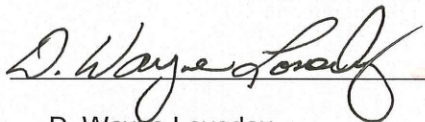


Annual MOM Progress Report

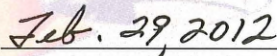
2011

Submitted to EPA on February 29, 2012

I certify under penalty of law that this document and all attachments were prepared under my direction or supervision in accordance with a system designed to assure that qualified personnel properly gather and evaluate the information submitted. Based on my inquiry of the person or persons who manage the system, or those persons directly responsible for gathering such information, the information submitted is, to the best of my knowledge and belief, true, accurate and complete. I am aware that there are significant penalties for submitting false information, including the possibility of fine and imprisonment for knowing violations.



D. Wayne Loveday



Date



004998

Table of Contents

Section 1	Introduction	1
Section 2	Grease Control Program	8
Section 3	Continuing Sewer System Assessment Program	12
Section 4	Infrastructure Rehabilitation Program	17
Section 5	Gravity Line Preventive Maintenance Program	19
Section 6	Sewer Overflow Response Plan	20
Section 7	Other MOM Programs	22
Section 8	Private Lateral Program	24

Appendices

A	Grease Control Program Summary Tables
B	Pump Station Maintenance Activities and Schedule
C	Summary Table of Pump Stations Using Chemical Injection and Odor Control
D	Pump Station and Storage Facility Sample Inspection Checklists
E	Summary of Changes Made to Other Consent Decree Programs

Section 1: Introduction

KUB's Management, Operations, and Maintenance (MOM) programs continue to make significant improvements in the wastewater collection system resulting in both reduced overflow frequencies and volumes since 2003. The significant improvements in our MOM programs include increased asset inspections, more frequent gravity main cleaning, increased system storage for better wet-weather overflow control, and rehabilitation of the approximately 1,300 miles of collection system pipes.

Sanitary Sewer Overflows

KUB's continued focus on MOM programs and system rehabilitation has produced significant reductions from the number of sanitary sewer overflows (SSOs) that occurred before KUB implemented its PACE 10 Program in 2004. [PACE 10 is KUB's accelerated 10-year, \$530 million wastewater improvement program to aggressively attack the problem of sewer overflows. "PACE" stands for "Partners Acting for a Cleaner Environment."] Figure 1 illustrates the SSO event history for KUB and shows significant rain events are having less of an impact on our wastewater system, although rainfall totals and frequency still influence the occurrence of wet-weather SSOs.

KUB experienced 83 wet-weather overflows in 2011 versus over 200 in 2003. The increasing trend in wet-weather overflows from 2008 to 2011 seen in Figure 1 can be attributed to the influence of total rainfall received during those years, which was higher than the three years prior to this period. Periods of greater and sometimes extended rainfall create longer lasting effects on infiltration and thus higher flows in the collection system in areas that have not undergone rehabilitation yet. These conditions make the system more susceptible to overflows during heavy rain events.

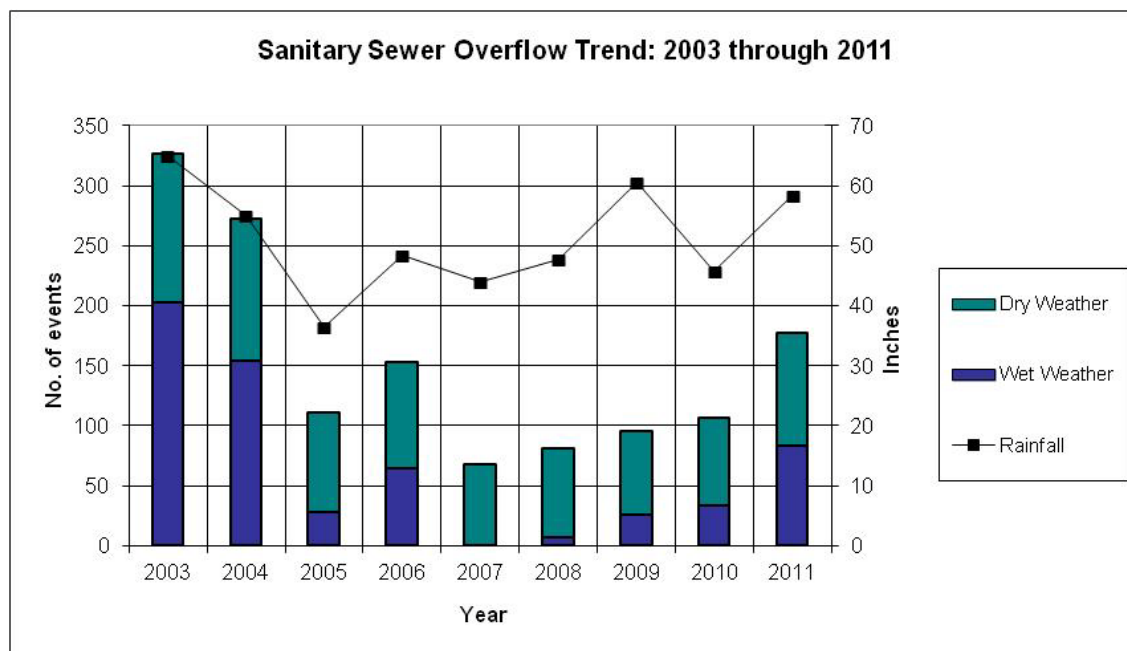


Figure 1. Sanitary Sewer Overflow Trend: 2003 through 2011

Note: KUB's highest SSO numbers were in 2003, when rainfall reached a record high. As KUB completed early PACE 10 projects, SSOs began to trend down. (The 2006 and 2011 spikes were due to single extraordinary rainfall events.) Rainfall in 2009 and 2011 approached the 2003 high, and although SSOs went up, they were still lower than in a similar rainfall year before PACE 10.

From February to April 2011 the Knoxville area received over 21 inches of rainfall, with some isolated areas receiving even more. Continuous wet weather creates saturated ground conditions, which is also known as high antecedent moisture conditions. Not only was the soil saturated due to the heavy amount of rainfall received during this period but some of the rainfall occurred quickly as heavy events. This period of heavy rain produced 60 out of the total 83 wet weather overflows shown in Figure 1.

In fact, the rain event that occurred on February 28 was considered a 35-year return period storm, producing an average of three inches of rain in three hours (See Figure 2). A total of 32 sewer overflows were reported as a result of this single rain event. The rainfall caused substantial, widespread flooding leaving much of our wastewater collection system underwater for a period of time, which resulted in significant amounts of inflow and infiltration into the KUB wastewater system in areas where rehabilitation work has not been completed. All four of KUB's wastewater storage tanks were filled to maximum capacity, retaining approximately 22 million gallons of rainwater to prevent sewer overflows. KUB requested the February 28, 2011 storm event be recognized as a Force Majeure event in a letter to the EPA on March 18, 2011. Heavy rains continued into March with approximately six more inches of rain recorded.

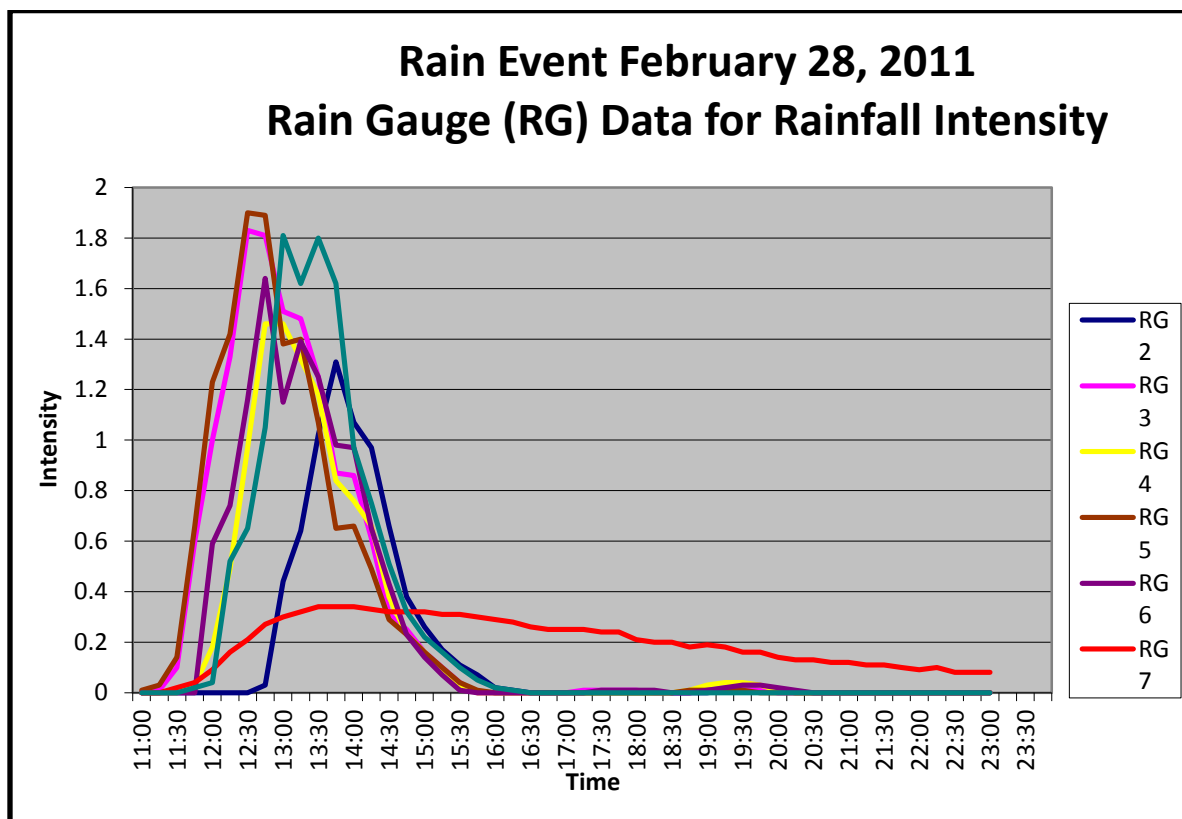


Figure 2: Rain Event February 28, 2011; Rain Gauge (RG) Data for Rainfall Intensity

There were also two large rain events in April 2011 that contributed to multiple SSOs. On April 15, KUB's service area received approximately 2.5 inches of rain in 15 hours, and then on April 27, there was an average of three inches of rain in 13 hours. Both of these storms were considered to be greater than a two-year return period storm. Twenty-four more wet-weather SSOs occurred as a result of these two rain events. Approximately 70 percent of the wet-weather SSOs reported for 2011 were associated with these three significant storm events.

The Knoxville Airport rain gauge monthly data for Spring 2011 notably exceeded monthly averages for the Knoxville area. From February to April 2011, monthly totals exceeded averages by 17 percent in February, 33 percent in March, and 119 percent in April. In addition to the overall monthly totals exceeding monthly averages, individual storm intensities from temporary rain gauges in the Fourth Creek system in Spring 2011 registered storms that exceeded 50 year, one-hour intensities, and over two-year, 24-hour intensities. These overall increases in precipitation combined with high storm intensities provided for unusual conditions that negatively impacted the collection system.

Figure 3 shows how heavy rainfall and antecedent moisture conditions affect the frequency of wet-weather overflows. Although the area received heavy rainfall from events recorded in September (8.7 inches) and in November (7.1 inches), the drier and warmer periods preceding these events allowed the saturated ground to dry out and absorb some of the heavier rainfall to prevent inflow from standing water.

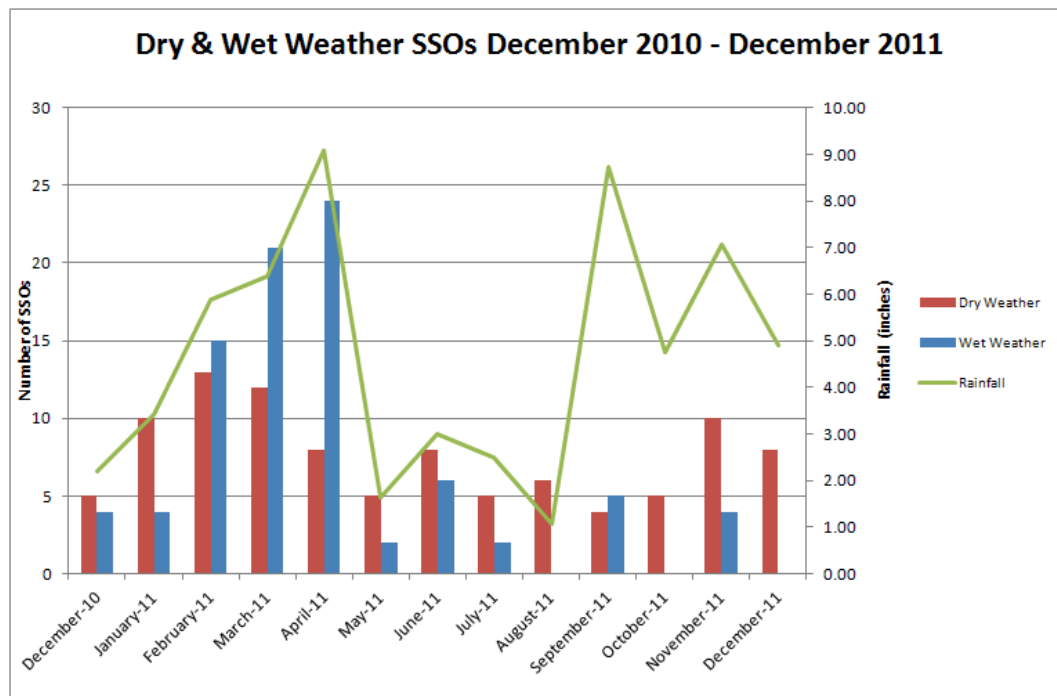


Figure 3. Dry & Wet-Weather SSOs December 2010–December 2011

NOTE: While 15 wet-weather SSOs were reported on February 28, 17 wet-weather SSOs were not discovered until after the flood waters receded in the following days, thus reflecting high numbers of wet-weather SSOs in both February and March 2011.

Improvements already made in KUB's collection system have lessened the effects of rainfall and antecedent moisture. It is notable that rainfall with high antecedent soil moisture conditions in 2011 produced smaller numbers of events and much smaller secondary diversion volumes when compared to rain events prior to PACE 10 implementation in 2004. Thanks to improved process controls during wet weather and completed improvement projects, including construction of additional wet-weather wastewater storage tanks and approximately 190 miles of sewer mains replaced or rehabilitated after system assessments were completed, those rainfall events produced not only less wet weather SSOs, but also reduced the secondary diversion volume by almost 64 percent when comparing the December 2004 rain event to the February 2011 event.

Table 1. Wet Weather Event Comparisons

Event Period	Amount of Rainfall (inches)					Wet Weather SSOs	Secondary Diversion Volume (MG)
	1 Day	3 Day	5 Day	30 Day	60 Day		
Dec 6–10, 2004	2.07	2.58	4.4	9.87	15.53	45	105.14
Nov 29–Dec 5, 2010	2.35	2.97	3.52	5.91	10.94	9	35.45
Dec 31–Jan 1, 2011	2.4	2.52	2.52	4.16	10.9	4	12.62
Feb 24–Feb 28, 2011	3	3.39	4.9	5.87	9.29	32	38.21
April 14–April 16, 2011	1.49	2.86	2.86	9.08	15.46	17	17.11
April 25–April 27, 2011	2.61	2.95	3.23	9.08	15.46	7	10.22

KUB achieved substantial completion and the beneficial use of the Lower Third Creek and Second Creek Wastewater Storage Facilities on June 16, 2011. These tanks add 12 million gallons of peak-flow storage for the Kuwahee WWTP to further reduce wet-weather SSOs, reduce diversions, and provide improved operational flexibility during heavy rainfall.

KUB's wastewater storage facilities at Lower First Creek, Upper First Creek, Second Creek, Lower Third Creek, Upper Third Creek, and Walker Springs operated a combined total of 81 times in 2011, containing a total of 200.5 million gallons of wastewater. The tanks help KUB to prevent spikes in flow that exceed the hydraulic capacity of the collection system and meet requirements to address sewer overflows and protect our environment.

KUB maintains continued focus on its MOM programs and system rehabilitation to also reduce dry-weather overflows. Blockages were a leading cause of dry-weather overflows in 2011, accounting for 50 of the 94 overflows that occurred. Heavy rainfall also affects dry-weather overflows, in that it causes prolonged high flow levels in pipes, which encourages increased root growth into our system. Also, high flow levels scour solid materials from the gravity mains, leading to an increased risk of blockage related overflows due to increased solids movement. There is a trend of increased dry weather overflows in months where there are high amounts of rain or rain combined with high antecedent moisture conditions. Between February and April 2011, there were 33 dry weather overflows on KUB's system.

KUB continues to focus on reducing blockage-related overflows especially through the efforts of the Blockage Abatement (BA) and Grease Control programs. Grease and roots continue to be the leading causes, or major contributing factors, in blockage-related overflows. In addition to the 181 miles of BA footage, KUB and PACE 10 contractors cleaned and televised nearly 150 miles of gravity sewers in 2011. Under PACE 10, KUB repaired or replaced 377 manholes and approximately 25 miles of wastewater mains in the KUB system last year. Manhole Condition Assessment and the Gravity Sewer Assessment efforts were doubled in 2011, going from 6 percent completed in 2010 to 12 percent completed in 2011.

KUB continues an aggressive communication campaign to customers concerning grease. In 2011, KUB mailed grease letters to 2,200 customers near 21 grease-related overflows. Of these letters, 97 percent went to residential customers and 3 percent went to commercial customers. More than half of the commercial customers who received letters were non-food producing facilities. KUB also proactively implemented a grease equipment certification program in 2011 that requires annual inspections of traps and interceptors used by food service facilities. This effort will help ensure proper maintenance so that traps are effective at capturing all grease from the discharge.

MOM Programs

Grease Control Program

KUB maintains aggressive efforts to prevent grease discharges to the collection system from food service facilities (FSFs). Forty-eight FSFs installed new equipment or upgraded their external grease interceptors in 2011. Those efforts and investments by our customers continue to help prevent grease buildup in our system. KUB completed 1,328 inspections of 1,024 FSFs to determine their potential grease risk prior to issuing permits. Only 4 percent of the FSFs were rated as high risk or unacceptable for the 2012 permitting year.

KUB also continues to educate residential customers to prevent grease-related overflows. In areas where residential grease may be entering the system, KUB conducts additional televised inspections. The inspections help better identify the need for increased cleaning and public awareness efforts, such as Can the Grease (CTG). KUB placed additional emphasis on distributing educational information on proper grease disposal this past year. Program personnel participated in customer education events hosted by community organizations and promoted CTG in various customer communications and the KUB website. Customers receive educational materials explaining the proper means of grease disposal. The CTG cans are still given away during limited special events, such as home owner meetings, tenant meetings at apartment complexes, and promotional events. In

2011, KUB also distributed spatulas with the Can the Grease logo to customers near grease-related overflows as a new promotional and educational effort.

Gravity Sewer Preventive Maintenance

Another effort that continues to reduce dry-weather SSOs is our Blockage Abatement (BA) Program, a routine cleaning and inspection program to remove grease, roots, and debris from sewer mains.

The BA Program uses increased frequency of cleaning to prevent overflows in areas with previous problems until KUB schedules projects for more permanent repairs. The footage of mains on BA fluctuates each year as KUB completes scheduled repairs or identifies new areas where more cleaning is needed pending future projects.

In 2011, BA crews cleaned 954,727 feet (ft) (181 miles) and televised 348,590 ft (66 miles) of gravity sewers in our system.

Continuing Sewer System Assessment Program (CSSAP)

In addition to the BA footage, KUB crews and PACE 10 contractors proactively cleaned and televised 791,861 ft (150 miles) of sewers in 2011. KUB uses data from televised inspections to assess the condition of the assets for additional maintenance and/or system rehabilitation efforts. Under PACE 10, contractors also smoke-tested 791,861 ft (150 miles) of sewers and inspected 4,024 manholes in 2011. KUB also gathers additional information from its other MOM program efforts. This assessment information is collected as part of the Continuing Sewer System Assessment Program (CSSAP) and is used to feed the Infrastructure Rehabilitation Program (IRP) decision-making process. We refer to this as our basin characterization process. As all the data is collected for a sub-basin or mini-basin, a design engineer and a basin engineer evaluate it. Mains are then recommended for rehabilitation, replacement, or continued maintenance and inspection based on design criteria and engineering judgment.

Through the collection of multiple sources of data, such as as-built drawings, field inspections, and asset management information, KUB created a database to help manage the continual evaluation of each sewer pump station and the connected force mains. The database tracks general information about each pump station and actual operational data, such as flow rate and other information from the Supervisory Control and Data Acquisition system (SCADA).

KUB uses the database as the primary tool to assess station condition and ensure that the pump stations are a reliable means of transporting sewage during dry- and wet-weather conditions.

Infrastructure Rehabilitation Program (IRP)

In 2011, KUB spent \$42.4 million in rehabilitation and replacement projects, including two additional storage tanks, four pump stations, approximately 25 miles of pipe in the collection system, and 377 manholes rehabilitated or replaced. KUB completed 31 projects in 2011 and started 10 additional projects that are currently in construction.

Private Lateral Program

KUB also inspects customer-owned private laterals, notifies customers of defective laterals or prohibited connections discovered, and enforces repairs or replacements as required by our Private Lateral Program (PLP). KUB tracks information about the PLP in a Lotus Notes information management system (IMS) called the Private Lateral Tracker. A total of 524 laterals were repaired or replaced in 2011 under the PLP.

As part of the PLP, KUB operates a Supplemental Environmental Project* (SEP), which offers financial assistance to low-income homeowners who have defective sewer laterals or prohibited connections. KUB was required by the Consent Decree to set aside \$2 million in grant funds to operate the SEP*, which is expected to be complete in 2012.

Summary

KUB continues to complete numerous improvement projects and maintain the ongoing MOM programs to further reduce wet and dry weather related overflows. This progress report shows how KUB will continue to use and refine its MOM programs in the future to better maintain our system, serve our customers, and protect our environment. The following sections provide more specific information on the MOM activities already highlighted over the course of this past year.

KUB continues to implement, manage, and refine the Other MOM Programs listed in the Consent Decree Appendix A. Where applicable, any of those programs with changes or significant accomplishments are summarized in Section 7.

**This project was undertaken in conjunction with the settlement of a civil enforcement action taken by the United States for violations of the Clean Water Act.*

Section 2: Grease Control Program

KUB's Grease Control Program consists of three primary elements:

- Routine inspection of food service facilities (FSFs)
 - Existing FSFs
 - New/remodeled FSFs
- Grease-related SSO Response
- Residential Grease Control Program.

This MOM Progress Report section and the summary tables included in Appendix A provide an overview of the program's activities in 2011. There were only 21 grease related SSOs in 2011 as a result of the continued focus on Grease Control Program activities. The summary tables provide more detailed information pertaining to grease-related SSOs, interceptor requirements for FSFs, the number and results of inspections, enforcement actions, and other program activities. All FSFs in the KUB service area are on a scheduled rotation for inspection at least annually.

Inspections of Food Service Facilities

KUB conducted 1,328 total inspections of FSFs in 2011. That included 87 initial inspections, 247 follow-up inspections, and 994 annual inspections. KUB required 48 of the FSFs to upgrade existing equipment or to install new equipment to help prevent grease-related overflows in their areas.

The 1,328 inspections performed in 2011 resulted in only 50 Notices of Noncompliance, six Notices of Violation, and one Notice of Significant Noncompliance. Over 93 percent of the FSFs inspected were in compliance with the Grease Control Program requirements. Of the 50 enforcement actions, three resulted in new installations or upgrades to existing grease control equipment.

Several FSFs also proactively upgraded equipment during building renovations or expansions. Some facilities recognized their grease control equipment needed repair or replacement. Osaka Hibachi and Sushi installed a 1,500-gallon grease interceptor, upgrading from a 1,000 gallon external grease interceptor. City View Baptist Church installed a 1,000-gallon grease interceptor, upgrading the previous 50 pound internal grease trap that had developed a crack in the side. Cheddars Restaurant installed a 3,000 gallon grease interceptor, exceeding the size requirement of a 2,000 gallon grease interceptor.

Grease Program Permitting Phase for 2011

In June 2011, KUB sent 780 Grease Permitting packets to FSFs that discharge into the wastewater system. The program requires all active and inactive FSFs to be inspected at least annually and to obtain a Grease Control Permit every two years if they prepare food.

Each FSF received a permitting packet that explained the facility's risk rating and included application materials and program guidelines. KUB completed inspections of all FSFs in its service area to determine risk ratings and if the FSF needed a permit. Completed permits were received from 743 FSFs, and 37 FSFs were verified as inactive or did not need a permit.

Before permit packets are mailed, FSFs are inspected to determine their risk rating, based on the risk they potentially pose to the collection system. Each facility is rated based on its size, food preparation practices, the maintenance of its grease control equipment, and its record-keeping practices. If an FSF's equipment is undersized or poorly maintained, or if the FSF has not maintained pumping records, the risk rating will be high or unacceptable. If the facility is rated as unacceptable, it will be required to upgrade its grease-control equipment or increase pumping frequency. Otherwise, it will be subject to enforcement action.

The base permit fee is \$100 per year for each facility. If an FSF's grease control system is rated as unacceptable or high risk to KUB's system, KUB charges the facility an additional \$50 fee. Each facility is assessed annually to determine the risk rating and proper fee. Permitting fees help KUB recover some of the costs related to implementing the Grease Control Program. Only 4 percent of the FSFs were rated as high risk or unacceptable for the 2012 permitting year.

Beginning with the 2011 permitting cycle, permits are valid for two years, but all FSFs will still be inspected annually to ensure compliance and determine their risk rating. Also in 2011, the use of additives in grease control equipment or building discharge lines on either an intermittent or regular basis was prohibited. Such additives include, but are not limited to, chemicals, acids, caustics, enzymes, emulsifiers, surfactants, commercially available bacteria, or other additives designed to absorb, purge, consume, treat, or otherwise eliminate fats, oil, and grease. Written approval from KUB may be given where specific circumstances exist and grease control is demonstrated by televised inspection of the lines downstream. The banning of additives will eliminate the potential for dissolved grease to enter the collection system and cause future grease related SSOs.

A new addition to the Grease Control Program in 2011 was the implementation of an Annual Grease Control Equipment Certification program. This program requires FSFs to have their grease control equipment – internal traps and external interceptors – inspected and certified annually to ensure all components are installed and functioning properly. In most cases, the certifications are completed by plumbers or waste haulers who attended and passed a Grease Control Equipment Certification course. KUB has agreed to conduct the certifications of small internal traps during regular inspections at FSFs who don't currently contract with a hauler in an effort to reduce costs for small businesses.

By working together with the haulers, KUB can better ensure all components of the grease control equipment are installed and functioning properly. If any defects or deficiencies are found during the inspection, FSFs must submit information to KUB detailing the issues that were found, including a corrective action plan. Haulers wanting to conduct the certifications were asked to sign an Approved Waste Hauler Agreement with KUB to follow the requirements of certification and provide proof of proper grease disposal. In return, those haulers are recognized as a KUB Approved Grease Waste Hauler and are included on the list of Approved Grease Waste Haulers sent to FSFs.

The requirements of the agreement are as follows:

- Hauler will pump all contents completely
- Hauler will provide a manifest or record of cleaning to FSF
- Hauler will provide written documentation to FSF of any defects or problems found during the certification

- Hauler will provide a monthly report to KUB detailing all FSFs that were serviced and the disposal location
- Hauler agrees to allow KUB, within seven days notice, to conduct an audit of pumping records and final disposal location records
- Hauler will retain all grease pumping records for at least three years.

As of the end of 2011, certification forms were received from 144 facilities and resulted in the discovery of 53 issues with installation or structural failure of the equipment. Six of those facilities have already completed repairs, and compliance schedules have been established for the other 47 for repair or replacement.

Grease-Related SSO Response and Residential Can the Grease Program

The majority of grease-related overflows in the KUB system occur in residential areas. When such an overflow occurs, KUB initiates a grease investigation that includes making field inspections and sending information to residential customers.

Based on the location of the SSO, KUB uses the electronic mapping tool Geographic Information System (GIS) to place a graphic polygon around the geographic area upstream of the SSO location. That helps identify all wastewater customers that may be contributing grease to the SSO location. KUB then generates a report containing customers' names and account information.

KUB inspects commercial customers to verify their compliance with KUB's Grease Control Program requirements. KUB mails residential customers a letter, an educational brochure, and other promotional materials on collecting their grease instead of disposing of it down the drain.

In 2011, KUB mailed grease letters to 2,200 customers near 21 grease-related overflows. Of these letters, 97 percent went to residential customers and 3 percent were to commercial customers. More than half of the commercial customers were non-food producing facilities. KUB also sent educational brochures, CTG spatulas, and grease can liners to residential customers. [Note: KUB does not send educational materials to commercial customers, which must have grease traps or interceptors. All commercial customers near grease related SSOs are inspected to ensure compliance with the program.]



KUB also emphasized communication to residential customers in 2011 with information on the Can the Grease (CTG) program to promote customer education and awareness of proper disposal of grease in their homes. Information is always included on the KUB website. During the winter holiday season, it is included on the home page. Residential

homeowners also receive educational information through customer newsletters and even promotions of the CTG program in the local newspaper.

In 2011, a nonprofit recycling company in the Knoxville area called Down to Earth Energy (DTE) [previously called Clean Energy Biofuels] set up collection sites in the Knoxville area to collect used cooking oil, which was then processed into cleaner burning biodiesel. Over 850 gallons of used cooking oil was collected in 2011. KUB has partnered with DTE to help sponsor more permanent collection sites to continue the effort of collecting used cooking oil.

KUB continues to promote the CTG program at community events by distributing cans and sending speakers to meetings and other events. KUB grease inspectors gave educational presentations at apartment complexes during monthly tenant meetings, housing agencies, and general utility customer education workshops. KUB participated in 17 local events in 2011 and handed out 653 Can the Grease cans and brochures.

Section 3: Continuing Sewer System Assessment Program (CSSAP)

The CSSAP is a systematic evaluation of the entire wastewater collection and transmission system (WCTS) that also assesses capacity to support prioritization of the Corrective Action Plan/Engineering Report (CAP/ER) and the Infrastructure Rehabilitation Program (IRP). It consists of five key programs, each of which includes a method for setting priorities for determining where assessments are to be performed, a list of the tools and methods to be used to conduct assessments, and a performance measure to track progress.

The following table shows the elements of the CSSAP assessment tools and performance goal periods:

Table 3. CSSAP Elements

Program Elements	Assessment Tools	Completed in 2011	Total Completed*	One Complete Cycle Period
Manhole Condition Assessment	Manhole Inspections Smoke Testing	12 percent	70 percent	12 Years
Gravity Sewer Condition Assessment	Flow Monitoring Smoke Testing Dye Testing CCTV	12 percent	73 percent	12 Years
Private Lateral Condition Assessment	Flow Monitoring Smoke Testing Dye Testing CCTV	14 percent	78 percent	12 Years
Force Main Performance Assessment	Corrosion Defect Identification	100 percent	100 percent**	2 Years New cycle begins in 2013
Pump Station Performance Assessment	Pump Station Performance and Adequacy	50 percent	100 percent**	2 Years New cycle begins in 2012

*Since CSSAP approval 7-28-05

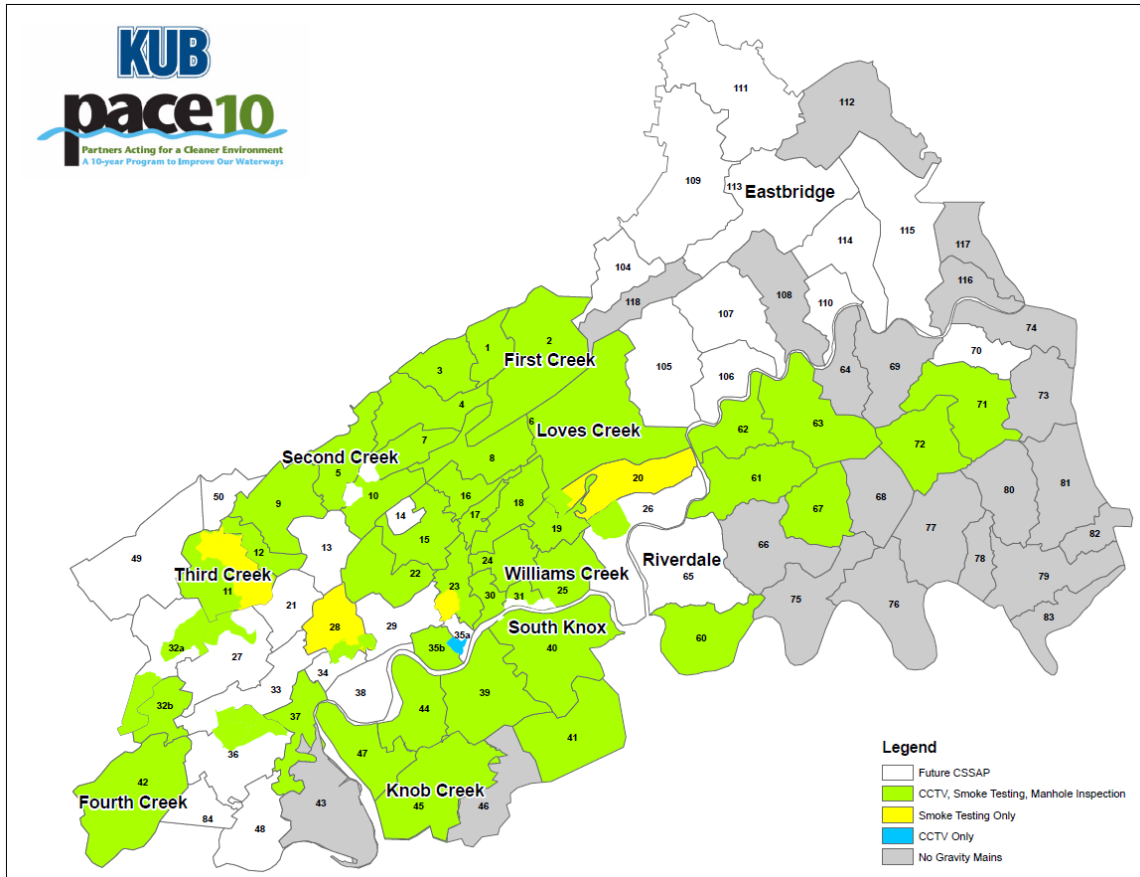
**Completed once every two years

Manhole and Gravity Sewer Condition Assessment

We are dedicated to completing one full cycle of collection system assessment and cleaning in 12 years. At the end of year seven, KUB has completed inspection of approximately 73 percent of the collection system infrastructure. This advancement of work was done to facilitate many of the early rehabilitation projects. On the remaining schedule, KUB's daily clean and CCTV goal is 2,500 ft per day for an assumed 200 working days/year (200 days provides allowance for weather, emergency response,

equipment, training, and other personnel constraints that may limit a working day). This amounts to 500,000 ft per year, or approximately 8.5 percent of the system.

In addition to the 181 miles of BA footage, KUB and PACE 10 contractors cleaned and televised 791,861 ft (150 miles) of gravity sewers in 2011. Under PACE 10, contractors smoke-tested 791,861 ft (150 miles) of sewers and conducted 4,024 manhole inspections, with 377 manholes rehabilitated or replaced. Approximately 132,000 ft (25 miles) of wastewater mains in the KUB system were rehabilitated or replaced.



We continue to reconcile data from previous years to ensure thorough cleaning and inspections on all assets in each sub-basin.

Flow Monitoring and Modeling

Flow monitoring and modeling continue to be important tools to help KUB assess its system and prioritize basins for cleaning and rehabilitation. KUB has 35 permanent flow meters strategically placed in the wastewater system.

KUB plans to continue to use permanent meters and to add temporary meters as needed to collect data for the system model to help determine what areas to investigate and prioritize for future projects. Flow monitoring data supports planning for Gravity Line Preventive Maintenance, Pump Station and Force Main Preventive Maintenance, and Infrastructure Rehabilitation.

As a part of the temporary flow monitoring process, R-values are developed for each flow monitored area, or mini-basin. R-values are defined as the ratio of the volume of rainfall dependent inflow and infiltration in the collection system to the total rainfall volume of a storm event. KUB uses R-values to assess how much storm water is entering the wastewater collection system. R-value is expressed as a percentage of rainfall from a storm event that enters the wastewater collection system via inflow or infiltration. The higher the R-value, the higher the percentage of passing rainfall that may enter the collection system.

KUB has completed and used flow monitoring data in various basins to direct project work thus far. KUB conducted temporary flow monitoring in the Third Creek drainage basin from late January 2008 through March 2008. As part of that study, 43 temporary flow monitors and 16 temporary rain gauges were used in conjunction with six permanent flow monitors and one permanent rain gauge to analyze the Third Creek drainage basin. From this analysis, general improvements were noted in 30 out of 50 mini-basins. R-values and flow monitoring notations developed from the analysis led to recommendations for follow-up investigations in eight mini-basin areas.

KUB conducted temporary flow monitoring assessments of both the First Creek and Williams Creek drainage basins in 2009 to gauge improvements after completing significant amounts of sewer rehabilitation in the basins. KUB contractors installed 42 temporary flow monitors and 15 temporary rain gauges in First Creek. Also, nine temporary flow monitors and nine temporary rain gauges were placed in the Williams Creek drainage basin. In addition, KUB contractors used nine additional permanent flow monitors to help analyze the two basins. Data was collected from February 2009 through April 2009.

The flow monitoring conducted in 2009 showed potential improvements had been made in both the First Creek and Williams Creek drainage basins. Flow monitoring data revealed improvements of R-value in 27 out of the 51 mini-basins in First Creek, and five out of the ten mini-basins in Williams Creek, when compared to R-values prior to drainage basin improvements. Out of the same analysis came guidance for further follow-up investigations in 13 mini-basins in First Creek and two mini-basins in Williams Creek.

In 2010, the South Knoxville and Knob Creek drainage basins were monitored by 33 temporary flow monitors, five permanent flow monitors, 11 temporary rain gauges, and two permanent rain gauges. This monitoring was prompted after substantial rehabilitation work had been completed in the drainage basins in prior years. In addition to the areas of South Knoxville and Knob Creek, KUB conducted a temporary flow assessment in the Shadyland area of the Fourth Creek drainage basin by using one temporary flow monitor and one rain gauge. Data was collected from February 2010 to April 2010. Results from the flow monitoring showed improvements in a majority of the mini-basins in South Knoxville with recommendations for further investigative work to be performed in three mini-basins.

In 2011, the Fourth Creek drainage basin was monitored by 39 temporary flow monitors, five permanent flow monitors, 11 temporary rain gauges, and two permanent rain gauges. Data was collected from February 2011 to mid-April 2011. The final report for the 2011 study was not ready at the time of this annual report update.

Private Lateral Condition Assessment

Private laterals may also be a major source of rainfall-derived inflow/infiltration (RD I/I). Through 2011, private lateral inspections followed PACE 10 wastewater system improvement projects. As part of the PACE 10 projects, KUB replaces the lower lateral and installs a two-way cleanout.

KUB has the ability to televise customers' upper laterals through the new cleanout and score them using standard Pipeline Assessment and Certification Program (PACP) criteria. When inspections occur, KUB reviews the data and makes recommendations on repairs. The recommendations are reviewed for consistency with PACP standards and enforcement action is taken where appropriate.

For more information on the Private Lateral Program (PLP), see Section 8.

Force Main and Pump Station Performance Assessment

As shown in the CSSAP table at the beginning of this section, KUB is committed to assessing all force mains and pump stations on a two-year cycle. All 63 pump stations received a separate comprehensive condition assessment through a detailed inspection over the last two years. During inspections, the estimated remaining service life of the structural integrity, mechanical equipment, and electrical reliability at each pump station was reviewed and updated from inspections performed in 2011. Information from those inspections helps assess the condition and criticality grading of each facility every other year. Based on the results of the 2011 assessment, KUB prioritized pump stations to determine criticality and a course of action for each station in need of maintenance. The prioritized list of stations guides the timeline for project completion.

The wastewater facility preventive/predictive maintenance program has been streamlined to eliminate excess work and consolidate inspection methods into one practical application. KUB System Operations personnel have completed inspections of all pump stations annually since 2008. In 2011, KUB performed 1,000 inspections of pump stations or equipment. That included 969 routinely scheduled preventive maintenance inspections and 31 additional inspections initiated by field crews. [See Appendix B for maintenance activities and schedule.]

In 2011, KUB completed a force main assessment in conjunction with the pump station assessment. The assessment included inspections of all high-pressure air-relief valves. The force main assessment evaluates the material and age of the main, the condition of the air-relief valve, the condition of terminal manholes, and problems at pump stations (pumps not pumping at their specified rating or under high pressure due to potential issues with the force main). KUB also monitors Hydrogen Sulfide (H₂S) on a continuous basis and tracks odor problems, which potentially affect the condition of the force main. In 2011, KUB began a project to replace 37 air release valves based on the results of the 2011 assessment. Of these 37 air release valves, 27 are located on high pressure

force mains and ten located on low pressure force mains. Based on terminal manhole inspections, 15 will be rehabilitated or replaced in 2012.

KUB's Force Main Condition Assessment Program identifies areas having potential corrosion issues. Staff uses the information to schedule appropriate maintenance and/or capital improvement activities. [See *Section 7: Other MOM Programs for more information.*] Because steel, cast iron, and ductile iron pipe are susceptible to corrosion damage in areas where air enters pipes, KUB focuses assessment efforts around air-relief valves and at terminal manholes.

KUB uses temporary dataloggers (OdaLogs) to monitor H₂S levels in areas with odor complaints or previous corrosion issues. The data helps to identify potential for force main corrosion. KUB follows up with additional inspections on lines shown to have high H₂S levels for extended periods.

KUB monitored the following pump station (PS) areas in the past year:

Easton Meadows PS / Parker Drive FM	Kohl's PS / Washington Pike FM
Forks of the River PS / Delrose Dr FM	Ten Mile PS / Rotherwood Drive FM
Harrison Keepe PS wet well	Walker Springs PS / Vanosdale Road FM

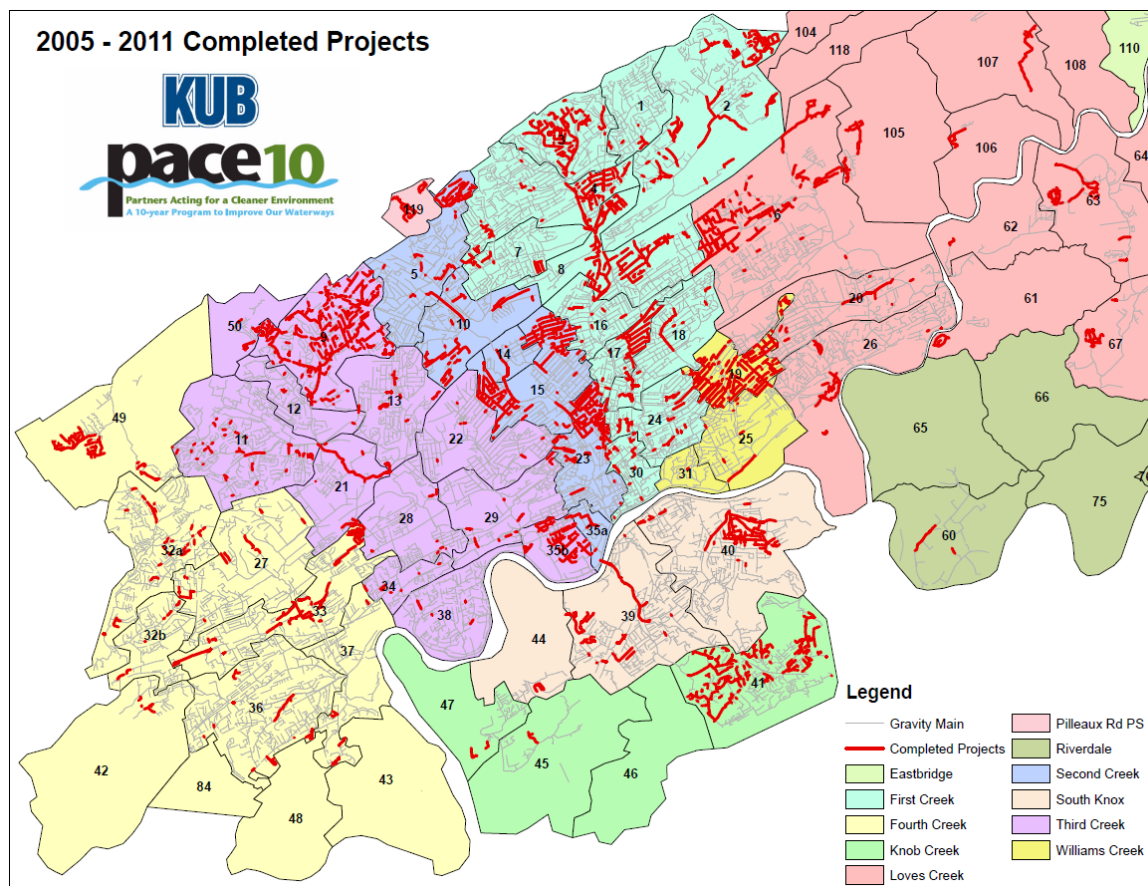
Manholes and lines downstream of force mains are areas that may experience odor complaints. KUB concentrates H₂S monitoring and control efforts in areas such as these and uses various methods of odor control as appropriate.

Section 4: Infrastructure Rehabilitation Program (IRP)

The main objectives of the Infrastructure Rehabilitation Program (IRP) are to address inflow and infiltration (I/I) and other causes of sanitary sewer overflows (SSOs) by maintaining or restoring capacity and structural integrity. It addresses both the gravity portion of the WCTS (gravity lines, manholes, etc.) and the transmission components (pump stations and force mains).

Gravity Lines and Manholes

KUB's IRP rehabilitated or replaced more than 132,000 ft (25 miles) of sewer mains in 2011, about 1.9 percent of the KUB system. Out of 4,024 manholes inspected, 377 were rehabilitated or replaced. The mains were rehabilitated or replaced using a mix of cured-in-place pipe, pipe bursting, or open-cut pipe replacement.



KUB initially focused heavily on flow monitoring and modeling to direct rehabilitation. As the IRP matures, KUB increasingly uses other components of the CSSAP, such as televising lines and inspecting pump stations, to direct improvements. Basin Characterization has become a larger part of the evaluation as a more comprehensive set of data becomes available from CSSAP.

Pump Stations and Force Mains

Key performance criteria for pump stations and force mains are hydraulic capacity, structural integrity, and mechanical and electrical reliability. KUB's ultimate goal is to upgrade pump stations as necessary to maintain the design life of equipment and to certify capacity for new connections in accordance with the requirements of the Capacity Assurance Plan (CAP).

In 2011, construction was completed to add the Lake Forest pump station to the system. This new station replaced gravity sewer lines that ran along and/or under a pond that were subject to high levels of inflow and infiltration.

KUB completed upgrades or replacements of the Queensbury, Hanover, John Sevier, and Meadow Oaks pump stations in 2011. Design and/or construction on Chapman Highway, Neubert Springs, Duncan's Glen, Pelham, Pilleaux, Southside, Amherst, and Cruze Road pump station upgrades (facility replacements with new submersible design) are currently in process.

Other 2011 facility and equipment work included installation of an odor control chemical feed system at Kohl's and Easton Meadows pump stations. Pumps were replaced at Ball Road and Queensbury pump stations. Improvements also include the SCADA upgrades and improvements at various facilities.

KUB continues to monitor all wastewater facilities (pump station and storage facilities) with SCADA capabilities at the System Operations Center located at Middlebrook Pike. This is the primary notification and monitoring location for all pump station, storage facility, and metering facility conditions.

Section 5: Gravity Line Preventive Maintenance Program

The Gravity Line Preventive Maintenance Program (GLPMP) describes KUB's process for preventive cleaning of the wastewater system to improve operation, efficiency, and effectiveness. KUB is committed to cleaning the entire wastewater collection system in 12 years.

The GLPMP is divided into the Comprehensive Hydraulic Cleaning Program (CHCP) and Blockage Abatement (BA). Root Control and Manhole Preventive Maintenance are components of both the BA and the CHCP. KUB determines chemical and mechanical root abatement frequency by the condition assessment program.

The Comprehensive Hydraulic Cleaning Program (CHCP)

The CHCP is a systematic, planned cleaning of the system to reduce debris and grease buildup and root intrusion. It is based on preventing and reducing the initial occurrence of system disruptions and maintaining the original hydraulic capacity of the collection system. It also provides support to the CSSAP by removing any obstruction in the system that would prevent a comprehensive inspection.

KUB and PACE 10 contractors cleaned and televised 791,861 ft (150 miles) of KUB sewers in 2011.

The Blockage Abatement (BA) Program

BA is a preventive maintenance approach for addressing operational issues. It uses previous event history and condition assessment information to implement activities that prevent or reduce system disruptions. Activities may include, but are not limited to, hydraulic flushing, mechanical and chemical root control, rodding, and CCTV inspections.

BA contract crews cleaned 954,727 ft (181 miles) and televised 348,590 ft (66 miles) of sewers in 2011. KUB had approximately 630,000 ft (119 miles), or 10 percent of its sewer mains, in the BA program in 2011.

KUB adds a line segment to the BA Program based on inspection data or when a blockage or other failure occurs. Each line segment included in the BA Program is assigned a cleaning frequency according to its condition and the probability or risk of failure. The frequency of the maintenance activity ranges from one month to 42 months.

During calendar year 2011, KUB continued to perform root control using mechanical root cutting and cleaning under the BA Program.

Section 6: Sewer Overflow Response Plan (SORP)

As reported in the most recent SORP [revised and re-submitted to the EPA June 27, 2005, and approved July 28, 2005], KUB continues to place a high priority on maintaining and executing a Sewer Overflow Response Plan to help protect our community and our environment. KUB's Emergency Response Plan (ERP), which was approved by EPA on December 12, 2005, dovetails with the SORP. The ERP helps define the level of response that we take for everything from a single, isolated event to system-wide overflows.

KUB reviews the SORP annually. This progress report includes an update on implementation of recent revisions, training, and other areas of interest.

KUB makes all reasonable efforts [without endangering the safety of the responder or the public] to respond to an SSO within 45 minutes. In 2011, our average response time was 42 minutes. This number slightly increased from 2010 due to the events mentioned previously in the Introduction. From February to April 2011, KUB responded to 93 SSOs. Many of those occurred during periods of heavy rain. Since there were multiple calls reported at essentially the same times, it was difficult to meet the 45 minute goal, thus skewing the annual average. We continue to work to improve our response, using technology such as remote overflow sensors that alert our system operators to an overflow condition, prompting immediate dispatch of a First Responder. We are also using mobile mapping technology, which helps our responder quickly identify the geographic location of the overflow and plan the best route. Other factors that influence response time include safety considerations, location of the problem, severity of events, and workloads at the time of the call. We will continue to assess each of those factors to determine if changes need to be made to improve response time. Starting February 2, 2009, KUB consolidated all of the First Responders into a team of trained individuals covering all shifts that will respond to all gas, water, and wastewater trouble calls.

KUB relies on several measures to help maintain an appropriate quality of SSO response:

- Members of the CSI team, who are knowledgeable in SORP requirements, perform periodic quality assurance audits to evaluate how effectively the crew implemented the SORP. They look at a variety of factors, including containment measures, control zone and signs, and cleaning, and they check that crews followed the disinfection procedure. CSI works closely with crews and supervisors to maintain appropriate standards.
- Underground Construction supervisors monitor crews' work on a day-to-day basis. They also use tailgate meetings in the field, coaching opportunities, and regular meetings to emphasize safety and maintaining proper standards. Compliance with established procedures is part of KUB's Performance Management Program measures so feedback can be provided to employees in case improvement is needed.
- Feedback from customers, concerned citizens, neighborhood associations, City personnel, and organizations (such as the Izaak Walton League or Tennessee Clean Water Network) also helps identify any instances when the quality of response falters. Such feedback is directed to CSI, who works with UGC to correct the issue in that instance and prevent it from recurring in future responses.

SORP Training: In addition to working closely with all departments involved in the SORP on a day-to-day, event-by-event basis, CSI updates appropriate personnel as needed on revisions. In addition, KUB uses a computerized SORP training tool that allows employees to train at their own pace on a computer. The computerized training is available on demand for new employees or others who need refresher training. Targeted employees receive notification when training is required.

Manhole Surcharge Sensors: As previously reported, KUB added a tool in 2005 to help alert responders when wet-weather overflows are imminent (manhole surcharge level sensors). When the level in manholes with a sensor reaches a set point, the sensor sends a page over a cellular system. The page notifies the KUB Operations Center, which dispatches a First Responder and sends an e-mail alert to CSI. The sensor also sends a second page when the manhole level is back below the set point. KUB continues to use the sensors [currently 18], as needed, to automate coverage of the monitored locations formerly on the list for wet-weather surveys, freeing up crews for other duties.

KUB website (www.kub.org): The SSO log includes a volume category added in 2005 and a link to a permanent archive of SSOs by month. In 2007, KUB and a contractor conducted focus groups with customers to help direct a site redesign. The new site went live during 2008 and is providing customers more interaction with their utility services. The SSO information is still available on the new site. To access the SSO log, enter www.kub.org/wps/portal/ssolog into your browser.

Section 7: Other MOM Programs

KUB continues to implement and manage the Other MOM Programs in substantially the same manner as previously reported. The following is a brief update on some areas of particular interest or those where there have been changes:

- Pump Station Preventive Maintenance Program
KUB's Pump Station Preventive Maintenance Program includes both routinely scheduled maintenance and work orders field crews create. [*Orders created by crews are designated RSCIN in the spreadsheet in Appendix B.*] A crew at a pump station for a scheduled pump inspection, for example, may also decide to inspect another piece of equipment or perform a routine facility inspection.

In 2011, crews conducted 1,000 total inspections of stations or equipment; 31 of those were routine inspections; 969 were scheduled facility inspections. KUB also uses the rate of trouble occurrences to adjust inspection frequencies. If a pump at one station generates a number of trouble calls, crews may inspect it more frequently.

For more detail on the numbers and types of inspections see Appendix B. The appendix also includes sample checklists for some of the inspection categories.

- Force Main Preventive Maintenance Program
Force mains are a critical part of the sewer infrastructure and operations. Force main and air/vacuum valve maintenance and operation have a direct impact on the hydraulic performance of wastewater pump stations. The vertical alignment of force main slopes, the location of air/vacuum valves, and the age of sewage transmitted by the force main may also result in odor sources, corrosion problems, and even pipe failure.

Like pump stations, the force mains are evaluated based on both criticality (consequence of failure) and condition (probability of failure). Since it can be cost prohibitive to inspect the pipe of each force main in KUB's system, surrogate condition factors were used with the available existing information to estimate the condition of each asset. The force mains are analyzed and categorized in terms of field measurements and existing data collection in terms of: Quantity of Flow Conveyed, Transportation Impacts, Urban Impacts, Environmental Impacts, Public Health Impacts, Age, Material, Air Release Valve Information, Discharge Manhole Condition, and SSOs. Combining those factors accordingly, the existing force mains can be viewed in terms of the consequences and probability of their failure, which helps dictate the necessity of replacement and/or rehabilitation.

In 2011, the force mains for the Sea Ray, Meadow Oaks, and Hanover pump stations were replaced. In 2012, force mains for Amherst, Southside, Neubert Springs, Chapman Highway, and Pelham Road pump stations will be replaced.

- Public Information/Public Input Plan
KUB continues to concentrate on educating customers about the wastewater system, sewer overflows, impacts on area waterways, private lateral maintenance, and how they can help protect their plumbing and our environment. We use a variety of communication methods including our website, customer bill messages, our customer newsletter, brochures, presentations, and articles or ads in local papers.

KUB's Customer Information Guide includes information about wastewater safety, private laterals, and prohibited connections. The guide mails to about 1,500 customers each month who are either new to KUB or who move to a new address. We also include similar information in our *Connection* newsletter, which mails in all customer bills (approximately 208,000 bills per month) six times a year.

We continue to meet regularly with the Partners Council, which was established in December 2004 to enhance KUB's PACE 10 program by increasing awareness and building consensus in our community. The council members both provide feedback and input to KUB and take information back to the groups they represent. They receive a written monthly update on current PACE 10 projects, construction communications, Can the Grease mailings, overflow numbers, and rainfall data. Every other month, the council meets for a presentation and more in-depth discussion of ongoing projects and trends in overflows.

KUB also offers speakers to neighborhood groups and organizations about PACE 10 projects, private laterals, prohibited connections, and other wastewater-related topics. Groups may request presentations through our website or by calling our Customer Information Center at 865-524-2911.

We continue to mail letters to customers in advance of PACE 10 projects with information about the need for the project, smoke testing information, and more. In 2011, we sent approximately 19,700 construction letters.

We also increased the wastewater safety and CTG information in our Utility Safety Program, which provides presentations to public and private schools and organizations such as the Boy's and Girl's Clubs in KUB's service area. KUB presented the USP to approximately 1,100 students in 20 schools or organizations in 2011.

The KUB website home page changes periodically to include seasonal topics, new functionality, and special promotions. To ensure that customers can easily find topics that have been on the home page, we also developed a Hot Topics Index that includes things that have been on the front page. Wastewater-related topics in the index include Can the Grease, PACE 10, the Private Lateral Program, Smoke Testing, and Sewer Overflows.

Section 8: Private Lateral Program

KUB operates a Private Lateral Program (PLP), as required by the Consent Decree and KUB's Wastewater Rules and Regulations. The PLP helps protect our environment by ensuring that property owners repair their laterals and/or remove prohibited connections. [Prohibited connections include roof downspouts and other sources of stormwater.] Defective laterals or prohibited connections can overload KUB's sewer system with rainwater and contribute to sewer overflows. Leaking laterals can also add to pollution in area waterways.

KUB takes these steps as part of the PLP:

- Inspect customers' private laterals and identify defects or prohibited connections.
- Inform property owners of any defects, the process to follow to make repairs, and potential availability of financial aid.
- Ensure owners make lateral repairs or remove prohibited stormwater connections.
- Enforce the PLP by terminating the water service of customers who do not make repairs within the 120-day timeframe.

The statistics below illustrate actions undertaken in the program from January 1, 2011, to December 31, 2011.

Total Private Laterals	526
Repair	69
Replace	457
Total with Tenants	180
 Repair/Replace Complete	524
Terminations	15
Reinstatements	11
 Financial Assistance Activity	
Applications provided to customers	170
Applications received	178
Grants approved	192
Loans approved	0
Grants disbursed	\$626,278.25
Loans disbursed	\$0.00

Note: Some applications received or approved were provided to customers in 2010.

KUB continues to explore methods to identify defective private laterals and increase opportunities for property owners to take advantage of financial assistance. The income guideline percentages for both the Grant* and Loan programs are calculated based on current homeowner income information obtained from the Department of Housing and Urban Development for Knoxville/Knox County. KUB anticipates the completion of the Supplemental Environmental Project* (SEP) in 2012.

In 2010, KUB implemented an Incentive Program to help property owners proactively replace their defective sewer laterals and remove prohibited connections if they qualified for assistance under the SEP*. KUB offered this program to property owners in areas

where sewer main rehabilitation had not occurred and would not occur before the expected completion date of the SEP. The areas were also determined to have significant inflow or infiltration during heavy rainfall and older sewer pipe (system age is greater than 40 years) consisting of a large amount of concrete, clay, cast iron, or Orangeburg pipe. A total of 2,915 customers in five separate areas received incentive letters in 2010, which resulted in a total of 241 grants (or repaired laterals) in 2010 and 2011.

KUB established the problem on property (POP) process in late 2007 to handle private wastewater problem calls. This process assists customers with identifying sources and locations of sewer problems via CCTV inspections, either by push cameras through cleanouts or launch cameras entering laterals from sewer mains. Properties are placed in the PLP if defects are discovered in the private lateral during these inspections. Quick response to POP situations, which typically includes sewage on the ground, helps the environment by preventing wastewater from reaching ground water or being carried by storm water to area waterways, which add to stream pollution.

In addition to the POP process and ongoing CAP/ER work addressing laterals, KUB continues to require homeowners to disconnect illicit connections, such as roof downspouts, area or foundation drains, and sump pumps, in an effort to reduce excess rainwater from entering the sanitary sewer system and thus causing SSOs.

KUB also uses the website and professional group presentations to educate property owners about the importance of properly maintaining sewer laterals and removing prohibited connections.

**This project was undertaken in conjunction with the settlement of a civil enforcement action taken by the United States for violations of the Clean Water Act.*

Appendices

Appendix A

Grease Control Program Summary Tables

FSF Name	Inactive FSFs	Trap/Interceptor Size	Trap Size Required	Interceptor Size Required	Total Inspections	Initial Inspections	Follow up Inspections	Trap Inspections	Risk Rating	NONC Notice	NOV Letters	SNC Letters	Traps Installed	Comments
11TH Street Espresso House	X	30	30		1			1	Category 4 - Low					No food production at facility.
31 Bistro		40	40		1			1	Catagory 3 - Medium					
180 Sports & Fitness/ Moes Snack Bar	X	*-	*-		1			1	Category 4 - Low					Business is closed.
4620 Revisited	X	30	30		1			1	Category 4 - Low					Business is closed.
501 Arthur Street Market & Deli	X	50	50		2			2	Category 4 - Low					Business is closed.
A.J.'s Restaurant	X	*-	*-		1			1	Category 4 - Low					Business is closed.
A.J.'s Sports Bar & Grill	X	30	30		1			1	Category 4 - Low					Business is closed.
A Taste of Miami	X	30	30		2	1	1		Category 4 - Low					New FSF. Business is closed.
A & K Barbeque	X	20	20		1			1	Category 4 - Low					Business is closed.
ABC Kiddies Academy		*-	*-		1			1	Category 4 - Low					No food production at facility.
Aegean Mediterranean Restaurant		1000		1000	1	1			Category 3 - Medium					New FSF.
Agave Azul Mexican Grill		1000		1000	1			1	Catagory 3 - Medium					
Ale House		*-	40		2		1	1	Category 1 - Unacceptable					**FSF is in enforcement.
Alex's Havana Café	X	40	40		1			1	Category 4 - Low					Business is closed.
Ali Baba's Time Out Delicatessen		30	30		1			1	Catagory 3 - Medium					
All Occasion Catering (922 N. Central)		1500		1500	1			1	Catagory 3 - Medium					
All Occasion Party Rentals	X	1000		1000	1			1	Category 4 - Low					No food production at facility.
Al's Market & Deli (2900 Sevier Ave.)		40	40		1			1	Catagory 3 - Medium					
Al's Market & Deli (1006 University)	X	20	20		2	1	1		Catagory 4 - Low					New FSF. No food production at facility.
Amber Restaurant #2	X	30, 30		1000	1			1	Category 4 - Low					Business is closed. Building razed.
American Fresh	X	30	30		1			1	Category 4 - Low					Business is closed.
Amvets	X	*-	*-		1			1	Category 4 - Low					No food production at facility.
Anna's Market & Deli		40	40		1			1	Category 3 - Medium					
Annus Market & Deli		40	40		1			1	Category 4 - Low					
Apostolic Kiddie Academy		500			1			1	Catagory 3 - Medium					
Applebee's (Knox Center)		1000		1000	1			1	Catagory 3 - Medium					
Applebee's Restaurant (Kingston Pike)		1000		1000	1			1	Catagory 3 - Medium					
Applebee's Restaurant #1(Central Avenue Pike)		1000		1000	1			1	Catagory 3 - Medium					
Arby's #1498 (4849 N. Broadway)		30	30		1			1	Catagory 3 - Medium					
Arby's (2750 Schaad Road)		1000		1000	1			1	Catagory 3 - Medium					
Arby's Roast Beef #6770 (7122 Strawberry Plains)		40	40		1			1	Catagory 3 - Medium					
Arby's Roast Beef #1497 (2657 Magnolia Ave.)		30	30		1			1	Catagory 3 - Medium					
Arby's Roast Beef #567(2819 Chapman)		40	40		1			1	Catagory 3 - Medium					
Arby's Roast Beef #618 (5228 Clinton)		40	40		1			1	Catagory 3 - Medium					
Arby's Roast Beef #719 (430 Gay Street)	X	40	40		1			1	Catagory 4 - Low					Business is closed.
Arby's Roast Beef#153 (6903 Kingston Pike)		30	30		1			1	Catagory 3 - Medium					
Arnstein Jewish Community Center		70	70		1			1	Catagory 3 - Medium					
Asian Chao (West Town Mall)		50	50		2		1	1	Catagory 3 - Medium					
Asian Express	X	2000		2000	2	1		1	Category 4 - Low				1	New FSF. Business is closed.
Atria Weston Place		1500		1500	1			1	Catagory 3 - Medium					
Aubrey's Restaurant		2000		2000	1			1	Catagory 3 - Medium					
Aunt Helmas Country Store	X	1000		1000	2	1		1	Catagory 4 - Low					New FSF. Business is closed.
Auntie Anne's (Knoxville Center)		30	30		3		2	1	Catagory 3 - Medium					
Auntie Anne's (West Town Mall)		40	40		2		1	1	Catagory 3 - Medium					
Austin-East High School		1500		1500	1			1	Catagory 3 - Medium					
Austin's Steakhouse	X	1000		1000	1			1	Category 4 - Low					Business is closed. Building razed.
Azteca Market	X	*-	*-		1			1	Category 4 - Low					No food production at facility.
B & D Rib Shack		50	50		1			1	Catagory 3 - Medium					
Backroom BBQ	X	40	40		1			1	Catagory 4 - Low					Business is closed.
Backyard Burgers #1145		1000		1000	1			1	Catagory 3 - Medium					
Baja Café	X	40	40		1			1	Category 4 - Low					Business is closed.
Bangkok Tokyo Thai & Sushi	X	1000		1000	1			1	Category 4 - Low					Business is closed.
Barley's Taproom & Pizzeria		1000		1000	1			1	Catagory 3 - Medium					
Barnes & Noble Cafe #2838		1000		1000	1			1	Catagory 3 - Medium					
Barnie's Coffee & Tea Co. (West Town Mall)	X	20	20		1			1	Category 4 - Low					Business is closed.
Baskin Robbins/Blimpie's		30	30		1			1	Catagory 3 - Medium					
Bearden Beer Garden	X	*-	*-		1	1			Category 4 - Low					New FSF. No food production.
Bearden Elementary School		1000		1000	1			1	Catagory 3 - Medium					
Bearden High School		*4000		3000	1			1	Catagory 3 - Medium					*FSF has exceeded grease trap size requirement.
Bearden Middle School		100	100		1			1	Catagory 3 - Medium					
Beaumont Elementry School		1000		1000	1			1	Catagory 3 - Medium					
Bella Luna		50, 100	50, 100		1	1			Category 2 - High				1	New FSF, has dishwasher on internal trap, no place to put GI.
Bellacino's Pizza and Grinders		50	50		1			1	Catagory 3 - Medium					
Belle Morris Elementary		1000		1000	1			1	Catagory 3 - Medium					
Bida Siagon		40	40		1			1	Category 3 - Medium					
Big Bites Pizza	X	50	50		1			1	Category 4 - Low					Business is closed.
Big Fatty's		1000		1000	2		1	1	Catagory 2 - High	1				
Big Tiny's Grill		30,30	30, 30		1	1			Category 2 - High					New FSF. Has dishwasher on internal
Bistro at The Bijou		100	100		1			1	Catagory 2 - High					Has dishwasher on internal no place to put GI.
Bistro By The Tracks		1500		1500	1			1	Category 3 - Medium					
Blackbird Coffee House	X	60	60		2		1	1	Category 4 - Low					Business is closed.
Bliss Entertainment		30	30		2	1		1	Category 4 - Medium					New FSF. No food production.

Blue Chips Sports Pub & Grill		40	40		2		1	1	Catagory 3 - Medium					
Blue Coast Burrito		50,150	50, 150		1	1			Category 2 - High				2	New FSF, dishwasher on internal no place to put GI.
Blues and Jazz Sports Bar	X	*-	*-		1			1	Category 4 - Low					No food production.
Bonefish Grill		2000		2000	1			1	Catagory 3 - Medium					
Borders Books Music & Cafe	X	**40	40		2		1	1	Catagory 4 - Low	1				**FSF is in enforement, business closed.
Bountiful Blessings		40	40		1			1	Category 3 - Medium					
Boyd's Jig and Reel		50,150	50,150		1	1			Category 2 - High				2	New FSF, dishwasher on internal no place to put GI.
Boys and Girl Club of Greater Knoxville (407 Caswell)		*1000, 1000		1000	1			1	Category 4 - Low					*FSF has exceeded grease trap size requirement.
Brakebill Nursing Home		3000		3000	1			1	Catagory 3 - Medium					
Bravo's		1500		1500	1			1	Catagory 3 - Medium					
Brazerios Churrascaria		1500		1500	3	1	1	1	Category 3 - Medium					New FSF.
Breadbox Food Store (5328 Pleasant Ridge)		20	20		1			1	Catagory 3 - Medium					
Breadbox Food Store #44 (5014 Washington Pike)		1000		1000	1			1	Catagory 3 - Medium				1	Business has relocated to new location.
Breaker's Sports Bar (CLOSED)	X	1000		1000	2			2	Catagory 4 - Low					Business is closed.
Brewski's Too		40	40		1	1			Catagory 3 - Medium					New FSF.
Brixx Pizza		2000		2000	2		1	1	Catagory 3 - Medium					
Broadway Baptist Church		1500		1500	1			1	Category 4 - Low					
Brownie's 2	X	40	40		1			1	Catagory 4 - Low					Business closed.
Bruegger's Bagels	X	50	50		1			1	Category 4 - Low					Business closed.
Bruno's Pizzeria		30	30		3	1	1	1	Category 3 - Medium					New FSF.
Bruster's Ice Cream		*1500	50		1			1	Category 4 - Low					*FSF has exceeded grease trap size requirement.
Buddy's Bar B Q Banquet Hall (5806 Kingston Pk.)		1500		1500	1			1	Catagory 3 - Medium					
Buddy's Bar B Q Bearden (5806 Kingston Pk.)		1500		1500	1			1	Catagory 3 - Medium					
Buddy's Bar BQ (8402 Kingston Pk.)		***40		1500	1			1	Category 2 - High					*** FSF has planned to upgrade to larger GI before enforcement action.
Buddy's Bar BQ (4401 Chapman Hwy.)		1500		1500	1			1	Category 3 - Medium					
Buddy's Bar BQ (4500 N. Broadway)		1000		1000	1			1	Catagory 3 - Medium					
Buddy's Bar BQ (3700 Magnolia)		1500		1500	1			1	Catagory 3 - Medium					
Buffalo Wild Wings Grill and Bar	X	1500		1500	2			2	Catagory 4 - Low					Business is closed.
Burger King (2806 N. Broadway)		1000		1000	1			1	Catagory 3 - Medium					
Burger King #11722 (7206 Region Lane)		1500		1500	1			1	Catagory 3 - Medium					
Burger King #12141 (127 Northshore)		1500		1500	1			1	Catagory 3 - Medium					
Burger King #13146 (2800 Chapman Hwy.)		1500		1500	1			1	Catagory 3 - Medium					
Burger King #5346 (319 Merchants)		1000		1000	1			1	Catagory 3 - Medium					
Burger King #9679 (5316 Millertown)		1500		1500	1			1	Catagory 3 - Medium					
Burger King (8412 Kingston Pk.)		1000		1000	2		1	1	Category 3 - Medium	1				
Burger King (5310 Middlebrook)		1500		1500	1			1	Catagory 3 - Medium					
Burlington Fish Market		40	40		1			1	Category 4 - Low					
Busby's Tango Grille	X	1500		1500	1			1	Category 4 - Low					Business is closed.
Bush Brothers		1500, 100	100	1500	1			1	Catagory 3 - Medium					
Butcher Shop	X	1500		1500	1			1	Catagory 4 - Low					Business is closed.
C & C Café		20	20		2		1	1	Category 4 - Low					
Cafe 4		1500		1500	1			1	Catagory 3 - Medium					
Cairo Cafe		100, 20	100, 20		1			1	Catagory 2 - Medium					Dishwasher on internal no place to put GI.
Cajun Cafe & Grill		40, 20	40, 20		3		2	1	Catagory 3 - Medium					
Calhoun's (400 Neyland)		1500		1500	1			1	Catagory 3 - Medium					
Calhoun's (6515 Kingston Pk.)		1500		1500	1			1	Catagory 3 - Medium					
Canaan Baptist Church	X	750	*-		1			1	Category 4 - Low					**FSF has exceeded grease trap size requirement. No production at facility.
Cancun Mexican Restaurant (4409 Chapman)		200, 50	200, 50		4		3	1	Category 2 - High	1				Has dishwasher on internal no place to install GI.
Cancun Mexican Restaurant (8606 Asheville)	X	1000		1000	1			1	Category 4 - Low					Business is closed.
Cancun Mexican Restaurant (4829 N. Broadway)		1000		1000	1			1	Catagory 3 - Medium					
Capone's Windy City	X	40	40		1			1	Category 4 - Low					Business is closed, store in location.
Cappuccino's/Copper Cellar Restaurant		1500		1500	1			1	Catagory 3 - Medium					
Captain D's # 3204 (812 Merchants)		1000		1000	1			1	Catagory 3 - Medium					
Captain D's #3205 (4320 Chapman)		1000		1000	1			1	Catagory 3 - Medium					
Captain D's #3406 (3121 N. Broadway)		1000		1000	2		1	1	Catagory 4 - Low					Business is closed.
Cardins Drive-In		40	40		1			1	Catagory 3 - Medium					
Carleo's Lounge		50	50		1			1	Category 3 - Medium					
Carmike Cinemas 10		40	40		1			1	Catagory 3 - Medium					
Carousel II	X	*-	*-		1			1	Category 4 - Low					No food production at facility.
Carringer & Son's Market		40	40		1			1	Catagory 3 - Medium					
Carter Elementary		1000, 200	200	1000	1			1	Catagory 3 - Medium					
Carter High School		2000		2000	1			1	Catagory 3 - Medium					
Carter Middle School		1500		15000	1			1	Catagory 3 - Medium					
Casa Don Gallo		**2000		2000	2		1	1	Catagory 1 - Unacceptable					**FSF is in enforcement.
Cassidy's Country Deli	X	30	30		1			1	Category 4 - Low					Business is closed.
Catholic Charities of East TN.		1000		1000	1			1	Catagory 3 - Medium					
Cantinella's		40	40		2		1	1	Category 3 - Medium					
Central Baptist Church Early Child Ctr.		1000, 100			1			1	Category 4 - Low					
Central Baptist Church of Bearden		50,50,40	50,50,40		2		1	1	Catagory 3 - Medium	1				
Central High School		*4000		2000	1			1	Catagory 3 - Medium					*FSF has exceeded grease trap size requirement.
Central Park		1000		1000	1			1	Catagory 3 - Medium					
Central United Methodist Church		1000		1000	1			1	Catagory 4 - Low					
Chadwick's Churn		40	40		1	1			Category 3 - Medium				1	New FSF.
Chaiyo's Thai & Sushi		40	40		1			1	Catagory 3 - Medium					

Chandler's Deli		40	40		1		1	Catagory 3 - Medium					
Chapman Learning Center		40			2		1	Category 3 - Medium					
Charleys Grilled Subs		60	60		3		2	Category 3 - Medium					
Cheddars		3000		2000	2	1	1	Category 3 - Medium	1			1	FSF has exceed size requirement.
Chepa's Mexican Restaurant	X	40	40		1			Category 4 - Low					Business is closed.
Cherokee Country Club		1000		1000	1			Category 3 - Medium					
Cherokee Health Systems		1500		1500	1			Category 4 - Low					
Chesapeakees		1000		1000	1			Category 3 - Medium					
Chez Guevara		1500		1500	1			Category 3 - Medium					
Chez Liberty		1500		1500	2		1	Category 3 - Medium	1				
Chicago Grill	X	*-	*-		1			Category 4 - Low					Business is closed.
Chick-Fil-A (7063 Kingston Pk.)		1500		1500	1			Category 3 - Medium					
Chick-Fil-A (800 S. Gay Street)		150	150		1			Category 3 - Medium					
Chick-Fil-A (3001 Knoxville Center Dr.)		75	75		4		3	Category 3 - Medium	1			1	
Chick-Fil-A (7600 Kingston Pk.)		50	50		4		3	Category 3 - Medium					
Child & Family Tennessee		1000		1000	1			Category 3 - Medium					
Children At Play Learning Center		30	30		1			Category 3 - Medium					
Children's Center of Knoxville		40	40		1			Category 3 - Medium					
Chilhowee Elementary		1500		1500	1			Category 3 - Medium					
Chili's (6635 Clinton Hwy.)		1500		1500	1			Category 3 - Medium					
Chili's Restaurant #34 (7304 Kigston Pk.)		1500		1500	2		1	Category 3 - Medium	1				
China City	X	30,30	30,30		1			Category 4 - Low					Business is closed. New business is remodeling.
China Garden		1000		1000	2		1	Category 3 - Medium	1				
China Wok		1500		1500	1			Category 3 - Medium					
China King Restaurant	X	40,40,40	40,40,40		1			Category 4 - Low					Business closed. New FSF is opening in location.
Chop House		2000		2000	1			Category 3 - Medium					
Christenberry Elementary		1000		1000	1			Category 3 - Medium					
Christenberry North		1000		1000	1			Category 3 - Medium					
Chrome Pony	X	40	40		2			Category 4 - Low					Business is closed.
Chuck E Cheese #055		1500		1500	1			Category 3 - Medium					
Church Street UMC		150, 50	150, 50		1			Category 3 - Medium					
Ci Ci's Pizza (2885 Tazewell)		1000		1000	1			Category 3 - Medium					
Ci Ci's Pizza (8414 Kingston Pk.)		1000		1000	1			Category 3 - Medium					
Cinnabon		30	30		3		2	Category 3 - Medium					
Cities Cupcake Boutique		60	60		1			Category 3 - Medium					
Cityview Baptist Church		1000		1000	3	1	2	Category 3 - Medium				1	New FSF, upgraded 50# internal to a 1000 GI.
City/County Building Jail		*1500, 1500		2000	1			Category 3 - Medium					*FSF has exceeded grease trap size requirement.
Clarion Inn	X	*-	*-		1			Category 4 - Low					No food production at facility.
Clayborn Temple	X	*-	*-		1	1		Category 4 - Low					New FSF, showed in SSO query, no food production.
Club Leconte		100, 100	100, 100		1			Category 2 - High					FSF has dishwasher on internal. No place for GI to be installed.
Club XYZ	X	*-	*-		1			Category 4 - Low					No food production at facility.
Coffee & Chocolate		30	30		1			Category 2 - High					FSF has dishwasher on internal. No place for GI to be installed.
Coffee Cup and Café	X	40	40		1			Category 4 - Low					Business is closed.
College Hill Seventh Day Adventist	X	*-	*-		1			Category 4- Low					No food production at facility.
Colonel's Delicatessen		40	40		1			Category 3 - Medium					
Columbus Home	X	*-	*-		1			Category 4 - Low					No food production at facility.
Comfort Suites Hotel		40	40		1			Category 4 - Low					No food production at facility.
Continuum Courtyard (Inskip Road)		100	100		1			Category 3 - Medium					
Continuum Courtyard (Parkway)		100	100		1			Category 3 - Medium					
Cook Out (Cumberland Ave.)		1500		1500	1	1		Category 3 - Medium					New FSF.
Cook Out (Kingston Pike)		1000		1000	1	1		Category 3 - Medium					New FSF.
Cool Beans Restaurant		1000		1000	1			Category 3 - Medium					
Coolato Gelato's Italian Ice		*6500		3000	1			Category 4 - Low					*FSF has exceeded trap size requirement. Shares trap with other FSF's.
Copa Cabana Sports Bar	X	30	30		2			Category 4 - Low					Business is closed.
Copper Cellar/Cumberland Grill (1807 Cumberland Ave.)		2000		2000	1			Category 3 - Medium					
Copper Cellar Commissary (3001 Industrial Park)		1000		1000	1			Category 3 - Medium					
Corner Market	X	50	50		1			Category 4 - Low					Business is closed.
Country Table Restaurant	X	40	40		1			Category 4 - Low					Business is closed.
Court South (2934 Alcoa Hwy.)		40, 20	40, 20		1			Category 4 - Low					Seasonal use, summer only.
Court South (Merchants Blvd.)	X	20	20		1			Category 4 - Low					No food production at facility.
Coyote Joes		40	40		1			Category 3 - Medium					
Cozymel's	X	1000		1000	1			Category 4- Low					Business is closed.
Cracker Barrel # 546 (2920 S. Mall Rd.)		1000, 1000		2000	1			Category 3 - Medium					
Cracker Barrel #12 (Central Ave. Pk.)		*1500, 1500		2000	1			Category 3 - Medium					*FSF has exceeded grease trap size requirement.
Cracker Barrel #170 (Cracker Barrel Lane)		1,500		1500	1			Category 3 - Medium					
Creative Catering		50, 20	50, 20		1			Category 3 - Medium					** FSF installed new internal under enforcement.
Cross Ministry	X	1500		1500	1			Category 4 - Low					No food production at facility.
Cueva Bar	X	*-	*-		1	1		Category 4 - Low					No food production planned at this facility.
Cumberland House Hotel		3000		3000	1			Category 3 - Medium					
Cuppy's Coffee and More	X	40	40		1			Category 4 - Low					Business is closed.
Dairy Queen	X	1000		1000	1			Category 4 - Low					No food production at facility.
Dalawah Hut African Shop	X	*-	*-		1			Category 4 - Low					Business is closed.
Darwin's Den	X	*-	*-		1	1		Category 4 - Low					Business is closed.
DaVinci's Pizza (113 S.Central Ave.)		40	40		1			Category 3 - Medium					

DaVinci's Pizza (3337 Sutherland)		2000		1000	1			1	Catagory 3 - Medium					
Days Inn (Asheville Hwy.)	X	*-	*-		1			1	Category 4 - Low					No food production at facility.
Daytona Nights	X	40,40	40,40		1			1	Category 4 - Low					Business is closed.
Dazzio Pizza		100, 50	100, 50		1			1	Catagory 3 - Medium					
Dead End B.B.Q.		1500		1500	1			1	Catagory 3 - Medium					
Deli to Go		30	30		1	1			Category 3 - Medium					New FSF.
Del Potosi Bakery		50	50		2	1	1		Category 3 - Medium					New FSF.
Denton's Orange Drink		1000		1000	2			2	Catagory 3 - Medium					
Diamond Carwash and Deli		40	40		2	1	1		Category 3 - Medium				1	New FSF.
Dippin Donuts		1000		1000	1			1	Catagory 3 - Medium					
Dixson's Bar B Que		40	40		1			1	Catagory 3 - Medium					
Doan's Market & Deli		30	30		1			1	Catagory 3 - Medium					
Dogwood Elementary School		1000		1000	1			1	Catagory 3 - Medium					
Domino's (7419 Middlebrook)		1500		1500	3		2	1	Catagory 3 - Medium					Shares trap with another FSF.
Domino's Pizza (2104 Cumberland)		40	40		1			1	Catagory 3 - Medium					
Domino's Pizza (5420 Pleasant Ridge)		40	40		2		1	1	Catagory 3 - Medium	1				
Domino's Pizza #5466 (900 N. Broadway)		40	40		1			1	Catagory 3 - Medium					
Domino's Pizza (7527 Northshore)		40	40		2		1	1	Catagory 3 - Medium					
Don Pablo's		1000		1000	1			1	Catagory 3 - Medium					
Double D. Pub & Grub		30	30		1			1	Catagory 3 - Medium					
Downtown Brewery and Grill		150	150		1			1	Catagory 2 - High					Has dishwasher on internal trap, no place to install a GI.
Downtown Grind		30	30		2		1	1	Category 4 - Low					
Duncan Cafe/ Duncan Building		40	40		1			1	Catagory 3 - Medium					
Dunkin Donuts		1500		1500	1			1	Catagory 3 - Medium					
Dynasty Express #2 (1647 Cumberland)		30	30		2		1	1	Catagory 3 - Medium					
Dynasty Express (4911 N. Broadway)		40	40		1			1	Catagory 3 - Medium					
E. Anderson Market	X	*-	*-		1			1	Category 4- Low					Business is closed.
E. M. Jellinek		1000		1000	1	1			Category 3 - Medium				1	New FSF.
Earthfare		1500		1500	1			1	Catagory 3 - Medium					
East Knox Elementary School		1500		1500	1			1	Catagory 3 - Medium					
East Tennessee Children's Hospital		2000		2000	1			1	Catagory 3 - Medium					
East TN Regional Juvenile Service Cent.		2000		2000	2		1	1	Catagory 3 - Medium					
Echo Bistro & Wine		1000		1000	2			2	Catagory 3 - Medium					
El Charro		1000		1000	1			1	Catagory 3 - Medium					
El Chico Restaurant #1		1000		1000	1			1	Catagory 3 - Medium					
El Mezcal Mexican Restaurant		200	200		2			2	Catagory 3 - Medium					
El Mezon	X	40	40		1			1	Category 4 - Low					Business is closed.
El Tenampa Garibaldi LLC		30	30		1			1	Category 4 - Low					Business is closed.
Elmcroft of West Knoxville		1500		1500	1			1	Catagory 3 - Medium					
Emmanuel United Preb. Church	X	*-	*-		1			1	Category 4 - Low					New FSF, showed in SSO query, no food production.
Entertainer Catering		100	100		1			1	Category 4 - Low					
Ephesus Mediterranean Grill		30	30		1			1	Catagory 3 - Medium					
External Life Harvest Café	X	1500		1500	1			1	Category 4 - Low					Business is closed.
Fair Garden Elementary School		500		500	1			1	Catagory 3 - Medium					
Farley Burgers		50	50		7	1	5	1	Category 3 - Medium					New FSF.
Fats BBQ	X	40	40		1			1	Category 4 - Low					Business is closed.
Favorite Market	X	*-	*-		1			1	Category 4 - Low					No food production at facility.
Fazoli's #5046		1000		1000	1			1	Catagory 4 - Low					Business is closed.
Fifth Avenue Baptist Church		100	100		1			1	Catagory 3 - Medium					
Firedog	X	*-	*-		1	1			Category 4- Low					New FSF. Business is closed.
Firehouse Subs (128 Buckingham)		50	50		1			1	Catagory 3 - Medium					
FireHouse Subs (4916 Kingston Pk.)		50	50		1			1	Catagory 3 - Medium					
Firehouse Subs (5226 N. Broadway)		1500		1500	1			1	Catagory 3 - Medium					
Firehouse Subs #191 (1708 Cumberland)		40	40		1			1	Catagory 3 - Medium					
First Christian Church	X	*-	*-		1			1	Category 4 - Low					No food production at facility.
First Lutheran Church and School		40	40		1			1	Catagory 3 - Medium					
First Step II Inc. Young Adventurers (520 Sevier)		40	40		3		2	1	Category 4 - Low					
First Steps II (4605 Old Broadway)	X	*-	*-		1			1	Category 4 - Low					No food production at facility.
First United Methodist Church		100, 40			1			1	Catagory 3 - Medium					
Five Guys Burgers (Brookview Way)		1500		1500	1			1	Catagory 3 - Medium					New FSF.
Five Guys Burgers (Broadway)	X	*-		1500	1			1	Category 4 - Low					Business never opened.
Florence Crittenton Agency Inc.		1000		1000	4		3	1	Category 3 - Medium					
Food City (4580 Chapman)		1000		1000	1			1	Catagory 3 - Medium					
Food City (284 Morrell)		1000		1000	1			1	Catagory 3 - Medium					
Food City # 673 (4216 N. Broadway)		1500		1500	1			1	Catagory 3 - Medium					
Food City # 677 (5078 Clinton Hwy.)		1500		1500	1			1	Catagory 3 - Medium					
Food City # 678 (5801 Western)		1000		1000	2			2	Catagory 3 - Medium					
Food City #655 (7510 Asheville)		1000		1000	1			1	Catagory 3 - Medium					
Food City #674 (5941 Kingston Pk.)		1000		1000	1			1	Catagory 3 - Medium					
Food City #676 (1950 Western)		2000		2000	1			1	Catagory 3 - Medium					
Food City #685 (4805 N. Broadway)		1000		1000	2		1	1	Catagory 3 - Medium					
Food City #689 (2939 Alcoa)		1000		1000	1			1	Catagory 3 - Medium					
Food City (2712 Loves Creek)		1000		1000	1			1	Catagory 3 - Medium					
Food Lion #1545 (6221 Riverview)	X	1000		1000	1			1	Catagory 4 - Low					Business is closed.

Food Lion (4728 Centerline Drive)		1000		1000	1			1	Catagory 3 - Medium					
Fort Sanders Educational		50	50		1			1	Catagory 3 - Medium					
Fort Sanders Hospital		2000		2000	1			1	Category 2 - High					FSF has 2000 gallon GI that is pumped monthly.
Fountain City Creamery		30	30		2			2	Catagory 3 - Medium					
Fountain City Diner		2000		2000	2		1	1	Catagory 3 - Medium	1				
Fountain City Elementary		1000		1000	1			1	Catagory 3 - Medium					
Fountain City Presb. Church Childcare	X	*-	*-		1			1	Category 4 - Low					No food production at facility.
Fountain City UM Church	X	*-	*-		1			1	Category 4 - Low					No food production at facility.
Fox's Pizza		50	50		1			1	Catagory 3 - Medium					
Freedom Christian Academy		1000		1000	1			1	Catagory 3 - Medium					
Fresh Market & Deli		20	20		2			2	Catagory 3 - Medium					
Froots Smoothies	X	40	40		1			1	Catagory 4 - Low					Business is closed.
Froyoz (Broadway)		*1500	40		1	1			Category 4 - Low					*New FSF. FSF has exceeded grease trap size requirement.
Froyoz (Clinton Hwy)		40	40		1	1			Category 4 - Low				1	New FSF.
Froyoz (Forrest Park)		40	40		1	1			Category 4 - Low				1	New FSF.
Frullati Cafe	X	30	30		2		1	1	Catagory 4 - Low					Business is closed.
Frussies Deli		20	20		1			1	Catagory 4 - Low					Business is closed.
Fulton High School		1000		1000	2		1	1	Catagory 3 - Medium					
Game Over Deli	X	30	30		1			1	Category 4 - Low					Business is closed.
Garelli's #2	X	40	40		1			1	Category 4 - Low					Business is closed.
Garelli's #1	X	40	40		1			1	Category 4 - Low					Business is closed.
Garrett's Downtown Deli		50	50		2		1	1	Catagory 3 - Medium					
Gino's Pizza & Subs		30	30		3		2	1	Catagory 3 - Medium					
Ginza Japan	X	1000		1000	1			1	Category 4 - Low					Business is closed.
Gluton Free Goodies	X	1500		1500	1			1	Catagory 4 - Low					Business is closed.
Goal Post Tavern		1500		1500	2			2	Category 3 - Medium					New FSF.
Godfrey's Restaurant (Holiday Inn Express)		150	150		1			1	Category 2 - High					FSF has dishwasher on internal. No place for GI to be installed.
Golden City Restaurant	X	60, 40	60,40		1			1	Catagory 4 - Medium					Business is closed.
Golden Garden Chinese Restaurant		40	40		2		1	1	Catagory 3 - Medium					
Golden Roast	X	*-	*-		1			1	Category 4 - Low					No food production at facility.
Golden Wok		1000		1000	1			1	Catagory 3 - Medium					
Gordo's Catering		40	40		1			1	Category 4 - Low					
Gosh Ethiopian Restaurant		50	50		2	1		1	Category 3 - Medium					New FSF.
Granny Bea's Southern Cooking	X	1000		1000	3		2	1	Category 4 - low					Business is closed.
Great American Cookie Company (3001 Knoxville Center)		30	30		2		1	1	Catagory 3 - Medium					
Great American Cookies (7600 Kingston Pk.)		30	30		1			1	Catagory 3 - Medium					
Great American Steak & Buffet Co.		2000		2000	1			1	Catagory 3 - Medium					
Great Wraps (1838 Cumberland)	X	50	50		1			1	Category 4 - Low					Business is closed.
Green Magnet and Math Academy		1500		1500	1			1	Category 3 - Medium					
Gresham Middle School		1000		1000	1			1	Catagory 3 - Medium					
Grill Express	X	20	20		1			1	Catagory 4 - Low					Business is closed.
GSA Court House Café	X	1000, 40	40	1000	1			1	Catagory 4 - Low					Business is closed.
Guadalajara Market and Deli	X	50	50		1			1	Category 4 - Low					Business is closed.
Gunnie's Sports Bar		20	20		2	1		1	Category 3 - Medium					New FSF.
Gunthor's Galley	X	1500		1500	1			1	Catagory 4 - Low					Business is closed.
Gus's Good Time Deli		20	20		2		1	1	Catagory 3 - Medium					
Gus's Deli	X	30	30		1			1	Category 4 - Low					Business closed.
Guthrie's		1500		1500	2			2	Catagory 4 - Low					Business is closed.
Half Barrel		1500		1500	1			1	Catagory 3 - Medium					
Ham 'N' Goodys, Inc.		40	40		2		1	1	Catagory 3 - Medium					
Hampton Inn (7445 Sawyer)		50	50		1			1	Category 3 - Medium					
Hampton Inn & Suites (5411 Pratt Road)		*1500	50		1			1	Category 4 - Low					*FSF has exceeded grease trap size requirement.
Handy Dandy Market #5		40	40		2		1	1	Catagory 3 - Medium					
Hanna's Cafe #2		30	30		1			1	Catagory 3 - Medium					
Happy Garden Chinese		1000		1000	3		2	1	Catagory 3 - Medium	1				
Harb's Pizza & Deli		30	30		1			1	Catagory 3 - Medium					
Hard Knox Pizza		50	50		1			1	Catagory 3 - Medium					
Hardee's #1501786 (2919 Tazewell)		1000		1000	1			1	Catagory 3 - Medium					
Hardee's #1501798 (3318 Chapman)		1000		1000	1			1	Catagory 3 - Medium					
Hardee's #1501829 (2930 Alcoa)		1000		1000	1			1	Catagory 3 - Medium					
Hardee's #1501837 (3718 Western)		1000		1000	1			1	Catagory 3 - Medium					
Hardee's #1501874 (7426 Northshore)	X	1000		1000	1			1	Category 4 - Low					Business is closed.
Hardee's #1501785 (3926 Asheville)		1000		1000	1			1	Category 3 - Medium					
Hardee's Restaurant (7201 Kingston Pk.)		1500		1500	2		1	1	Catagory 3 - Medium					
Haru Hibachi and Sushi	X	1500		1500	2	1		1	Category 4 - Low					New FSF. Business is closed.
Harvest Echo Ridge Retirement Residence LLC		1500		1500	1			1	Catagory 3 - Medium					
Head Start (Prospect)		1000		1000	1			1	Catagory 3 - Medium					
Heritage Assisted Living		1000		1000	1			1	Category 3 - Medium					
Hibachi Factory (1815 Cumberland)		20	20		1			1	Catagory 3 - Medium					
Hibachi Factory (1645 Downtown West)		60	60		1			1	Catagory 3 - Medium					
Higher Grounds		30	30		1	1			Category 3 - Medium				1	New FSF.
Hillcrest Health Care North		2000, 500			1			1	Catagory 3 - Medium					
Hillcrest South		*2000, 500		2000	2		1	1	Catagory 3 - Medium					*FSF has exceeded grease trap size requirement.
Hillcrest West		1500		1500	2		1	1	Catagory 3 - Medium					

Ho Ho Chinese Restaurant	X	20, 20	20, 20		1			1	Catagory 4 - Low					Business is closed.
Hogan's Bakery		30	30		2		1	1	Catagory 3 - Medium					
Holiday Inn Central (1315 Kirby Road)	X	1000		1000	1			1	Catagory 4 - Low					Business is closed.
Holly's Eventful Dining		1000		1000	1			1	Category 3 - Medium					New FSF.
Holston Grill	X	30	30		1			1	Category 4 - Low					Business is closed.
Holston Healthcare		1000		1000	1			1	Category 3 - Medium					
Holston Hills Country Club		1000		1000	1			1	Category 3 - Medium					
Holston Middle School		1500		1500	1			1	Catagory 3 - Medium					
Holy Ghost Catholic Church		150, 50	150, 50		2		1	1	Category 4 - Low					
Holy Land Market		50	50		1			1	Category 3 - Medium					
Homewood Residence at Deane Hill		1000		1000	2		1	1	Catagory 3 - Medium					
Honey Baked Ham #2 (5308 Washington)		1500		1500	2		1	1	Category 4 - Low					
Honey Baked Ham (7205 Kingston Pk.)		1000		1000	1			1	Category 4 - Low					
Hong Kong House		1000		1000	4		2	2	Catagory 2 - High	1				Facility has GI maintenance issues.
Hooter's #2 (5005 Central Ave. Pk.)		1500		1500	1			1	Catagory 3 - Medium					
Hooter's Restaurant (8050 Kingston Pk.)		1000		1000	2			2	Catagory 3 - Medium					
Hott Rod's		40	40		1	1			Category 3 - Medium					New FSF.
House Of Dragon		20	20		1			1	Catagory 3 - Medium					
House of Thaller		1000		1000	4		3	1	Catagory 3 - Medium	1				
Huddle House	X	1000		1000	1	1			Category 4 - Low				1	Business is closed.
I Love N Y Pizza		40	40		1			1	Catagory 3 - Medium					
Ice Chalet	X	*-	*-		1			1	Category 4 - Low					No food production at facility.
Ingles		1000		1000	3		1	2	Catagory 3 - Medium					
Inskip Elementary		1000		1000	1			1	Catagory 3 - Medium					
Inskip Food Mart		50	50		1			1	Catagory 3 - Medium					
Inskip Grill		40	40		2		1	1	Category 3 - Medium					New FSF.
International House of Pancakes (7218 Kingston Pk.)		2000		2000	2		1	1	Catagory 3 - Medium					
International House of Pancakes #1 (5604 Merchants)		1000		1000	1			1	Catagory 3 - Medium					
Isabella Towers	X	*-	*-		1			1	Category 4 - Low					No food production at facility.
It's All About The Fudge	X	20	20		1			1	Category 4 - Low					Business is closed.
J & D's Soul Food		40	40		1	1			Category 3 - Medium					New FSF.
Jack' Breeze Thru Market	X	40	40		1			1	Catagory 4 - Low					Business is closed.
Jacob's Time-Out Deli		40	40		1			1	Catagory 3 - Medium					FSF installed new larger grease trap, increased capacity.
Jason's Deli		2000		2000	1			1	Category 3 - Medium					New FSF.
Jason Grill & Deli	X	*-	*-		1			1	Category 4 - Low					Business is closed.
Jazzy Lynn's		30	30		1	1			Category 3 - Medium					New FSF.
Jets Pizza		50	50		1			1	Catagory 3 - Medium					
Jimmy John Gourmet Sand.		40	40		1			1	Catagory 3 - Medium					
Jimmy's Original Southern Pub		20	20		1			1	Category 3 - Medium					
JMS Concessions	X	*-	*-		1			1	Category 4 - Low					Business is closed.
John T. O'Connor Senior Citizens Center	X	40	40		1			1	Category 4 - Low					No food production at facility.
Jolly's Sports Bar	X	*-	*-		1	1			Category 4 - Low					No food production at facility.
Judy Ann's Deli		20	20		2		1	1	Category 4 - Low					Business is closed.
Judy's II Lounge & Restaurant	X	1000		1000	1			1	Category 4 - Low					Business is closed.
Just Ripe Market		50,150	50,150		1	1			Category 3 - Medium				2	New FSF.
Kanpai of Tokyo		1500		1500	1			1	Catagory 3 - Medium					
Kash-N-Karry	X	*-	*-		1			1	Category 4 - Low					No food production.
Kat's Sports Bar	X	20	20		1			1	Catagory 4 - Low					Business is closed.
Kaya Korean Restaurant		50	50		1			1	Catagory 3 - Medium					
Kay's Ice Cream		30	30		1			1	Catagory 3 - Medium					
Kenjo Market #11 (1400 N. Central)		40	40		1			1	Catagory 3 - Medium					
Kenjo Market #12 (3644 Sevierville)		40	40		1			1	Catagory 3 - Medium					
Kenjo Market #30 (6519 Chapman)		30	30		1			1	Catagory 3 - Medium					
Kenjo Market #31 (3120 Chapman)		30	30		1			1	Catagory 3 - Medium					
Kesha's Market	X	40	40		1			1	Category 4- Low					Business is closed.
KFC (1030 Shurmard)		1500		1500	1			1	Catagory 3 - Medium					
KFC (2918 N. Broadway)		1000		1000	3		2	1	Catagory 3 - Medium	1				
KFC (2456 Magnolia)	X	1000		1000	3		2	1	Category 4 - Low	1				Business is closed.
KFC (5266 Millertown)		1500		1500	2		1	1	Catagory 3 - Medium					
KFC (4419 Western)		1500		1500	1			1	Catagory 3 - Medium					
KFC (4200 Chapman)		1500		1500	4		2	2	Category 3 - Medium	1				
Kichi Sushi & Noodle		50	50		3		2	1	Catagory 3 - Medium					
Kick Shots	X	50	50		1			1	Category 4 - Low					Business is closed.
Kids Inkorporated		30	30		1			1	Category 4 - Low					
Kids Place-Camp		40	40		1			1	Catagory 3 - Medium					
King Tut's Grill		40	40		1			1	Catagory 3 - Medium					
Kings Market (1542 Texas Ave.)	X	40	40		1			1	Catagory 4 - Low					Business is closed.
King's Market # 2 (1300 Baxter)		30	30		1			1	Catagory 3 - Medium					
Kitts Market Cafe		1500		1500	1			1	Catagory 3 - Medium					
Kiwanis-East II Head Start		1000		1000	1			1	Catagory 3 - Medium					
Knotheads Café and Deli		40	40		1			1	Category 3 - Medium					FSF installed new trap due to enforcement.
Knox Area Rescue Ministries		2000		2000	1			1	Catagory 3 - Medium					
Knox County Detention Facility		1500		1500	1			1	Catagory 3 - Medium					
Knox-Knox County-CAC Head Start- Claxton		1000		1000	1			1	Category 3 - Medium					

Knoxville Adaptive Education Center		1500		1500	1			1	Catagory 3 - Medium					
Knoxville Billiards		20	20		1			1	Catagory 3 - Medium					
Knoxville Center Mall		1500		1500	2		1	1	Catagory 3 - Medium					
Knoxville Chinese Christian Church		1000		1000	1			1	Catagory 3 - Medium					
Knoxville Coliseum		20	20		1			1	Category 4 - Low					
Knoxville College Cafeteria		60	60		1			1	Catagory 3 - Medium					
Knoxville Convention Center (Concession Kitchen)		50	50		1			1	Catagory 3 - Medium					
Knoxville Convention Center (Main Kitchen)		1500, 1500		3000	1			1	Catagory 3 - Medium					
Knoxville Elks Lodge #160		40	40		1			1	Category 4 - Low					
Knoxville Expo Center		1500, 40		1500	1			1	Category 3 - Medium					
Knoxville Food and Drink	X	1500		1500	1			1	Category 4 - Low					Business is closed.
Knoxville Golf Course		40	40		1			1	Category 4 - Low					
Knoxville Hilton		250	250		1			1	Catagory 3 - Medium					
Knoxville Pearl	X	*-	*-		1			1	Category 4 - Low					No food production at facility.
Knoxville Racquet Club	X	40	40		1			1	Catagory 4 - Low					No food production at facility.
Knoxville Zoological Gardens		500, 40	40	500	1			1	Category 4 - Low					
Knoxville-Knox County Action Community Mobile Meals	X	*1500, 1500		2000	2		1	1	Catagory 4 - Low					*FSF has exceeded grease trap size requirement. Kitchen part closed.
Koi Fuzion		**100, 100	100, 100		1			1	Catagory 2 - High	1				**FSF is in enforcement. Has dishwasher on internal.
Korea House Restaurant		40	40		2		1	1	Catagory 3 - Medium					
Krispy Kreme (6201 Kingston Pk.)		1500		1500	1			1	Catagory 3 - Medium					
Krispy Kreme #55 (4842 N. Broadway)		1000		1000	1			1	Category 3 - Medium					
Kroger (4414 Asheville)		1000, 40	40	1000	1			1	Catagory 3 - Medium					
Kroger # 506 (2217 N. Broadway)		50	50		1			1	Catagory 3 - Medium					
Kroger # 516 (5003 N. Broadway)	X	40	40		1			1	Category 4 - Low					Business is closed.
Kroger # 848 (4918 Kingston Pk.)		1000		1000	1			1	Catagory 3 - Medium					
Kroger # 870 (4440 Western)		20	20		1			1	Catagory 3 - Medium					
Kroger #531 (4409 Chapman)		1500		1500	1			1	Catagory 3 - Medium					
Kroger (5201 N. Broadway)		1500		1500	1			1	Catagory 3 - Medium					
Krystal # 13 (3910 Western)		1000		1000	2			2	Catagory 3 - Medium					
Krystal # 6 (5219 Clinton)		1500		1500	1			1	Catagory 3 - Medium					
Krystal # 7 (4100 Chapman)		1000		1000	1			1	Catagory 3 - Medium					
Krystal #4 (2815 N. Broadway)		1000		1000	2			2	Catagory 3 - Medium					
Krystal #KNXF14 (5320 Millertown)		1000		1000	1			1	Catagory 3 - Medium					
Krystal Co. #14 (7215 Strawberry Plains)		1000		1000	1			1	Catagory 3 - Medium					
Krystal Co. #2 (1718 Cumberland)		1000		1000	1			1	Catagory 3 - Medium					
K-Town Kebobs	X	40	40		2			2	Category 4 - Low					Business is closed.
Kurt's		60	60		2		1	1	Catagory 3 - Medium	1				
Kwik Pantry	X	*-	*-		1			1	Category 4 - Low					No food production at facility.
Kwik Shop Exxon	X	*-	*-		1			1	Category 4 - Low					No food production at facility.
La Esperanza Market #1 (2412 Washington)		40	40		1			1	Catagory 3 - Medium					
La Fiesta Mexican Grill		1000		1000	1			1	Catagory 3 - Medium					
La Flor Mexican Bakery		40	40		1			1	Category 4 - Low					
La Huasteca Restaurant	X	1000		1000	1			1	Category 4 - Low					Business is closed.
La Huasteca Market & Restaurant		40	40		1			1	Category 3 - Medium					New FSF.
La Palma De Oro		100, 50	100, 50		1			1	Category 2 - High					Has dishwasher on internal.
La Quinta Inn	X	*-	*-		1			1	Category 4 - Low					No food production at facility.
La Rumba Restaurante & Bar		1500		1500	2		1	1	Catagory 3 - Medium					
La Tortilla Market		40	40		4	1	3		Category 3 - Medium	1	1		1	New FSF.
Lakeshore Mental Health Institute		200	200		1			1	Catagory 3 - Medium					
Lance's Cafe (Ford Dealership)		60	60		1			1	Catagory 3 - Medium					
Lariat Lounge	X	30	30		1			1	Category 4 - Low					Business is closed.
Las Cazeulitas	X	1500		1500	1			1	Category 4 - Low					Business is closed.
Latitude 35		100, 50, 20	100, 50, 20		1	1			Category 3 - Medium				2	New FSF, 2 new internal traps installed
Laurel Mountain Eatery		50	50		1			1	Catagory 3 - Medium					
Le Parigo Restaurant		1000		1000	1			1	Catagory 3 - Medium					
Lema's	X	40	40		1			1	Category 4 - Low				1	Business is temporarily closed..
Lenny's Sub Shop (4622 Kingston Pk.)		40	40		1			1	Catagory 3 - Medium					
Lenny's Sub Shop (522 Gay St.)		*6500		3000	2			2	Category 4 - Low					*exceeded grease trap size requirement, new FSF.
Lenny's Sub Shop (6631 Clinton Hwy.)	X	40	40		1			1	Catagory 4 - Low					Business is closed.
Lenny's Sub Shop (2901 Tazewell)		40	40		1			1	Catagory 3 - Medium					
Level 10	X	2000		1500	1			1	Catagory 4 - Low					Business is closed.
Little Caesars Pizza (2800 Magnolia)		1000		1000	2		1	1	Catagory 3 - Medium					
Little Caesars Pizza #052006 (4434 Western)		30	30		4		2	2	Catagory 3 - Medium	1	1			
Little Caesar's Pizza #2803 (4322 N. Broadway)		20	20		2		1	1	Catagory 3 - Medium					
Little Caesar's Pizza #2808 (4748 Centerline)		20	20		1			1	Catagory 3 - Medium					
Litton's Market & Restaurant		2000, 100	100	2000	1			1	Catagory 3 - Medium					
Logan's Steakhouse	X	1000		1000	1			1	Category 4 - Low					Building gone.
Long John Silver's (5227 Clinton Hwy.)	X	1000		1000	1			1	Category 4 - Low					Business is closed.
Long John Silver's (2816 Magnolia)		1500		1500	1			1	Catagory 3 - Medium					
Long John Silver's (4833 N. Broadway)		1500		1500	2		1	1	Category 3 - Medium	1				
Long John Silver's (4416 Western)		1000		1000	2		1	1	Catagory 3 - Medium					
Long's Drug Store		40	40		2		1	1	Catagory 3 - Medium					
Lonsdale Elementary		1500		1500	1			1	Catagory 3 - Medium					
Lonsdale Market and Deli		1500		1500	2	1		1	Category 3 - Medium				1	New FSF.

Lorenas		20	20		3		2	1	Category 3 - Medium					New FSF.
Los Lagos Bar & Grill		40	40		3		2	1	Catagory 3 - Medium					
Los Paisano's Mexican Restaurant		1000		1000	3		2	1	Catagory 3 - Medium					
Loser's	X	30	30		3		2	1	Category 4 - Low					New FSF. Business closed.
Louis' Restaurant		1000		1000	2			2	Catagory 3 - Medium					
Love Kitchen		70	70		1			1	Catagory 3 - Medium					
Lunch Box (800 S. Gay)	X	50	50		1			1	Catagory 4 - Low					Business is closed.
Lunch Box (1225 E. Wiesgarber)		40	40		1			1	Catagory 3 - Medium					
Lunch Box (607 Market Street)		20	20		1	1			Category 4 - Low				1	New FSF.
Lunch Box (2250 Sutherland)		50	50		1	1			Category 4 - Low				1	New FSF.
Lunch House		30, 15	30, 15		1			1	Catagory 3 - Medium					
Macleod's (501 Market)	X	20	20		1			1	Catagory 4 - Low					Business is closed.
Mac's Smokehouse and BBQ	X	*-	*-		1			1	Category 4 - Low					Business is closed.
Magnolia Cafe		40, 10	40,10		3		2	1	Category 3 - Medium					
Magnolia Cafeteria	X	1500		1500	1			1	Catagory 4 - Low					Business is closed.
Magnolia Provisions		1000, 1000		2000	1			1	Category 3 - Medium					
Magnuson's Hotel Restaurant		40	40		1			1	Category 3 - Medium					
Magpies		1500		1500	1			1	Category 4 - Low					
Mahogany's		100	100		1			1	Catagory 3 - Medium					
Mainstay Suites	X	*-	*-		1			1	Category 4 - Low					No food production at facility.
Majestic Castle Learning Center	X	*-	*-		1			1	Category 4 - Low					No food production at facility.
Makino		1000		1000	1			1	Catagory 3 - Medium					
Malibu 7 Restaurant & Dance		40	40		3		2	1	Catagory 3 - Medium					
Mandarin House (3001 Knoxville Center)		1000		1000	1	1			Category 3 - Medium					New FSF.
Mandarin House (314 Merchants)		1000		1000	2			2	Category 3 - Medium					
Mandarin House Restaurant (8111 Gleason)	X	1000		1000	1			1	Category 4 - Low					Business is closed. Remodeling into work out facility.
Manhattan's Antiques Bistro & Bar	X	40	40		1			1	Catagory 4 - Low					Business is closed.
Mapco	X	*-	*-		1	1			Category 4 - Low					No food production at facility.
Marble Slab (14 Market Square)		50	50		1			1	Catagory 3 - Medium					
Marble Slab (4885 N. Broadway)		40	40		1			1	Catagory 3 - Medium					
Marble Slab (4835 Kingston Pk.)		40	40		2		1	1	Catagory 3 - Medium					
Marble Slab #2 (7600 Kingston Pk.)		30	30		3		2	1	Catagory 3 - Medium					
Marcella's		40	40		1			1	Category 3 - Medium					
Marco's Pizza		1500		1500	2	1	1		Category 3 - Medium				1	New FSF.
Margarita's	X	1000		1000	1			1	Catagory 4 - Low					Business is closed.
Market Square Kitchen	X	40	40		1			1	Catagory 4 - Low					Business is closed.
Mark's Time Out Deli	X	50	50		1			1	Category 4 - Low					Business is closed.
Marriot Hotel		200,200, 40,40	200,200, 40,40		1			1	Category 3 - Medium					
Martha's Place	X	40	40		1			1	Catagory 4 - Low					Business is closed.
Mary's Deli	X	40	40		1			1	Category 4 - Low					Business is closed.
Maynard Elementary School		1500		1500	1			1	Catagory 3 - Medium					
McAlister's #1126 (2758 Schaad Road)		1000		1000	1			1	Catagory 3 - Medium					
McAlister's #2 (232 Morrell)		1000		1000	1			1	Catagory 3 - Medium					
McAlister's (1801 Cumberland)		1000		1000	5		4	1	Category 3 - Medium	1	1			
McDonald's (4410 Western)		1000		1000	1			1	Catagory 3 - Medium					
McDonalds # 3925 (322 Merchants)		1000		1000	1			1	Catagory 3 - Medium					
McDonalds #10662 (7402 Strawberry Plains)		1000		1000	1			1	Catagory 3 - Medium					
McDonalds #11484 (6526 Chapman Hwy.)		1000		1000	1			1	Catagory 3 - Medium					
McDonalds #11600 (5055 N. Broadway)		1000		1000	1			1	Catagory 3 - Medium					
McDonalds #1243 (7030 Kingston Pk.)		2000		2000	1			1	Catagory 3 - Medium					
McDonalds #2495 (1720 Cumberland)		2000		2000	1			1	Catagory 3 - Medium					
McDonald's #264 (2812 Magnolia)		1000		1000	1			1	Catagory 3 - Medium					
McDonalds #27127 (7686 Northshore)		1000		1000	1			1	Catagory 3 - Medium					
McDonalds #288 (3120 N. Broadway)		1000		1000	1			1	Catagory 3 - Medium					
McDonalds #392 (2505 Chapman)		1000		1000	1			1	Catagory 3 - Medium					
McDonalds (3051 Kenzel Road)		2000		2000	1			1	Catagory 3 - Medium					
McDonalds (5260 Millertown)		1000		100	1			1	Catagory 3 - Medium					
McDonald's (206 Walker Springs)		2000		2000	2		1	1	Catagory 3 - Medium	1				
McDougal's Chicken	X	1000		1000	1			1	Catagory 4 - Low					Business is closed.
Melissa's Ice Cream	X	*1500	50		1			1	Catagory 4 - Low					*FSF has exceeded grease trap size requirement. Business is closed.
Mellow Mushroom		1000		1000	1			1	Catagory 3 - Medium					
Melting Pot		40, 30	40, 30		1			1	Category 2 - High					FSF has dishwasher on internal. No place for GI to be installed.
Menchie's		40	40		1	1			Category 3 - Medium				1	New FSF.
Mer-Mer's Bakery		40	40		1			1	Catagory 3 - Medium					
Messiah Lutheran Church		1000		1000	1			1	Category 4 - Low					
Metro Village Mart	X	1500		1500	1			1	Category 4 - Low					Business is closed.
Mi Pubelo		60	60		1			1	Catagory 3 - Medium					
Mickey's	X	40	40		1			1	Catagory 4 - Low					Business is closed.
Middlebrook Market & Deli		40	40		1			1	Catagory 3 - Medium					
Midway Rehab Center		100	100		1	1			Category 2 - High				1	New FSF. Has dishwasher on intrernal trap, no place to install a GI.
Mike's Deli	X	40	40		1			1	Catagory 4 - Low					Business is closed.
Misaki Japanese Steak House		2000		2000	1			1	Catagory 3 - Medium					
Moe's Southwest Grill		30	30		1			1	Catagory 3 - Medium					
Mojoes Trailside Coffee House		40	40		2		1	1	Category 3 - Medium					

Mom's Kitchen	X	40	40		1			1	Category 4 - Low					Business is closed.
Monterrey Mexican Restaurant		1000		1000	1			1	Catagory 3 - Medium					
Mooreland Heights Elementary		25	25		1			1	Catagory 3 - Medium					
Mooyah Burgres		1500		1500	1	1			Category 3 - Medium				1	New FSF.
Mount Moriah FBH Church	X	*-	*-		1			1	Category 4 - Low					No food production at facility.
Mount Olive Elementary		800		800	1			1	Catagory 3 - Medium					
Mr. Gattis #610		40	40		1			1	Category 2 - High					FSF has dishwasher on internal.
Mrs Goodstuff's Cafe and Market	X	40	40		1			1	Category 4 - Low					Business has closed.
Ms. D's Restaurant		30	30		1			1	Catagory 3 - Medium					
Mt. Olive Baptist Church DCC		*1000, 1000		1500	1			1	Catagory 3 - Medium					*FSF has exceeded grease trap size requirement.
My Village CDC		50	50		1			1	Catagory 3 - Medium					
Nagoya Express Japanese Grill		30	30		1			1	Catagory 3 - Medium					
Nama Sushi Bar (506 Gay Street)		200	200		3	1	1	1	Category 2 - High				1	New FSF. Has dishwasher on internal.
Nama Sushi Bar (135 Gay Street)	X	100	100		1			1	Category 4 - Low					Business is closed.
Nama Sushi Bar (Kingston Pk.)		1000		1000	1			1	Catagory 3 - Medium					
Naples Italian Restaurant		1000		1000	1			1	Category 3 - Medium					
Napoli Pizza & Grill		30	30		1			1	Category 3 - Medium					
Neighbors Hot Dog Stand	X	40	40		1			1	Category 4 - Low					Business is closed.
New Amsterdam Bar & Grill		50, 40	50, 40		1			1	Category 2 - High					Has dishwasher on internal.
New China Restaurant		30, 30	30, 30		1			1	Catagory 3 - Medium					
NHC Healthcare of Ft. Sanders		*2000, 1000		2000	1			1	Catagory 3 - Medium					*FSF has exceeded grease trap size requirement.
Night Owl Deli	X	75, 40	75, 40		1			1	Category 4 - Low					Business is closed.
Nixon's Deli (5118 N. Broadway)		40	40		1			1	Catagory 3 - Medium					
Nixon's Deli (5716 Kingston Pk.)		40	40		1			1	Catagory 3 - Medium					
Nixon's Deli (508 Merchants)		30	30		1			1	Catagory 3 - Medium					
Nixon's Deli (7419 Middlebrook)		1500		1500	2		1	1	Catagory 3 - Medium					
Northhaven Healthcare		2000		2000	1			1	Catagory 3 - Medium					
Northwest Middle		1000		1000	1			1	Catagory 3 - Medium					
Norwood Elementary		1500		1500	1			1	Catagory 3 - Medium					
Oak Grove Lounge	X	30	30		1			1	Category 4 - Low					Business is closed.
Oasis Buffet		35, 25			1			1	Catagory 3 - Medium					
O'Charley's #208 (8077 Kingston Pk.)		1000		1000	1			1	Catagory 3 - Medium					
O'Charley's #361 (3050 S. Mall)		1500		1500	2		1	1	Catagory 3 - Medium					
O'Charley's # 217 (117 Cedar Lane)		1000		1000	1			1	Catagory 3 - Medium					FSF has 1000 gallon GI that needs to be pumped monthly.
Okee Dokee Market/ Dairy Queen	X	1000, 40	40	1000	1			1	Category 4 - Low					No food production at facility.
Old City Java		40	40		1			1	Category 4 - Low					
Old College Inn	X	1500		1500	1			1	Catagory 4 - Low					Business is closed.
Olive Garden Restaurant #92		1000		1000	1			1	Catagory 3 - Medium					
Olivet Baptist Church		1000		1000	1			1	Catagory 4 - Low					FSF has new gym and started preparing food.
Ollantay's Havana Nights	X	40	40		1			1	Catagory 4 - Low					Business is closed.
One Tree Grille	X	1500		1500	1			1	Category 4 - Low					Business is closed.
Oodles Restaurant		40	40		2		1	1	Catagory 2 - High					FSF has dishwasher on internal and compliance issues with cleaning trap.
Orange Sports Grill	X	1000		1000	1			1	Catagory 4 - Low					Business is closed.
Oriental Express		40, 10	40, 10		2		1	1	Catagory 3 - Medium					
Osaka Hibachi & Sushi (Chapman Highway)		1500		1500	3	1	1	1	Category 3 - Medium				1	New FSF
Osaka Hibachi & Sushi (Sutherland Ave.)		2000		2000	2		1	1	Category 3 - Medium					
Oscar's Restaurant (6907 Kingston Pk.)	X	30	30		1			1	Catagory 4 - Low					Business is closed.
Oscar's Restaurant (1840 Cumberland)		30, 30	30, 30		2		1	1	Catagory 3 - Medium					
Our Place		10	10		1			1	Category 3 - Medium					
Outback Steakhouse #2 (7400 Sawyer Lane)		*1500, 1500		2000	1			1	Catagory 3 - Medium					*FSF has exceeded grease trap size requirement.
Outback Steakhouse #4317 (314 Merchants)		1000		1000	2		1	1	Catagory 3 - Medium					
Panda's Chinese Restaurant		40, 40	40, 40		1			1	Catagory 3 - Medium					
Panera Bread (4855 Kingston Pk.)		1000		1000	1			1	Catagory 3 - Medium					
Panera Bread (4893 N. Broadway)		2000		2000	2		1	1	Catagory 3 - Medium	1				
Panera Bread (2000 Cumberland)		1000		1000	1			1	Catagory 3 - Medium					
Papa John's Pizza (2901Tazewell)		40	40		1			1	Catagory 3 - Medium					
Papa John's Pizza (5617 Western)		40	40		1			1	Catagory 3 - Medium					
Papa John's Pizza (1819 Lake Ave.)		100	100		1			1	Catagory 3 - Medium					
Papa John's Pizza (7038 Kingston Pk.)		40	40		1			1	Catagory 3 - Medium					
Papa Murphy's Pizza (4409 Chapman)		40	40		1			1	Catagory 3 - Medium					
Papa Murphy's Pizza (5214 N. Broadway)		40	40		2		1	1	Catagory 3 - Medium					
Papa Murphy's Pizza (4801 Kingston Pk.)		40	40		2		1	1	Catagory 3 - Medium	1				
Papa Murphy's Pizza (6631 Clinton)		50	50		2		1	1	Catagory 3 - Medium					
Papermill Market & Deli	X	*-	*-		1	1			Category 4 - Low					New FSF, no food production at facility.
Parkridge Harbor		1500		1500	1			1	Catagory 3 - Medium					
Parkview Independent Living		1000		1000	2			2	Catagory 3 - Medium					
Patrick Sullivans Steakhouse	X	40	40		1			1	Catagory 4 - Low					Business is closed.
Pauline's	X	1000		1000	1			1	Catagory 4 - Low					Business is closed.
Paul's Oasis		40	40		1			1	Catagory 3 - Medium					
Payne Baptist Church		*-	40		3	1	2		Category 1 - Unacceptable					New FSF, is installing trap as part of kitchen remodeling.
Pee Wee's Diner	X	40	40		1			1	Category 4 - Low					Business is closed.
Pelancho's Mexican Grill		1000		1000	1			1	Catagory 3 - Medium					
Penn Station Subs		40	40		1			1	Catagory 3 - Medium					
Pero's on the Hill		1000		1000	2	1	1		Category 3 - Medium					

Pete's Coffee Shop		1500		1500	1			1	Catagory 3 - Medium					
Petro's Chili & Chips (800 S. Gay)	X	50	50		1			1	Catagory 4 - Low					Business is closed.
Petros Chili & Chips # 502 (7005 Kingston Pk.)		40	40		1			1	Catagory 3 - Medium					
Petros Chili & Chips #1 (7600 Kingston Pk.)		30	30		2		1	1	Catagory 3 - Medium					
Petros Chili & Chips #2 (3001 Knoxville Center)		40	40		2		1	1	Catagory 3 - Medium					
PF Changs China Bistro Inc.		1000		1000	1			1	Catagory 3 - Medium					
Phatz Sports Bar & Grill	X	1000		1000	1			1	Catagory 4 - Low					Business is closed.
Philippine Connection Carry Out		40	40		1			1	Catagory 3 - Medium					
Philippine Egg Roll Express		50	50		3			3	Catagory 3 - Medium					New FSF.
Pilot # 187 (100 Merchants)		40	40		1			1	Catagory 4 - Low					
Pilot # 244 (2218 Cumberland)		50	50		1			1	Category 4 - Low					
Pilot #217 (4800 N. Broadway)		40	40		1			1	Category 4 - Low					
Pilot #166 (4603 Chapman)		40	40		2		1	1	Category 3 - Medium	1				
Pilot # (3615 Sutherland)		40	40		1	1			Category 3 - Medium					New FSF.
Pilot (Western Ave.)	X	*-	*-		1	1			Category 4 - Low					New FSF. No food production at facility.
Pimentos	X	1500		1500	2		1	1	Catagory 4 - Low					Business is closed.
Pita Pit	X	1500		1500	1			1	Catagory 4 - Low					Business is closed.
Pizza Hut #12621 (212 Cedar Lane)		1000		1000	1			1	Catagory 3 - Medium					
Pizza Hut #12628 (5701 Western)		40	40		1			1	Catagory 3 - Medium					
Pizza Hut #12632 (2405 Chapman)		40, 30	40, 30		1			1	Catagory 3 - Medium					
Pizza Hut #13026 (7017 Kingston Pk.)		40	40		1			1	Catagory 3 - Medium					
Pizza Hut (5338 Millertown)		40	40		1			1	Catagory 3 - Medium					
Pizza Hut (4100 Asheville)		40	40		1			1	Catagory 3 - Medium					
Pizza Inn		1000		1000	2		1	1	Category 3 - Medium					New FSF.
Pizza Palace		50	50		1			1	Catagory 3 - Medium					
Pizza Plus		30	30		1			1	Catagory 3 - Medium					
Pleasant Ridge Elementary		1500		1500	1			1	Catagory 3 - Medium					
Plum Tree Restaurant		40, 40	40, 40		1			1	Catagory 3 - Medium					
Pond Gap Elementary		2000		2000	1			1	Catagory 3 - Medium					
Poulavah Hut		40	40		2	1	1		Category 3 - Medium					New FSF.
Preservation Pub		50	50		1			1	Catagory 3 - Medium				1	
Pride & Joy Children's Academy		40	40		1			1	Catagory 3 - Medium					
Prime Time		40	40		1	1			Category 4 - Low					New FSF.
Puleo's Grille (242 Morrell)		*1500, 1500		1500	1			1	Catagory 3 - Medium					
Puleo's Grille (110 Cedar Lane)		1500		1500	1			1	Catagory 3 - Medium					
Puleo's Grille (7224 Region)		1000		1000	1			1	Catagory 3 - Medium					
Pup's Pit BBQ		50	50		1			1	Catagory 3 - Medium					
Qdoba Mexican Grill		1500		1500	1			1	Catagory 3 - Medium					
Quaker Steak & Lube		1000		1000	2		1	1	Catagory 3 - Medium					
Quality Bakers		**200	200		2		1	1	Catagory 1 - Unacceptable	1				Is in process of installing new GI.
Quality Inn		40	40		1			1	Catagory 3 - Medium					
Quizno's Subs		20, 3000	20	3000	2		1	1	Category 4 - Low					FSF has exceeded sizing requirements.
Raceway		40	40		1	1			Category 3 - Medium				1	New FSF.
Rainbow Club West	X	20	20	1000	1			1	Catagory 4 - Low					Business is closed.
Rallys Hamburger	X	1000		1000	2		1	1	Catagory 4 - Low					Business is closed.
Ramada Inn		20	20		1			1	Catagory 3 - Medium					
Ramada Limited	X	*-	*-		1			1	Category 4 - Low					No food production at facility.
Ramsey's Restaurant		1500		1500	1			1	Category 3 - Medium					
Range House Restaurant		1000		1000	1			1	Category 3 - Medium					New FSF.
Rankin Restaurant		1000		1000	1			1	Catagory 3 - Medium					
Ray's ESG		1000		1000	1			1	Catagory 3 - Medium					
Red Fez Deli Express		20	20		1			1	Catagory 3 - Medium					
Red Lobster # 47 (8040 Kingston Pk.)		1500, 1500		2000	1			1	Catagory 3 - Medium					
Red Lobster #253 (305 Merchants)		1500		1500	1			1	Catagory 3 - Medium					
Red Onion Pizza & Sub		30	30		1			1	Catagory 3 - Medium					
Red Roof Inn (1315 Kirby Rd.)	X	1000		1000	1	1			Category 4 - Low					No food production at facility.
Red Roof Inn (Central Pike)	X	*-	*-		1			1	Category 4 - Low					No food production at facility.
Redemption Church	X	40	40		1			1	Category 4 - Low					No food production at facility.
Regal Cinemas (510 S. Gay)		50	50		1			1	Catagory 3 - Medium					
Regal Cinemas (7600 Kingston Pk.)		40, 40	40, 40		2		1	1	Catagory 3 - Medium					
Regal Downtown West 8		40	40		2		1	1	Category 3 - Medium				1	
Regal Theatre		14	14		3		2	1	Category 3 - Medium	1				
Regas Restaurant	X	2000		2000	2			2	Catagory 4 - Low					Business is closed.
Richard Yoakley Elementary School		200	200		1			1	Catagory 3 - Medium					
Rick's Place		1000		1000	2		1	1	Catagory 3 - Medium					
Ridgedale Alternative School		40	40		1			1	Catagory 3 - Medium					
Rita's Bakery (3023 Tazewell)		1000		1000	1			1	Category 4 - Low					
Rita's Water Ice		40	40		1			1	Category 3 - Medium					
Rite Stop Food Mart		40	40		1			1	Catagory 3 - Medium					
Ritta Elementary School		800		800	1			1	Category 3 - Medium					
Riverside Market		20	20		1			1	Category 4 - Low					
Rocky Hill Elementary		1000		1000	1			1	Catagory 3 - Medium					
Rocky Top Market		40	40		1			1	Catagory 3 - Medium					
Rogers & Sons Market and Deli		1000	60		1			1	Category 3 - Medium					

Romano's Macroni Grill		1000		1000	1			1	Catagory 3 - Medium					
Roosters		40, 40	40, 40		1			1	Catagory 3 - Medium					
Roundup Rest. & Ice Cream Parlor		40	40		1			1	Catagory 3 - Medium					
Roux Barb		50	50		2		1	1	Catagory 3 - Medium					
Royale Bar	X	*-	*-		1			1	Category 4 - Low					Business is closed.
Ruby Tuesday # 3131(2714 Chapman)	X	1500		1500	2		1	1	Category 4 - Low					Business is closed.
Ruby Tuesday # 3977 (7600 Kingston Pk.)	X	1500		1500	1			1	Category 4 - Low					Business is closed.
Ruby Tuesday #3767 (4834 N. Broadway)		1500		1500	1			1	Catagory 3 - Medium					
Ruby Tuesday #4155 (750 Brakebill)		1500		1500	1			1	Catagory 3 - Medium					
Ruby Tuesday's #4262 (6606 Clinton Hwy.)		1500		1500	1			1	Catagory 3 - Medium					
Rumorz	X	100, 40	100, 40		1			1	Category 4 - Low					Business is closed.
Runaway Shelter	X	*-	*-		1			1	Category 4 - Low					No food production at facility.
Ruth Chris Steakhouse		1000		1000	1			1	Catagory 3 - Medium					
Ryan's #154	X	1000		1000	1			1	Category 4 - Low					Business is closed.
S & S Cafeteria		200		1500	1			1	Category 2 - High					FSF has undersized GI.
S & W Grand Café	X	*6500		2000	2		1	1	Category 4 - Low					*FSF exceeded grease trap size requirement. Business is closed.
Sacred Heart Cathedral		2000		2000	2			2	Catagory 3 - Medium					
Saint Joseph School Cafeteria		1500		1500	1			1	Catagory 3 - Medium					
Salad Works		50	50		6	1	4	1	Category 3 - Medium					New FSF.
Salsarita's (5224 N. Broadway)		2000		2000	1			1	Catagory 3 - Medium					
Salsarita's (100 Jack Dance)		2000		2000	1			1	Catagory 3 - Medium					
Salvation Army Kitchen		1000		1000	1			1	Catagory 3 - Medium					
Sam & Andy's		30	30		1			1	Catagory 3 - Medium					
Sam E. Hill Elementary School		100, 50	100, 50		1			1	Catagory 3 - Medium					
Sam's Cafe		80	80		1			1	Catagory 1 - Unacceptable	1				**FSF is in enforcement.
Sam's Club # 6572 (2920 Knoxville Center)		2000, 50	50	2000	2		1	1	Catagory 3 - Medium	1				
Sam's Club #8256 (8435 Walbrook)		1500		1500	1			1	Catagory 3 - Medium					
Sam's Restaurant and Deli		60	60		1			1	Catagory 3 - Medium					
Sangria's Tapas Grill		75, 75	75, 75		1			1	Catagory 3 - Medium					
Sapphire Restaurant		40	40		1			1	Category 2 - High					FSF has idishwasher on internal. No space for external GI.
Sarah Moore Green Elementary		2000		2000	1			1	Catagory 3 - Medium					
Sargent Pepperoni's		50		1500	1	1			Category 1 - Unacceptable					**New FSF, is in enforcement, added dishwasher to exisisting internal trap.
Sarku (3001 Knoxville Center Dr.)		60			2		1	1	Catagory 3 - Medium					
Sarku (7600 Kingston Pike)		40, 40	40, 40		2		1	1	Catagory 3 - Medium					
Sassy Ann's		50	50		1			1	Catagory 3 - Medium					
Save A Lot (N. Broadway)		50	50		1			1	Catagory 3 - Medium					
Save A Lot (Holston Drive)		40,40	40,40		2		1	1	Category 3 - Medium					
Savelli's Deli		40	40		2		1	1	Catagory 3 - Medium					
Sawyer's (6914 Kingston Pk.)	X	1000		1000	1			1	Category 4 - Low					Business has closed.
Sbarro (3001 Knoxville Center)		40	40		4		3	1	Catagory 3 - Medium	1				
Sbarro's (7600 Kingston Pk.)		30	30		5		3	2	Catagory 3 - Medium	1				
Schofield Café	X	40	40		1			1	Catagory 4 - Low					Business is closed.
Scott's Deli and Ice Cream		20	20		1			1	Catagory 3 - Medium					
Scrugg's Real Pit Bar B Q		40	40		1			1	Catagory 3 - Medium					
Senior Citizen Home Assistance Service		*2500		1500	1			1	Category 4 - Low					*FSF has exceeded grease size requirement.
Senior Taco		50	50		1			1	Catagory 3 - Medium					
Sequoyah Elementary		1000		1000	1			1	Catagory 3 - Medium					
Sequoyah Grille		1500		1500	2	1		1	Category 3 - Medium					New FSF.
Serene Manor Hospital		1500		1500	1			1	Catagory 3 - Medium					
Seventeenth Street Market & Deli		30	30		1			1	Catagory 3 - Medium					
Sevier Heights Baptist Church	X	1000		1000	1			1	Category 4 - Low					No food production at facility.
Shalimar Indian Restaurant		100,100	100,100		1	1			Category 3 - Medium				2	New FSF.
Shannondale Assisted Living Center		**1000		2000	4		3	1	Category 1 - Unacceptable	1				**FSF is in enforcement.
Shannondale Elementary School		1500		1500	1			1	Catagory 3 - Medium					
Shannondale Health Care		1000, 1000		1000, 1000	1			1	Catagory 3 - Medium					
Shoney's (4410 Western)		1500		1500	1			1	Catagory 3 - Medium					
Shoney's #1 (4032 N. Broadway)		1500		1500	1			1	Catagory 3 - Medium					
Shoney's #4 (2612 Chapman)		1500		1500	1			1	Catagory 3 - Medium					
Shoneys #8 (4020 Rutledge)		1000		1000	1			1	Catagory 3 - Medium					
Shonos in the City		40	40		1			1	Catagory 3 - Medium					
Side Street Tavern	X	40	40		1			1	Catagory 4 - Low					Business is closed.
Silver Spoon The American Cafe		1000		1000	1			1	Catagory 3 - Medium					
Sista's & Sister's of Soul	X	40	40		2		1	1	Catagory 4 - Low					Business is closed.
Sitar Fine Indian Cuisine		1000		1000	1			1	Catagory 3 - Medium					
Skate Town USA		30	30		3		2	1	Category 4 - Low					
Smithwood Learning Center	X	*-	*-		2		1	1	Category 4 - Low					No food production at facility.
Smithwood Baptist Church	X	*-	*-		1	1			Category 4 - Low					No food production at facility.
Smokey's Sports Pub And Grill Lounge	X	30	30		1			1	Category 4 - Low					Business is closed.
Smoothie King (7702 Northshore)	X	40	40		1			1	Category 4 - Low					No food production at facility.
Snappy Tomato Pizza (Schaad Rd.)		50	50		1	1			Category 3 - Medium				1	New FSF.
Sobu Restaurant	X	1500		1500	2		2		Catagory 4 - Low					Business is closed.
Soccer Taco (6701 Kingston Pk.)		1000		1000	1			1	Catagory 3 - Medium					
Soccer Taco (#9 Market Square)		**2000, 40	40	2000	1			1	Catagory 1 - Unacceptable	1				**FSF is in enforcement.
Soho Cafe	X	**1000		1000	5		4	1	Category 1 - Unacceptable	1	1			**FSF is in enforcement. Business has closed.

Sonic # 4789 (2742 Schaad)		1500		1500	2			2	Catagory 3 - Medium					
Sonic (4515 Chapman)		1000		1000	1			1	Catagory 3 - Medium					
Sonic (5003 Millertown)		1500		1500	1			1	Catagory 3 - Medium					
Sonic (104 Cedar Lane)	X	1000		1000	1			1	Catagory 4 - Low					Business is closed.
Sonic (5103 N. Broadway)		1000		1000	2		1	1	Catagory 3 - Medium	1				
Sonic (3311 N. Broadway)		1000		1000	2			1	Catagory 3 - Medium					
Sonic (5722 Kingston Pk.)		1500		1500	1			1	Catagory 3 - Medium					
Soups and Scoops	X	40	40		1			1	Category 4 - Low					New FSF, business is closed.
South Bound		40	40		1			1	Catagory 3 - Medium					
South Knoxville Elementary		50, 50	50, 50		1			1	Catagory 3 - Medium					
South Knoxville Family Center	X	*	*		1			1	Category 4 - Low					Business is closed.
South-Doyle Middle School		1000		1000	1			1	Catagory 3 - Medium					
Southern Graces (810 Clinch)	X	50	50		1			1	Category 4 - Low					Business is closed.
South's Finest Chocolate		20	20		2			2	Category 2 - High					Undersized internal trap.
Speed Mart Deli	X	40	40		1			1	Category 4 - Low					No food production at facility.
Spring Hill Elementary		1000		1000	1			1	Catagory 3 - Medium					
St. John's Cathedral		1500		1500	1			1	Category 4 - Low					
St. Mary's Health System, Inc.		3000		3000	1			1	Catagory 3 - Medium					
Starbucks Coffee (116 Merchants)		1500		1500	1			1	Catagory 3 - Medium					
Starbucks Coffee (2017 Cumberland)		1500		1500	2		1	1	Catagory 3 - Medium					
Starbucks Coffee # 8536 (4924 Kingston Pk.)		1500		1500	1			1	Catagory 3 - Medium					
Starbucks Coffee #1 (501 Church)		40	40		1			1	Catagory 3 - Medium					
Starbucks Coffee (7803 Montvue Drive)		1500		1500	1			1	Catagory 3 - Medium					
Steak out #1 (7638 Kingston Pike)	X	40	40		1			1	Category 4 - Low					Business is closed.
Steak Out #2 (2038 N. Broadway)	X	40	40		1			1	Category 4 - Low					Business is closed.
Steamboat Sandwiches		40	40		1			1	Category 3 - Medium					
Stefano's Chicago Style Pizza		150	150		1			1	Catagory 3 - Medium	1				
Sterchi Elementary		1500		1500	1			1	Catagory 3 - Medium					
Still House Tavern		40	40		1	1			Category 2 - High					New FSF. Has dishwasher on internal.
Stir Fry Cafe		60, 30	60, 30		1			1	Catagory 3 - Medium					
Stop N' Go Market		30	30		1			1	Catagory 3 - Medium					
Strike & Spare Bowling Center (3315 N. Broadway)		40	40		1			1	Catagory 3 - Medium					
Strike & Spare Bowling Center (5700 Western)		40	40		1			1	Catagory 3 - Medium					
Subway (1325 N. Cherry)		40	40		1			1	Catagory 3 - Medium					
Subway (3317 Sutherland)		50	50		1			1	Catagory 3 - Medium					
Subway (4803 N. Broadway)		40	40		1			1	Catagory 3 - Medium					
Subway (8445 Walbrook)		1000		1000	1			1	Catagory 3 - Medium					
Subway # 12 (#25 Market Square)		30	30		1			1	Catagory 1 - Unacceptable	1				**FSF is in enforcement.
Subway # 15024 (6217 Riverview)		40	40		1			1	Catagory 3 - Medium					
Subway # 21 (7701 Northshore)		30	30		2		1	1	Catagory 3 - Medium	1				
Subway # 23 (314 Merchants)		40	40		1			1	Catagory 3 - Medium					
Subway # 25 (2734 Schaad)		40	40		1			1	Catagory 3 - Medium					
Subway # 4 (7327 Kingston)		40	40		1			1	Catagory 3 - Medium					
Subway #1559 (3105 Alcoa)		30	30		1			1	Catagory 3 - Medium					
Subway #16 (8605 Walbrook)		40	40		1			1	Catagory 3 - Medium					
Subway #1711 (5201 Kingston Pk.)		20	20		1			1	Catagory 3 - Medium					
Subway (4436 Western)		30	30		1			1	Catagory 3 - Medium					
Subway (2625 N. Broadway)		30	30		1			1	Catagory 3 - Medium					
Subway (2104 Cumberland)		40	40		1			1	Catagory 3 - Medium					
Subway (3708 Chapman)		40	40		1			1	Catagory 3 - Medium					
Subway (7300 Middlebrook)		40	40		2		1	1	Category 4 - Low					Building still being remodeled.
Subway (3001Knoxville Center)		30	30		2		1	1	Catagory 3 - Medium	1				
Subway (7600 Kingston Pk.)		40	40		1			1	Catagory 3 - Medium					
Subway (5501 Middlebrook)		40	40		1			1	Catagory 3 - Medium					
Sullivans at Rocky Hill		1000		1000	1			1	Catagory 3 - Medium					
Sun Spot		40	40		1			1	Catagory 3 - Medium					
Sunnyview School		500		500	1			1	Catagory 3 - Medium					
Super Dollar Discount Foods		1000		1000	1			1	Catagory 3 - Medium					
Super Mario		1500		1500	1			1	Catagory 3 - Medium					
Sutherland Deli		20	20		1			1	Catagory 3 - Medium					
Sweet Ce Ce's	X	30	30		2	1	1		Category 3 - Medium			1		New FSF. Business is closed.
Sysco Food Company		1000		1000	1			1	Catagory 3 - Medium					
Szechuan Garden		1000		1000	4		3	1	Catagory 1 - Unacceptable					FSF is replacing cracked GI.
T. J.'s Sports Bar & Grill	X	15	15		1			1	Catagory 4 - Low					Business is closed.
T.G.I. Friday's		1000		1000	2		1	1	Catagory 3 - Medium					
Taco Bell #16310 (2085 N. Broadway)		1000		1000	1			1	Catagory 3 - Medium					
Taco Bell #16498 (4854 N. Broadway)		1000		1000	1			1	Catagory 3 - Medium					
Taco Bell #20467 (6516 Walbrook)		1500		1500	4		2	2	Catagory 3 - Medium	1	1			
Taco Bell #20909 (7215 Strawberry Plains)		1000		1000	1			1	Catagory 3 - Medium					
Taco Bell #2302 (4413 Western)		1500		1500	1			1	Catagory 3 - Medium					
Taco Bell #2379 (1900 Cumberland)		1000		1000	1			1	Catagory 3 - Medium					
Taco Bell #4756 (6504 Chapman)		1000		1000	1			1	Catagory 3 - Medium					
Taco Bell #9575 (7414 Kingston Pk.)		1000		1000	1			1	Catagory 3 - Medium					
Taco Bell (5322 Millertown)		1000		1000	1			1	Catagory 3 - Medium					

Taco Bell (3001 Knoxville Center)	X	40	40		1			1	Catagory 4 - Low					Business is closed.
Taco Bell (7600 Kingston Pk.)		40	40		1			1	Catagory 3 - Medium					
Taco De Mexico	X	20	20		2			2	Category 4 - Low					Business has closed.
Taj Indian Restaurant	X	1500		1500	1	1			Category 4 - Low					Business has closed.
Tamal Express		40	40		3		2	1	Category 3 - Medium					New FSF.
Tammy and Mike's Fried Green Tomatoes	X	*-	*-		1			1	Category 4 - Low					No food production, event sevice truck.
Tangerine Japanese Cuisine		1500		1500	1	1			Category 3 - Medium				1	New FSF.
Tapatios Mexican Restaurant	X	40	40		2			2	Catagory 4 - Low					Business has closed.
Target		1500		1500	1			1	Category 3 - Medium					
Tate's Teenz & Tots (5304 Clinton Plaza Dr.)		75	75		1			1	Catagory 4 - Low					
Tate's Teenz & Tots (348 Castle St.)		*-	40		1	1			Category 1 - Unacceptable					**New FSF, is in enforcement.
TD Barbecue		40	40		1			1	Category 3 - Medium					
Teavana	X	50	50		1	1			Category 4 - Low					New FSF. No food production at facility.
Tekoa Lounge	X	*-	*-		1			1	Category 4 - Low					Business is closed.
Tennessee Grill	X	1500		1500	1			1	Category 4 - Low					Business is closed.
Tennessee Riverboat Company		50	50		1			1	Catagory 3 - Medium					
Tennessee School For The Deaf		200, 200	200, 200		2		1	1	Catagory 2 - High	1				Dishwasher on internal trap, will need to install GI in the future.
Tennessee Theatre		30	30		1			1	Catagory 3 - Medium					
Texas Roadhouse (120 Morrell)		1500		1500	1			1	Catagory 3 - Medium					
Texas Roadhouse #5 (3071 Kinzel)		1500		1500	1			1	Catagory 3 - Medium					
That Burger Joint		50	50		3	1	2		Category 3 - Medium					New FSF.
The Broker		1000		1000	1			1	Catagory 3 - Medium					
The Coop Café		40	40		1	1			Category 3 - Medium					New FSF.
The Crown & Goose Pub		1500		1500	3		2	1	Catagory 2 - High	1				GI maintenance issues.
The Cup		50	50		3		1	2	Category 3 - Medium	1				
The Edge of Knoxville		40	40		1	1			Category 3 - Medium				1	New FSF.
The French Market		50	50		1			1	Catagory 3 - Medium					
The Fresh Market		1500		1500	1			1	Catagory 3 - Medium					
The General Store Sub Express	X	30	30		1			1	Catagory 4 - Low					Business is closed.
The Grill at Highland Row		1500		1500	3	1	2		Category 3 - Medium	1			1	New FSF.
The Hill Restaurant		2000		2000	1			1	Category 4 - Low					
The Market	X	*-	*-		1	1			Category 4 - Low					No food production at facility.
The Orangery		1500		2000	8		7	1	Category 3 - Medium	1	1	1	1	**FSF is in enforcement. Replaced internal trap with 2000 GI.
The Original Freeze		20	20		1			1	Category 3 - Medium					
The Parlor (Chicamauga Avenue)	X	**-		1500	2		1	1	Category 4 - Low					FSF is still being remodeled. Not going to open.
The Parlor (Gay Street)	X	40	40		1			1	Category 4 - Low					Business closed.
The Pint House		30	30		2			2	Category 3 - Medium					New FSF.
The Plaid Apron		1500		1500	2	1		1	Category 3 - Medium				1	New FSF.
The Purada	X	1500		1500	1			1	Catagory 4 - Low					Business is closed.
The Relic	X	1500		1500	2			2	Category 4 - Low					Food catered in, until kitchen is built.
The Roaming Gnome Pub & Eatery		50, 50	50, 50		1			1	Category 2 - High					FSF has dishwasher on internal. No space for external GI.
The Shrimp Dock		1000		1000	1			1	Catagory 3 - Medium					
The Spice Rack	X	1000		1000	1			1	Catagory 4 - Low					Business is closed.
The Sugar Shack (Kingston Pike)	X	*-	*-		1			1	Category 4 - Low					Business is closed.
The Tin Roof		1000		1000	1			1	Catagory 3 - Medium					
The Upper Crust		30	30		2		1	1	Category 4 - Low					
The Valarium/Cider House	X	30	30		2			2	Category 4 - Low					No food production at facility.
The Well	X	40	40		1			1	Category 4 - Low					Facility remodeling and replacing old trap with new trap.
Three Brothers Pizza		40	40		2			2	Catagory 3 - Medium					
Three Ridges Golf Course		500		500	1			1	Catagory 3 - Medium					
Three Rivers Market		1500		1500	1	1			Category 3 - Medium				1	New FSF.
Time Out Deli Market		30	30		1			1	Catagory 3 - Medium					
Time Warp Tea Room		40	40		1			1	Category 4 - Low					
Time-Out Deli #2		40	40		1			1	Catagory 3 - Medium					
Toddy's Backdoor Tavern	X	*-	*-		1			1	Category 4 - Low					No food production at facility.
Tom & Barry's	X	1000		1000	1			1	Catagory 4 - Low					Business is closed.
Tomato Head Restaurant		80	80		1			1	Category 2 - High				1	FSF has installed larger internal trap. Has internal trap on dishwasher.
Tomo Japanese Restaurant (4877 N. Broadway)		1500		1500	1			1	Catagory 3 - Medium					
Tomo Japanese Restaurant (7315 Kinston Pk.)		40, 40	40, 40		1			1	Category 2 - High					FSF has internal traps and will need to install GI in future.
Townhouse Tavern	X	*-	*-		1	1			Category 4 - Low					New FSF, Business is closed.
Tracy's Restaurant		80, 60			1			1	Catagory 3 - Medium					
Trino's	X	40	40		1			1	Catagory 4 - Low					Business is closed.
Trio Cafe		50	50		1			1	Catagory 3 - Medium					
Tropical Smoothie Café (8008 Kingston Pk.)		1000		1000	1			1	Catagory 3 - Medium					
Tropical Smoothie Cafe (4839 Kingston Pk.)		40	40		1			1	Category 3 - Medium					
Two Sister's Sandwiches and Sweets		40	40		1			1	Catagory 3 - Medium				1	
U.T. Bakery @ Presidential Hall		300		1000	1			1	Catagory 3 - Medium					
U.T. Hess Hall KFC Express		40	40		2		1	1	Catagory 3 - Medium	1				
U.T Hospital		3000, 3000		2000, 2000	1			1	Catagory 3 - Medium					
U.T. Mable's Cafe		1500		1500	1			1	Catagory 3 - Medium					
U.T. Morrill Hall		1000		1000	1			1	Catagory 3 - Medium					
U.T. Presidential Court		3000, 1000		2000	1			1	Catagory 3 - Medium					
U.T. Strong Hall		3000, 1500		3000, 1500	1			1	Catagory 3 - Medium					
U.T. Student University Center		*6000		4000	1			1	Catagory 3 - Medium					*FSF has exceeded grease trap size requirement.

U.T. Thompson Boling Arena		3000		3000	1			1	Catagory 3 - Medium					
U.T. Varsity Inn		1500		1500	1			1	Catagory 3 - Medium					
U.T. Welcome Center		1500		1500	1			1	Category 3 - Medium					FSF has started cooking in kitchen.
Union Jacks	X	*-	*-		1			1	Category 4 - Low					No food production at facility.
Urban Bar & Corner Cafe		60	60		1			1	Catagory 3 - Medium					
Veg-O-Rama Restaurant	X	80, 50	80, 50		2		1	1	Category 4 - Low					Business is closed.
Vic & Bill's Deli (3553 N. Broadway)		40	40		1			1	Catagory 3 - Medium					
Victory View Bapt. Church	X	*-	*-		1			1	Category 4 - Low					Showed in SSO query, no food production at facility.
Village Bakery		40	40		1			1	Catagory 3 - Medium					
Vine Middle Magnet		1000		1000	1			1	Catagory 3 - Medium					
Vol Market #3		100		100	1			1	Catagory 3 - Medium					
Volunteer Ministries	X	1500		1500	1			1	Catagory 4 - Low					No food production at facility.
Waffle House # 293 (6230 Papermill)		2000		2000	1			1	Catagory 3 - Medium					
Waffle House # 447 (5416 Asheville)		1000		1000	1			1	Catagory 3 - Medium					
Waffle House #1105 (7414 Strawberry Plains)		1000		1000	1			1	Catagory 3 - Medium					
Waffle House #766 (119 Cedar Lane)		1000		1000	1			1	Catagory 3 - Medium					
Wallace Memorial Baptist Church		150, 150	150, 150		1			1	Catagory 3 - Medium					
Wal-Mart # 2065 (8445 Walbrook)		1500		1500	1			1	Catagory 3 - Medium					
Wal-Mart # 2310 (3051 Kinzel Way)		2000		2000	1			1	Catagory 3 - Medium					
Walter P. Market & Deli	X	20	20		2		1	1	Category 3 - Medium					No food production at facility.
Wasabi Japanese Steak House		1500		1500	1			1	Catagory 3 - Medium					
Washington Pike Methodist Church		500		500	1			1	Catagory 3 - Medium					
Weigel's (300 Cedar Lane)	X	40	40		1	1			Category 4 - Low					No food production at facility.
Weigel's (5904 Washington Pk.)		*1000	40		1			1	Category 4 - Low					*FSF has exceeded grease trap size requirement.
Weigel's (3900 Pleasant Ridge)		40	40		2		1	1	Catagory 3 - Medium	1				
Weigel's #12 (5621 Western)		40	40		1			1	Category 4 - Low					
Weigel's (1700Merchants)		40	40		1	1			Category 4 - Low				1	New FSF.
Weigles # 43 (4750 Middlebrook)		30	50		1			1	Category 2 - High					FSF has smaller internal than required.
Wendy's # 12 (3000 N. Broadway)		1000		1000	1			1	Catagory 3 - Medium					
Wendy's # 13 (1806 Cumberland)		1000		1000	1			1	Catagory 3 - Medium					
Wendy's # 24 (7407 Strawberry Plains)		1000		1000	1			1	Catagory 3 - Medium					
Wendy's # 31 (8305 Kingston Pk.)		1000		1000	1			1	Catagory 3 - Medium					
Wendy's # 34 (4407 Western)		1000		1000	1			1	Catagory 3 - Medium					
Wendy's # 41 (6201 Asheville)		1000		1000	1			1	Catagory 3 - Medium					
Wendy's #28 (2904 Knoxville Center)		1000		1000	1			1	Catagory 3 - Medium					
Wendy's #4 (2401 Chapman)		1500		1500	1			1	Catagory 3 - Medium					
West Haven Elementary		2000		2000	1			1	Catagory 3 - Medium					
West High School		*3000		2000	1			1	Catagory 3 - Medium					*FSF has exceeded grease trap size requirement.
West Hills Baptist Church		50	50		1			1	Catagory 3 - Medium					
West Hills Elementary		1000		1000	1			1	Catagory 3 - Medium					
West Lonsdale Baptist Church		1000		1000	2			2	Category 4 - Low					
West Town Mall		1000		1000	3		2	1	Catagory 3 - Medium					
West View Elementary		1000		1000	1			1	Catagory 3 - Medium					
Westside Learning Center	X	*-	*-		1			1	Category 4 - Low					No food production at facility.
Westside YMCA	X	*-	*-		1			1	Category 4 - Low					No food production at facility.
Whassup Dog		40	40		2		1	1	Category 3 - Medium					
Whittle Springs Golf Club Snack Bar		20	20		1			1	Category 4 - Low					
Whittle Springs Middle School		1500		1500	1			1	Category 3 - Medium					
Williams and Sonoma		50	50		3		2	1	Catagory 3 - Medium					
Wing Zone		1500		1500	2		1	1	Catagory 3 - Medium					
Wishbones (6913 Kingston Pk.)		1000		1000	2		1	1	Catagory 3 - Medium					
Wishbones # 2 (2701 Magnolia)		1000		1000	1			1	Catagory 3 - Medium					
Wishbones (4808 Clinton Hwy.)		1000		1000	1			1	Catagory 3 - Medium					
Wok Chow		1500		1500	2	1	1		Category 3 - Medium				1	New FSF.
Wok Hay (5018 Kingston Pk.)	X	2000		2000	1			1	Catagory 4 - Low					Business is closed.
Wok Hay (120 Merchants)		*1500, 1500, 1500		2000	1			1	Catagory 3 - Medium					*FSF has exceeded grease trap size requirement.
Wok-N-Roll		1000		1000	2			2	Catagory 3 - Medium					
Wood Smith Market and Deli		40	40		2	1	1		Category 3 - Medium				1	New FSF.
Woodland Mart and Deli		40	40		2			2	Catagory 3 - Medium					
Wright's Cafeteria		40, 40	40, 40		1			1	Catagory 3 - Medium					
Yoma Tora		30	30		1			1	Catagory 3 - Medium					
Young Star	X	30	30		1			1	Catagory 4 - Low					No food production at facility.
YWCA		40	40		2		1	1	Category 4 - Low					
Zaxby's Restaurant		1500		1500	1			1	Catagory 3 - Medium					
Totals					1328	87	247	994						
					Total Inspections	Initial Inspections	Follow up Inspections	Trap Inspections						
									50	6	1	50		
									Enforcement NONC Letter	Enforcement NOV Letter	Enforcement SNC letter	Trap Installed		

Date	Address	SSO	Building Backup	Grease	Grease & Roots	Grease & Debris	Grease & I & I	Grease, Roots & Debris	Customers in Area	Letters Mailed	* Cans, Bags Mailed	Residential Only	Residential Commercial	# of Feet Cleaned	Blockage Abatement Frequency (Months)	Comments
1/7/2011	2526 East Fifth Avenue (Lateral Cleanout) Residential and Commercial SSO	Yes		Yes					8	8	6		Yes	269	12	
1/8/2011	2726 Wilson Avenue (MH 8-1) Residential and Commercial SSO	Yes		Yes					229	229	225		Yes	155	12	
1/12/2011	3822 Nerva Road (17-78) Residential SSO	Yes							270	270	270	Yes		155	18	
2/15/2011	2236 Martin Luther King Jr. Ave. (MH 6-154) Residential and Commercial SSO	Yes		Yes					121	121	113		Yes	189	6	
2/16/2011	512 Flenwood Way (MH 61) Residential and Commercial SSO	Yes			Yes				462	462	430		Yes	135	6	
2/17/2011	850 Tally Ho Drive (MH 62-21) Residential and Commercial SSO	Yes			Yes				60	-	-		Yes	60	9	Customers in this area received cans, bags and educational materials in association with the SSO at 512 Flenwood Way on 2/16/2011.
2/23/2011	1932 Old Amherst Road (Lateral Cleanout) residential and Commercial SSO	Yes		Yes					58	58	55		Yes	0	0	Follow up CCTV data did not reveal grease, so no BA added.
2/24/2011	1204 Pickwick Road (Lateral Cleanout) Residential SSO	Yes		Yes					4	4	4	Yes		200	12	
2/25/2011	1124 Delaware Avenue (MH 21-53) Residential and Commercial SSO	Yes			Yes				46	46	45		Yes	338	6	
2/28/2011	3218 Avondale Avenue (MH 22-23) Residential SSO	Yes				Yes			37	37	37	Yes		395	12	
3/7/2011	243 Gilbert Lane (Lateral Cleanout) Residential SSO	Yes					Yes		74	74	74	Yes		236	6	
3/12/2011	1218 Glade Hill Drive (MH 30-50 & 30-52) Residential SSO	Yes	Yes						229	229	229	Yes		421	12	
4/24/2011	3901 Bonnie View Avenue (MH 74-8) Residential SSO	Yes			Yes				2	2	2	Yes		272	6	
5/9/2011	2639 Louise Avenue (MH 5-1) Residential SSO	Yes				Yes			7	7	7	Yes		83	12	
6/2/2011	1216 Glenoaks Drive (Lateral Cleanout) Residential SSO	Yes						Yes	7	7	7	Yes		350	12	
7/7/2011	800 Graves Street (MH 31) Residential SSO	Yes				Yes			134	134	134	Yes		264	3	
9/7/2011	2111 Mohawk Avenue (MH 4-2) Residential and Commercial SSO	Yes		Yes					398	398	391		Yes	140	12	
11/6/2011	1708 Pinetree Lane (Lateral Cleanout) Residential SSO	Yes			Yes				5	5	5	Yes		207	12	
11/12/2011	1017 Andes Road (MH 72-152) Residential SSO	Yes		Yes					4	4	4	Yes		135	12	
11/23/2011	5525 Lonas Drive (MH 9-21) Residential and Commercial SSO	Yes		Yes					17	17	14		Yes	301	12	
12/4/2011	3319 Fountain Park Blvd. (MH 72) Residential SSO	Yes				Yes			28	28	28	Yes		411	12	
Totals									2200	2140	2080					

	Date	Event	Location	Cans/Spatulas Given Away
1	22-Feb-11	KCDC monthly meeting	KCDC Offices	16
2	12-Mar-11	Knox Housing Partnership	Knox Housing Partnership	10
3	15-Mar-11	KCDC Housing Complex	Cagle Terrace	93
4	21-Mar-11	KCDC Housing Complex	Lee Williams Complex	48
5	9-Apr-11	Knox Housing Partnership	Knox Housing Partnership	10
6	9-May-11	KCDC Housing Complex	Northgate Terrace	78
7	4-May-11	Knox Housing Partnership	Knox Housing Partnership	10
8	11-Jun-11	Knox Housing Partnership	Knox Housing Partnership	9
9	9-Jul-11	Knox Housing Partnership	Knox Housing Partnership	9
10	11-Jul-11	Urban League	Urban League	30
11	13-Aug-11	Knox Housing Partnership	Knox Housing Partnership	15
12	8-Sep-11	KUB Business Education Series	KUB Hoskins Operations Center	10
13	9-Sep-11	KCDC Housing Complex	Virginia Walker Apartments	25
14	17-Sep-11	Knox Housing Partnership	Knox Housing Partnership	10
15	3-Oct-11	Knox Housing Complex	Love Towers	250
16	22-Oct-11	Knox Housing Partnership	Knox Housing Partnership	16
17	12-Nov-11	Knox Housing Partnership	Knox Housing Partnership	14
Total cans/spatulas given out				653

Appendix B

Pump Station
Maintenance Activities and Schedule

SMSP 2011

FACILITY & EQUIPMENT UPGRADES

1. SCADA upgrades and improvements at various facilities - Ongoing
2. Lake Forest Station installation – Complete
3. Hanover Pump Station replacement – Complete
4. Meadow Oaks Pump Station replacement – Complete
5. Queensbury Pump Station pump upgrade – Complete
6. John Sevier Pump Station improvements – Complete
7. Burlington Pump Station pump upgrade – Complete
8. Kohls Pump Station pump upgrade – Complete
9. Jones Street Pump Station grinder upgrade - Complete
10. Sea Ray Pump Station replacement – To be completed in 2012
11. Amherst Pump Station replacement – To be completed in 2012
12. Southside Pump Station replacement – To be completed by 2012
13. Pelham Pump Station replacement – To be completed in 2012
14. Pilleaux Road Pump Station replacement – To be completed in 2012
15. Chapman Highway Pump Station replacement – To be completed in 2012
16. Cruze Pump Station replacement – To be completed in 2012
17. Duncans Glen Pump Station pump replacement – To be completed 2012

NEW FACILITY INSTALLATIONS

1. Lake Forest Pump Station installation – Brought online February 2011

SYSTEM STUDIES

1. SCADA System and Communication protocol study – Ongoing

FACILITY INSPECTIONS

1. 31 Routine facility inspections performed in 2011
2. 969 Preventive Maintenance scheduled facility inspections performed in 2011

OUTSIDE SUPPORT

1. SMSP has performed 62 pump efficiency tests at various facilities for capacity assurance and flow monitoring purposes. SMSP has provided CDM with efficiency test data from various facilities for modeling purposes.
2. SMSP maintains 18 flow meters and uses these meters for various purposes. SMSP has provided CDM with flow meter data from various facilities for modeling purposes.
3. System Operations SCADA maintains a run-time archive for Wastewater Pump Stations. This information is pulled from the SMSP maintained SCADA system as it pertains to pump stations. Various facility run-time data continues to be provided to CDM for modeling purposes.

SMSP Preventive/Predictive Maintenance Activities and Frequencies

<u>Standard</u> <u>Job</u>	<u>Standard Job Description</u>	<u>Frequency</u> <u>(In days)</u>
RSGN	General Inspection	varies
RSFAC	Facility Inspection - Wastewater	3.5 - 7
RSCRA	Crane Inspection - annual	365
RSMML	Milltronics Inspection	180
RSMMLC	Motor control/electrical inspection	365
RSLASI	Alarm status (SCADA) inspection	180
RSFM	Flowmeter inspection	180
RSBSI	Facility Inspection - Water	3.5 - 7
RSBPV	Back flow preventer inspection	365
RSCRH	Crane inspection - routine	90
RSEP	Electric panel inspection	365
RSSS	Soft starter inspection	365
RSACMP	Air compressor inspection	180
RSVFD	VFD Inspection	365
RSMME	Muffin monster inspection	365
RSODOR	Mercaptan injector inspection	30
RSPM1	Pump inspection - Wastewater	180
RSPM2	Sump pump inspection	180
RSCC	Climate control inspection (Heaters/fans)	180
RSML	Motorized louver inspection	365
RSDHM	Dehumidifier inspection	365
RSLER	Emergency lights inspection - monthly	30
RSELA	Emergency lights inspection - annual	365
RSPM3	Belt drive pump inspection - 6 mos.	180
RSBDPA	Belt drive pump inspection - annual	365
RSGNPM	Generator inspection	90
RSCFI	Chemical feed inspection	30
RSLET	Pump efficiency testing - Wastewater	365
RSPMP4	Pump inspection - Water	180
RSWDPC	DP Cell inspection	180
RSWCPC	CL2 & PH Analyzer Calibration	180
RSGRIN	Annual inspection - Gas	365
RSLS	Leak survey - Gas	365
RSPTC	Transducer calibration	365
RSOS	Odorant sampling	30
RSFMM	H2S / PH monitoring	30
RSLVA / RSBVA	Vibration analysis	90
RSCTC / RSBTC	Thermography check	540 days
RSMRC	Master radio inspection	365
RSMR	Meter Readings/charts	3.5 - 7
RSGAS	Alarm status (SCADA) inspection - Gas	365
RSGGV	Grease valves - Gas	365
RSWAS	Alarm status (SCADA) inspection - Water	180
RSGFI	Site inspection - Gas	90
RSGNA	Generator inspection - annual	365
RSWWI / RSCWI	Winterize station - Water / Wastewater	365
RSGWI	Winterize station - Gas	365

Appendix C

Summary Table of Pumps Stations Using Chemical Injection and Odor Control

KUB Wastewater Facility Chemical Feed System Information (2011 Update)

CHEMICAL INJECTION

<u>Facility</u>	<u>Address</u>	<u>Odor control type</u>	<u>Chemical Name</u>	<u>Comments</u>
Ball Road	4923 Ball Road	Chemical injection	Oxy-Six	
Boyd's Bridge SuperOx	3818 Boyd's Bridge Pike	Chemical injection	Oxygen	
Easton Meadows	7224 Rising Road	Chemical injection	Calcium Hypochlorite	
Eastwood	740 Bagwell Lane	Chemical injection	Oxy-Six	
Ellistown	1909 Ellistown Road	Chemical injection	Oxy-Six	
Forks of the River	5051 National Drive	Chemical injection	Oxy-Six	
Forks SuperOx	5051 National Drive	Chemical injection	Oxygen	
Gazebo	3516 Ginn Drive	Chemical injection	Oxy Six	
Governors Landing	5400 Garden Crest Trail	Chemical injection	Oxy-Six	
Holston Hills	4800 River Place Drive	Chemical injection	Oxy Six	
Kohls	5312 Washington Pike	Chemical injection	Calcium Hypochlorite	
Maloneyville	4800 Maloneyville Road	Chemical injection	Oxy-Six	
Neubert Springs	5941 Neubert Springs	Chemical injection	Oxy-Six	
Power Park	3180 Power Drive	Chemical injection	Oxy-Six	
Roberts Road	5300 Roberts Road	Chemical injection	Calcium Hypochlorite	
Shiptown	2124 Shiptown Road	Chemical injection	Oxy-Six	
Ten Mile	757 Ebenizer Road	Chemical injection	Oxy-Six	
Walker Springs	310 Broome Road	Chemical injection	Oxy-Six	
Washington Pike	8515 Washington Pike	Chemical injection	Oxy-Six	
Wayland Road	1900 Wayland Road	Chemical injection	Oxy-Six	
Woodlands	1045 Tree Top Way	Chemical injection	Calcium Hypochlorite	
Woodson Drive	2416 Woodson Drive	Chemical injection	Oxy-Six	

ON-SITE ODOR CONTROL

Ball Road	4923 Ball Road	Charcoal scrubber	Purafill Media	
Casa Bella	4633 Bella Capri Lane	Charcoal scrubber	Purafill Media	
Chestnut Ridge	8009 Chestnut Hill Lane	Charcoal scrubber	Purafill Media	
Clinton Highway	6564 Clinton Highway	Charcoal scrubber	Purafill Media	
Duncan Glen	6742 Duncan Road	Charcoal scrubber	Bay Products Media	
Easton Meadows	7224 Rising Road	Charcoal scrubber	Purafill Media	
Ellistown	1909 Ellistown Road	Charcoal scrubber	Bay Products Media	
Gazebo	3516 Ginn Drive	Charcoal scrubber	Purafill Media	
Ginnbrooke	2907 Ginnbrooke Lane	Charcoal scrubber	Bay Products Media	
Governors Landing	5400 Garden Crest Trail	Charcoal scrubber	Bay Products Media	
Harrison Keepe	2122 Houser Road	Charcoal scrubber	Bay Products Media	
Lower First Storage	1502 N. Sixth Avenue	Charcoal scrubber	Bay Products Media	
Millertown	5800 Millertown Pike (Vincinda Cir)	Charcoal scrubber	Purafill Media	
Riverview Park	3221 Holston Hills Road	Charcoal scrubber	Bay Products Media	
Roberts Road	5300 Roberts Road	Charcoal scrubber	Bay Products Media	
Third Creek Storage	4505 Middlebrook Pike	Charcoal scrubber	Bay Products Media	
Three Points	8530 Three Points Road	Charcoal scrubber	Purafill Media	
Upper First Storage	4719 Old Broadway	Charcoal scrubber	Bay Products Media	
Walker Springs	310 Broome Road	Charcoal scrubber	Bay Products Media	
Walker Springs Storage	608 Walker Springs Road	Charcoal scrubber	Bay Products Media	
Washington Pike	8515 Washington Pike	Charcoal scrubber	Bay Products Media	
Woodlands	1045 Tree Top Way	Charcoal scrubber	Bay Products Media	
Woodson Drive	2416 Woodson Drive	Charcoal scrubber	Purafill Media	



Form: Wastewater Odor Control System Values

Core Process: SMSP Preventive Maintenance

Department: System Operations, 81

Owner: SMSP Supervisor

Document Status: Issued

Approved by: Brad Brummett

Issued Date: 11/22/2010

Facility _____ Date _____

Inspected By: _____

Perform the odor control system sampling in the order listed below and then coordinate with the wastewater system team lead on the results obtained in order to determine if adjustments need to be made.

Terminal Manhole Nitrate (Water Sample)

Results (PPM): _____

Terminal Manhole Hydrogen Sulfide (Water Sample)

Results (PPM): _____

Terminal Manhole pH (Water Sample)

Results (PPM): _____

Chemical Feed Pump Draw Down

Results (GPD): _____

Chemical Storage Tank Level

Results (Feet): _____

Air Scrubber Hydrogen Sulfide (Air Sample)

Results (PPM): _____

Exchange Media: ☐ Yes ☐ No ☐ Further Evaluation

Comments: _____

Appendix D

Pump Station and Storage Facility Sample Inspection Checklists

Checklist: Wastewater Lift Station Inspection

Core Process: SMSP Preventive Maintenance

Department: System Operations, 81

Owner: SMSP Supervisor

Document Status: Issued

Approved by: Brad Brummett

Issued Date: 6/3/2009

Facility name _____ Date _____

Performed by _____

Preventive maintenance work order _____

Quarterly detailed inspection ☐ Annual performance inspection ☐

Tip This checklist can be used as a guide for monthly inspections but is not required to be completed while conducting a monthly inspection.

► **To complete a wastewater lift station maintenance inspection, check the following areas or equipment:**

NA

- ☐ 1. Grinder Well and Screen Room
- | | |
|--|--|
| <input type="checkbox"/> Hatches and safety grating | <input type="checkbox"/> Milltronics card updates (annual insp only) |
| <input type="checkbox"/> Entrance door(s) and locking mechanisms | <input type="checkbox"/> Walking surfaces |
| <input type="checkbox"/> Hydraulic equipment | <input type="checkbox"/> Lighting |
| <input type="checkbox"/> Slide gate(s) or valve(s) | <input type="checkbox"/> Ventilation |
| <input type="checkbox"/> Actuator(s) | <input type="checkbox"/> Float switches(s) – dry well and wet well |
| <input type="checkbox"/> Guide rail(s) or lifting mechanisms | <input type="checkbox"/> Cleanliness |
| <input type="checkbox"/> Level transmitter(s) | <input type="checkbox"/> Fall safety device |
| <input type="checkbox"/> Grinder #1: run time: _____ | |
| <input type="checkbox"/> Grinder #1 amperage reading: A (phase)_____ B (phase)_____ C (phase)_____ | |
| <input type="checkbox"/> Grinder #2: run time: _____ | |
| <input type="checkbox"/> Grinder #2 amperage reading: A (phase)_____ B (phase)_____ C (phase)_____ | |
- ☐ 2. Wet Well and Pump Room
- | | |
|--|--|
| <input type="checkbox"/> Hatches and safety grating | <input type="checkbox"/> Submersible pressure transducer |
| <input type="checkbox"/> Entrance door(s) and locking mechanisms | <input type="checkbox"/> Milltronics card updates (annual insp only) |
| <input type="checkbox"/> Slide gate(s) or valve(s) | <input type="checkbox"/> Lighting |
| <input type="checkbox"/> Guide rail(s) or lifting mechanisms | <input type="checkbox"/> Ventilation |
| <input type="checkbox"/> Walking surfaces | <input type="checkbox"/> Cleanliness |
| <input type="checkbox"/> Float switches(s) – dry well and wet well | <input type="checkbox"/> Sump pump(s) and check valve(s) |
| <input type="checkbox"/> Fall safety device | <input type="checkbox"/> Pressure instrumentation |
| <input type="checkbox"/> Actuator(s) | <input type="checkbox"/> Static pressure _____ |
| <input type="checkbox"/> Level transmitter(s) | <input type="checkbox"/> Piping and drainage |

NA

- ☐ Pump Efficiency Test (Note Perform flow meter test in conjunction with the pump efficiency test.)
- ☐ Pump #1: run time: _____
- ☐ Pump #2: run time: _____
- ☐ Pump #3: run time: _____
- ☐ Pump #4: run time: _____
- ☐ Motor #1 amperage reading: A (phase)_____ B (phase)_____ C (phase)_____
- ☐ Motor #2 amperage reading: A (phase)_____ B (phase)_____ C (phase)_____
- ☐ Motor #3 amperage reading: A (phase)_____ B (phase)_____ C (phase)_____
- ☐ Motor #4 amperage reading: A (phase)_____ B (phase)_____ C (phase)_____
- ☐ Check valve(s)

☐ 3. Valve Vault or Pump Room Valving

- | | |
|---|---|
| <input type="checkbox"/> Hatches and safety grating | <input type="checkbox"/> Ventilation |
| <input type="checkbox"/> Isolation valve(s) | <input type="checkbox"/> Cleanliness |
| <input type="checkbox"/> Air release valve(s) | <input type="checkbox"/> Check valve(s) |
| <input type="checkbox"/> Sump pump(s) and check valve(s) | <input type="checkbox"/> Pressure instrumentation |
| <input type="checkbox"/> Walking surfaces | <input type="checkbox"/> Static pressure _____ |
| <input type="checkbox"/> Float switches(s) – dry well or wet well | <input type="checkbox"/> Dynamic pressure _____ |
| <input type="checkbox"/> Fall safety device | <input type="checkbox"/> Piping and drainage |
| <input type="checkbox"/> Lighting | |

☐ 4. Effluent Meter - Vault

- | | |
|---|--|
| <input type="checkbox"/> Hatches and safety grating | <input type="checkbox"/> Ventilation |
| <input type="checkbox"/> Isolation valve(s) | <input type="checkbox"/> Cleanliness |
| <input type="checkbox"/> Sump pump(s) and check valve(s) | <input type="checkbox"/> Piping and drainage |
| <input type="checkbox"/> Walking surfaces | <input type="checkbox"/> Flow meter and signal converter |
| <input type="checkbox"/> Float switches(s) – dry well or wet well | <input type="checkbox"/> Effluent meter totalizer: _____ |
| <input type="checkbox"/> Lighting | |

☐ 5. Odor Control

- | | |
|---|--|
| <input type="checkbox"/> Chemical feed enclosure and components | <input type="checkbox"/> Chemical feed building |
| <input type="checkbox"/> Chemical storage containment | <input type="checkbox"/> Chemical feed piping and valve(s) |
| <input type="checkbox"/> Chemical feed tank: level (ft.)_____ | <input type="checkbox"/> Carbon vessel and media sample (air scrubber) |
| <input type="checkbox"/> Chemical feed rate: gallons/day_____ | <input type="checkbox"/> Eyewash Station |
| <input type="checkbox"/> Terminal manhole monitoring:
Nitrate_____ | |
| Hydrogen sulfide_____ | |
| pH_____ | |

NA

- ☐ 6. Electrical Building, Control Panel, SCADA Panel, and Related Equipment
 - ☐ SCADA panel
 - Note** Initiate this task when you first arrive, so you are testing the UPS unit while doing other tasks.
 - ☐ SCADA test log sheet (annual insp only)
 - ☐ Climate control
 - ☐ Emergency transfer switch
 - ☐ TVSS monitor (indication lights)
 - ☐ Lighting
 - ☐ Ventilation
 - ☐ Cleanliness
 - ☐ Motor control center components
- ☐ 7. Site Miscellaneous
 - ☐ Emergency lighting
 - ☐ Exterior lighting
 - ☐ Generator
 - ☐ Miscellaneous control panels
 - ☐ Security
 - ☐ Overhead crane
 - ☐ Signs and placards
 - ☐ Site aesthetics
 - ☐ Backflow preventer
 - ☐ Air compressor (s) – pressure vessels
 - ☐ Air compressor (s) – Control Setpoints Form
 - ☐ Air compressor (s) – Regulator Setpoints Form
 - ☐ Yard hydrant

Comments: _____

Important If any discrepancies are found, notify SMSP or appropriate personnel.



Form: Pump Efficiency Testing

Core Process: SMSP Preventive Maintenance

Department: Systems Operations, 81

Owner: SMSP Supervisor

Document Status: Issued

Approved by: Brad Brummett

Issued Date: 3/17/2004

Performed by _____ Date _____
Facility _____

1.0 WETWELL INFORMATION

(Length _____ x Width _____ x Depth _____) = Total Volume _____
(0.785 x Dia. _____ x Dia. _____ x Depth _____) = Total Volume _____
(Total Volume _____ x 7.48) = Total Gallons _____
(Total Gallons _____ / Depth _____) = Gallons per foot _____

Important Wetwell type depicts which volume formula to use (Cylindrical or Square/Rectangular).

2.0 TESTING

To complete this testing form, you must conduct three inflow measurements and three drawdown measurements that will be timed for one minute to obtain the most accurate data. When applicable, take readings from the Milltronics Level Control Unit when performing inflow and drawdown measurements.

If you are using a tape measure to obtain level readings, convert all inch readings to feet before completing the calculations.

2.1 INFLOW TESTING

To obtain the correct difference, record the second reading at the top.

Test 1		Test 2		Test 3	
Second	_____	Second	_____	Second	_____
Initial	_____	Initial	_____	Initial	_____
Difference	_____	Difference	_____	Difference	_____
Calculate the average of the 3 measurements _____					
Average inflow	_____	x	Gallons per ft	_____	= Inflow GPM _____

2.2 DRAWDOWN TESTING

2.2.1 Pump #1

To obtain the correct difference, record the second reading at the top.

Test 1		Test 2		Test 3	
Second	_____	Second	_____	Second	_____
Initial	_____	Initial	_____	Initial	_____
Difference	_____	Difference	_____	Difference	_____

GPM

Calculate the average of the 3 measurements _____

Avg drawdown _____ x Gals per ft _____ = Drawdown GPM _____

Drawdown GPM _____ + Inflow GPM _____ = Total pump capacity GPM _____

Pressure Readings (Discharge and Suction / Pump ON)

Pump ON discharge PSI reading _____ Pump ON suction PSI reading _____

Motor amperage readings

A Phase _____ B Phase _____ C Phase _____

2.2.2 Pump #2

To obtain the correct difference, record the second reading at the top.

Test 1		Test 2		Test 3	
Second	_____	Second	_____	Second	_____
Initial	_____	Initial	_____	Initial	_____
Difference	_____	Difference	_____	Difference	_____

GPM

Calculate the average of the 3 measurements _____

Avg drawdown _____ x Gals per ft _____ = Drawdown GPM _____

Drawdown GPM _____ + Inflow GPM _____ = Total pump capacity GPM _____

Pressure Readings (Discharge and Suction / Pump ON)

Pump ON discharge PSI reading _____ Pump ON suction PSI reading _____

Motor amperage readings

A Phase _____ B Phase _____ C Phase _____

2.2.3 Pump Combination

Pumps involved _____

Test 1		Test 2		Test 3	
Second	_____	Second	_____	Second	_____
Initial	_____	Initial	_____	Initial	_____
Difference	_____	Difference	_____	Difference	_____

GPM

Calculate the average of the 3 measurements _____

Avg drawdown _____ x Gals per ft _____ = Drawdown GPM _____

Drawdown GPM _____ + Inflow GPM _____ = Total pump capacity GPM _____

Pressure Readings (Discharge and Suction / Pump ON)

Pump ON discharge PSI reading _____ Pump ON suction PSI reading _____

Motor amperage readings

A Phase _____ B Phase _____ C Phase _____

2.3 ADDITIONAL DRAWDOWN TESTING

If a facility has more than two pumps, use this section of the form to log the test results for the additional drawdown tests.

2.3.1 Pump #3

Test 1		Test 2		Test 3	
Second	_____	Second	_____	Second	_____
Initial	_____	Initial	_____	Initial	_____
Difference	_____	Difference	_____	Difference	_____

GPM

Calculate the average of the 3 measurements _____

Avg drawdown _____ x Gals per ft _____ = Drawdown GPM _____

Drawdown GPM _____ + Inflow GPM _____ = Total pump capacity GPM _____

Pressure Readings (Discharge and Suction / Pump ON)

Pump ON discharge PSI reading _____ Pump ON suction PSI reading _____

Motor amperage readings

A Phase _____ B Phase _____ C Phase _____

2.3.2 Pump #4

Test 1		Test 2		Test 3	
Second	_____	Second	_____	Second	_____
Initial	_____	Initial	_____	Initial	_____
Difference	_____	Difference	_____	Difference	_____

GPM

Calculate the average of the 3 measurements _____

Avg drawdown _____ x Gals per ft _____ = Drawdown GPM _____

Drawdown GPM _____ + Inflow GPM _____ = Total pump capacity GPM _____

Pressure Readings (Discharge and Suction / Pump ON)

Pump ON discharge PSI reading _____ Pump ON suction PSI reading _____

Motor amperage readings

A Phase _____ B Phase _____ C Phase _____

2.3.3 Pump Combination

Pumps involved _____

Test 1		Test 2		Test 3	
Second	_____	Second	_____	Second	_____
Initial	_____	Initial	_____	Initial	_____
Difference	_____	Difference	_____	Difference	_____

GPM

Calculate the average of the 3 measurements _____

Avg drawdown _____ x Gals per ft _____ = Drawdown GPM _____

Drawdown GPM _____ + Inflow GPM _____ = Total pump capacity GPM _____

Pressure Readings (Discharge and Suction / Pump ON)

Pump ON discharge PSI reading _____ Pump ON suction PSI reading _____

Motor amperage readings

A Phase _____ B Phase _____ C Phase _____

2.3.4 Pump Combination

Pumps involved _____

Test 1		Test 2		Test 3	
Second	_____	Second	_____	Second	_____
Initial	_____	Initial	_____	Initial	_____
Difference	_____	Difference	_____	Difference	_____

GPM

Calculate the average of the 3 measurements _____

Avg drawdown _____ x Gals per ft _____ = Drawdown GPM _____

Drawdown GPM _____ + Inflow GPM _____ = Total pump capacity GPM _____

Pressure Readings (Discharge and Suction / Pump ON)

Pump ON discharge PSI reading _____ Pump ON suction PSI reading _____

Motor amperage readings

A Phase _____ B Phase _____ C Phase _____



Checklist: Wastewater Storage Facility Inspection

Core Process: SMSP Preventive Maintenance

Department: System Operations, 81

Owner: SMSP Supervisor

Document Status: Issued

Approved by: Brad Brummett

Issued Date: 6/3/2009

Facility name _____ Date _____

Performed by _____

Preventive maintenance work order _____

Quarterly detailed inspection ☐ Annual performance inspection ☐

Tip This checklist can be used as a guide for monthly inspections but is not required to be completed while conducting a monthly inspection.

► **To complete a wastewater storage facility maintenance inspection, check the following areas or equipment:**

NA

- ☐ 1. Diversion Structure
 - ☐ Security
 - ☐ Hatches and safety grating
 - ☐ Slide gate(s) or valve(s)
 - ☐ Level transmitter (s)
 - ☐ Site aesthetics
 - ☐ Actuator(s)
 - ☐ Cleanliness
- ☐ 2. Grinder Well
 - ☐ Hatches and safety grating
 - ☐ Actuator(s)
 - ☐ Level transmitter(s)
 - ☐ Grinder #1: run time _____
 - ☐ Grinder #2: run time _____
 - ☐ Grinder #3: run time _____
 - ☐ Slide gate(s) or valve(s)
 - ☐ Guide rail(s) and lifting mechanisms
 - ☐ Cleanliness
- ☐ 3. Wet Well(s)
 - ☐ Hatches and safety grating
 - ☐ Actuator(s)
 - ☐ Level transmitter(s)
 - ☐ Pump #1: run time _____
 - ☐ Pump #2: run time _____
 - ☐ Pump #3: run time _____
 - ☐ Pump #4: run time _____
 - ☐ Pump #5: run time _____
 - ☐ Pump #6: run time _____
 - ☐ Sump Pump #1: run time _____
 - ☐ Sump Pump #2: run time _____
 - ☐ Slide gate(s) or valve(s)
 - ☐ Guide rail(s) and lifting mechanisms
 - ☐ Float switch(s) – high and/or low
 - ☐ Cleanliness

NA

- ☐ 4. Valve Vault
- ☐ Hatches and safety grating
 - ☐ Lighting
 - ☐ Ventilation
 - ☐ Isolation valve(s)
 - ☐ Air release valve(s)
 - ☐ Walking surfaces
 - ☐ Structures (catwalk)
 - ☐ Cleanliness
 - ☐ Entrance door(s) and locking mechanisms
 - ☐ Check valve(s)
 - ☐ Pressure instrumentation
 - ☐ Piping and drainage
- ☐ 5. Influent Meter Vault
- ☐ Hatches and safety grating
 - ☐ Lighting
 - ☐ Ventilation
 - ☐ Isolation valve(s)
 - ☐ Pressure Instrumentation
 - ☐ Cleanliness
 - ☐ Entrance door(s) and locking mechanisms
 - ☐ Influent meter totalizer_____
 - ☐ Flow meter and signal converter
 - ☐ Actuator(s)
 - ☐ Piping and drainage
 - ☐ Drain valve
 - ☐ Walking surfaces
- ☐ 6. Effluent Meter Vault
- ☐ Hatches and safety grating
 - ☐ Lighting
 - ☐ Ventilation
 - ☐ Isolation valve(s)
 - ☐ Cleanliness
 - ☐ Entrance door(s) and locking mechanisms
 - ☐ Effluent meter totalizer_____
 - ☐ Flow meter and signal converter
 - ☐ Actuator(s)
 - ☐ Piping and drainage
 - ☐ Drain valve
 - ☐ Walking surfaces
- ☐ 7. Odor Control
- ☐ LEL monitor(s)
 - ☐ Hydrogen sulfide monitor
 - ☐ Fan, dampers, louvers, and ductwork
 - ☐ Carbon vessel and media sample (air scrubber)
 - ☐ Magnehelic gauge: pressure drop_____
- ☐ 8. Electrical Building, Control Panel, SCADA Panel and Related Equipment
- ☐ SCADA panel
 - Note** Initiate this task when you first arrive, so you are testing the UPS unit while doing other tasks.
 - ☐ SCADA test log sheet (annual insp only)
 - ☐ Climate control
 - ☐ Emergency transfer switch
 - ☐ Grinder control panel(s)
 - ☐ TVSS monitor (indicator lights)
 - ☐ Lighting
 - ☐ Ventilation
 - ☐ Cleanliness
 - ☐ Motor control center components
- ☐ 9. Storage Tank
- ☐ Fall safety device
 - ☐ Handrail, hatches, & safety grating (annual only)
 - ☐ LEL monitor
 - ☐ Hydrogen sulfide monitor
 - ☐ Mixer #1: run time_____
 - ☐ Mixer #2: run time_____
 - ☐ Mixer #3: run time_____
 - ☐ Mixer #4: run time_____

NA

- ☐ Level transmitter(s)
 - ☐ Guide rail(s) and lifting mechanisms
 - ☐ Tank drain valve
 - Site Miscellaneous
 - ☐ Security
 - ☐ Backflow preventer
 - ☐ Exterior lighting
 - ☐ Miscellaneous control panels
 - ☐ Generator: run time _____
 - ☐ Sprinkler system components
 - ☐ Emergency lighting
 - ☐ Signs and placards
 - ☐ Site aesthetics

Comments:

[illegible]

Important If any discrepancies are found, notify SMSP or appropriate personnel.

Appendix E

Summaries of Changes Made to Other Consent Decree Programs

KUB performs annual reviews of programs approved by EPA to ensure they are up to date and being fully implemented. The most current version of all programs can be found on KUB's website in the Public Document Repository. Following are brief descriptions of changes made as a result of those reviews and the locations where they may be found in the actual documents.

Summary of changes made to the Emergency Response Plan (ERP)

1. Rankings of Emergency Response Levels were modified to match Homeland Security Levels. Now, Level 1 is the highest level (catastrophic emergencies) and Level 5 is the lowest level (routine operations).
2. The KUB Facilities Map and Wastewater Facility Addresses were updated.
3. Added a statement to Section 2.1 that contractors will manage all incidents that occur related to the transport of biosolids per the contractor's Biosolids Spill Response Plan.
4. Updated the contact list for properties located adjacent to the treatment plants in Appendix E.
5. All Appendices were reviewed and updated as needed.

Summary of changes made to the Sewer Overflow Response Plan (SORP)

1. Added definitions for SORP Field Manual, SORP Training Component, and Wastewater Collection and Transmission System (WCTS).
2. All references to Risk Management and Claims Administration Department were changed to Customer Support (throughout document).
3. All references to Water Quality Assurance Lab were changed to Regulatory Compliance Department (throughout document).
4. All references to "hot spots" were changed to "monitored locations" (throughout document).
5. Updated Information Technology Resources and Descriptions (Appendix A), Public Advisory Procedure Examples (Appendix B), General Sewer Overflow Response Plan Workflow (Appendix D), and Table of SORP Actions and Corresponding Responsibilities (Appendix F).
6. Added Volume Discharge Estimation Excel spreadsheets to Appendix C.
7. Removed Equipment and Employees List (previously Appendix D) and Spill Notification Contact List (previously Appendix E).
8. Added KUB's Organizational Chart as Appendix F.