

NOTES:

1. Z - LOK SEALS SHALL BE USED ON PIPE SLOPES IN EXCESS OF 18% AND LESS THAN 45%.
2. A MINIMUM 0.1 FT. DROP SHALL BE PROVIDED ACROSS NEW MANHOLES, UNLESS OTHERWISE NOTED ON THE DRAWINGS.
3. SEE SPECIFICATIONS 02530 SEWER MANHOLES AND 02532 SANITARY SEWERS.



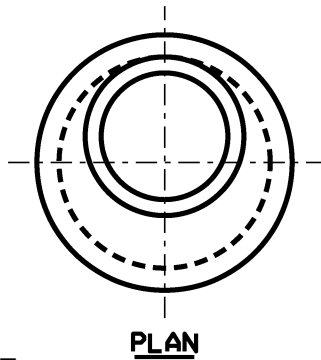
KNOXVILLE UTILITIES BOARD

DWG by - HH

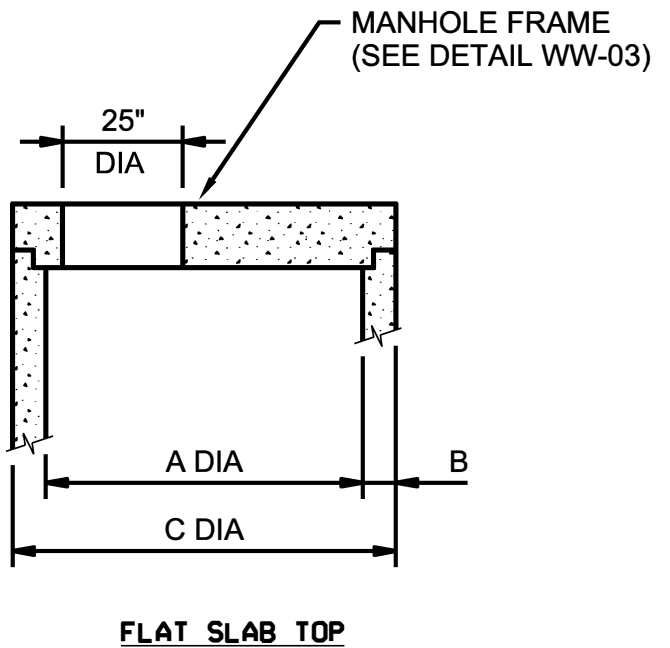
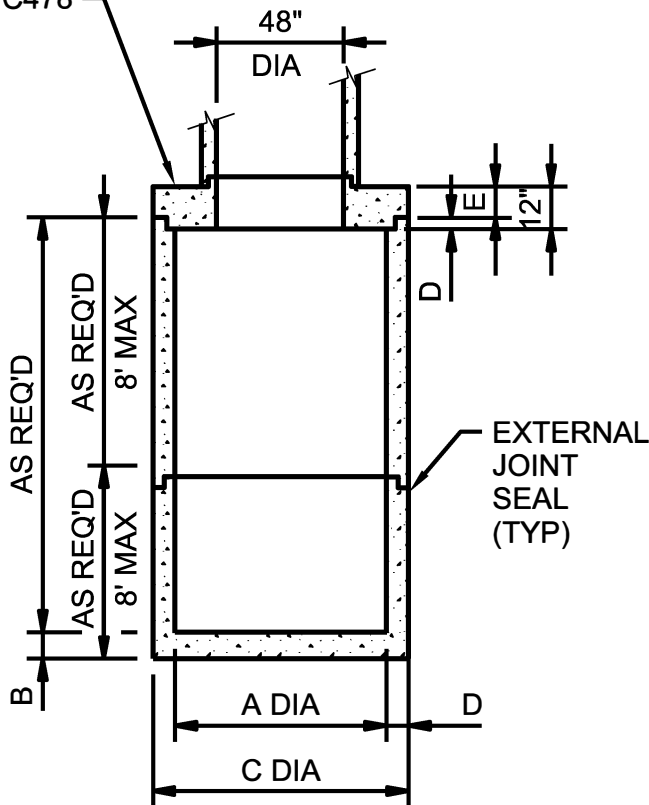
STANDARD PRECAST MANHOLE

Revision Date: 3-1-19

WW-01



PRECAST CONCRETE
MANHOLE SECTIONS PER
ASTM C478



A	B	C	D	E
60"	6"	72"	4"	8"
72"	7"	86"	4½"	7½"

NOTE:

1. FOR PIPE CONNECTIONS (SEE DETAIL WW-01).
2. SEE SPECIFICATION SECTION 02530 SEWER MANHOLES.



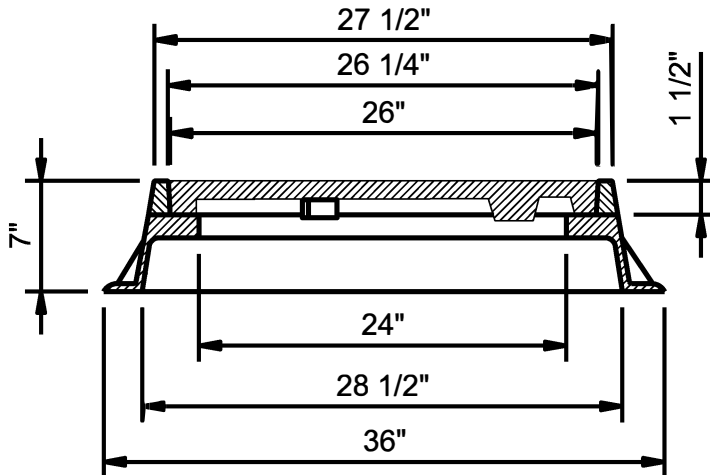
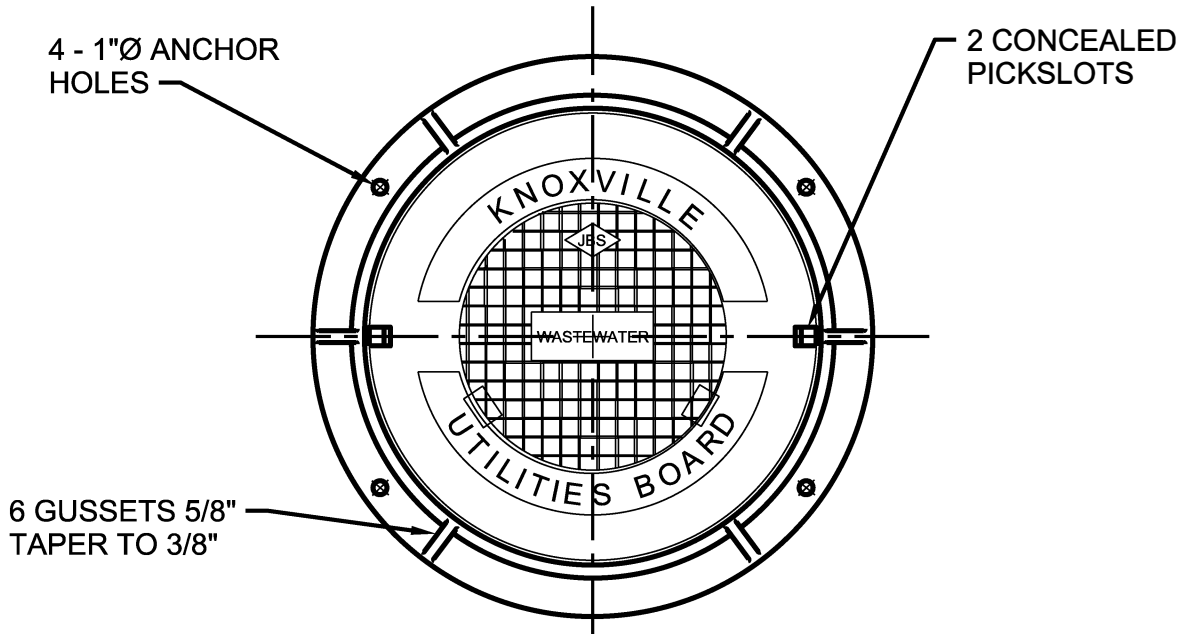
KNOXVILLE UTILITIES BOARD

PRECAST TRANSITION
MANHOLE 5' & 6' DIA

DWG by - HH

Revision Date: 3-1-19

WW-02



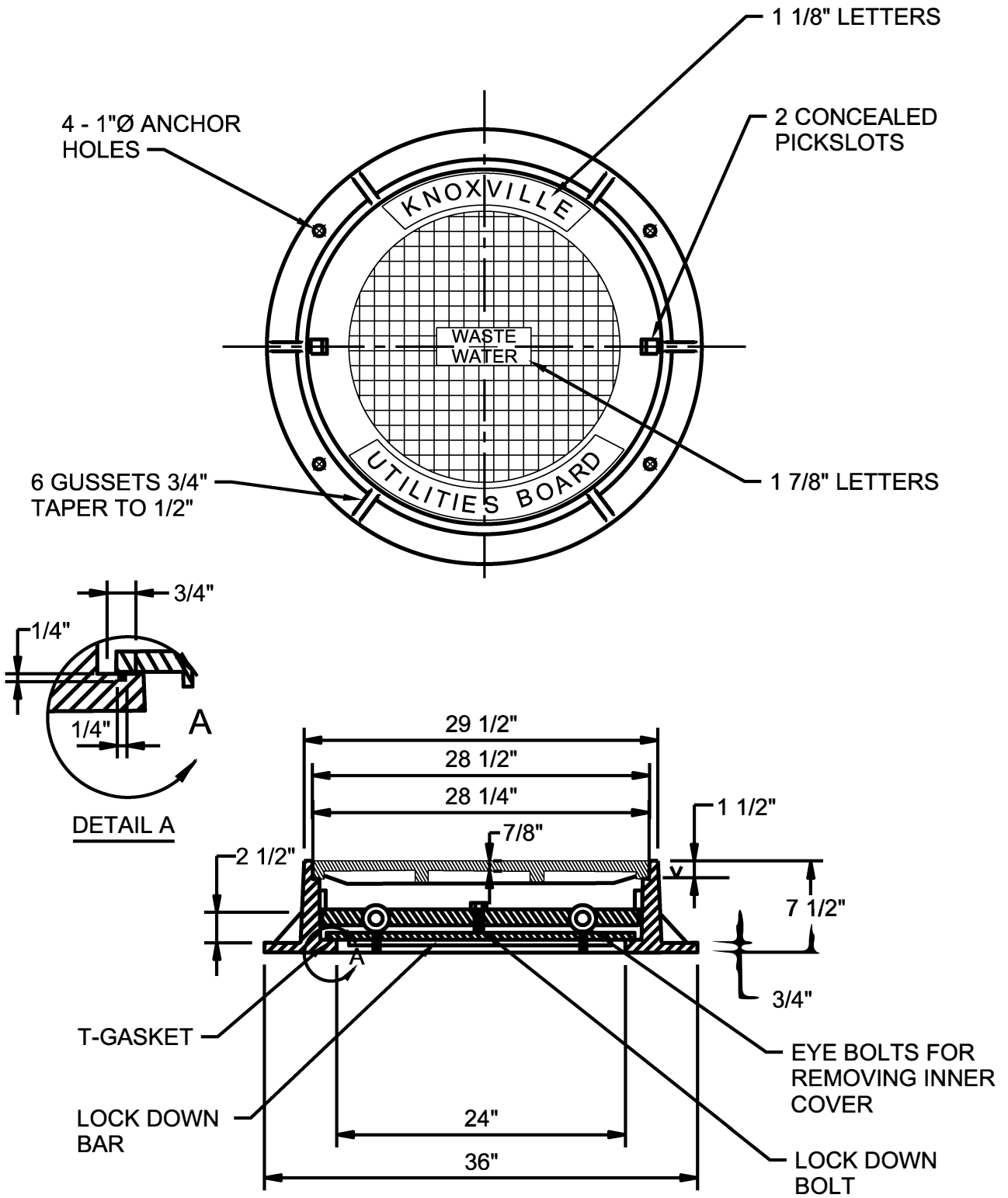
KNOXVILLE UTILITIES BOARD

DWG by - HH

STANDARD FRAME AND COVER

Revision Date: 3-1-19

WW-03A



KNOXVILLE UTILITIES BOARD

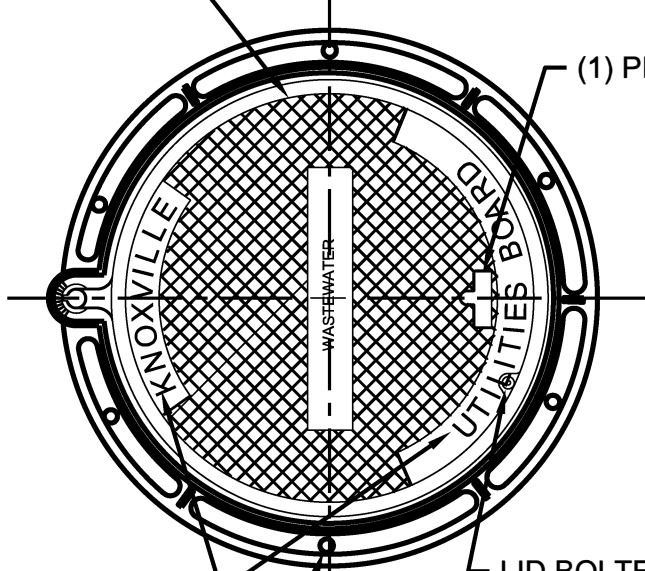
STANDARD WATER TIGHT
FRAME AND COVER

DWG by - HH

Revision Date: 3-1-19

WW-03B

TYPE "C" LID DESIGN
W/PERMAGRIP (SP)
TEXTURE

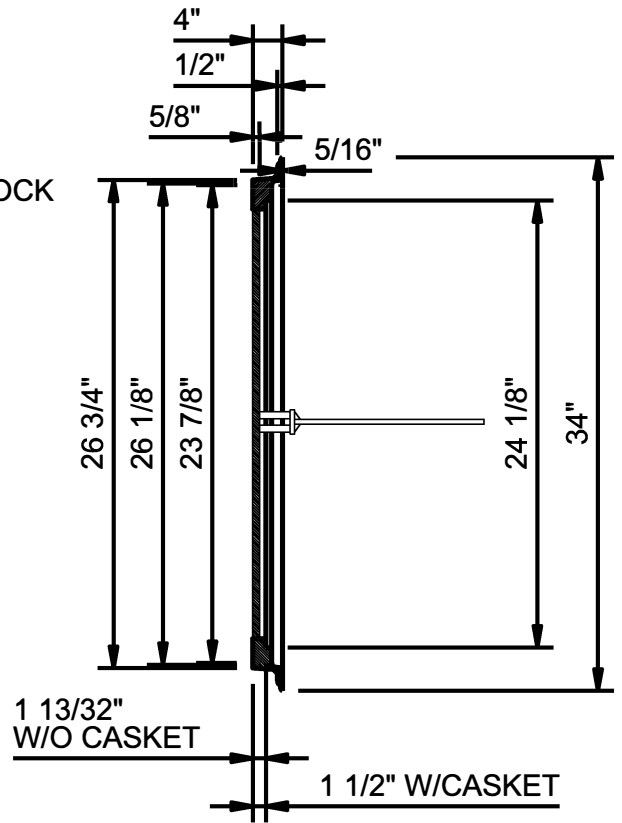


(1) PICKMATTOCK

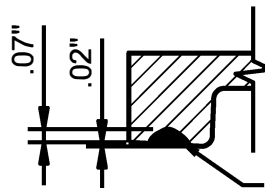
2" HIGH RAISED
LETTER FLUSH
W/TOP SURFACE

LID BOLTED TO
FRAME
W/ 1/2-13 X 1 3/4"
STEEL HEX BOLT

(6) 1 1/8" DIA ANCHOR
BOLT HOLES ON A 29
11/16" DIA B.C.

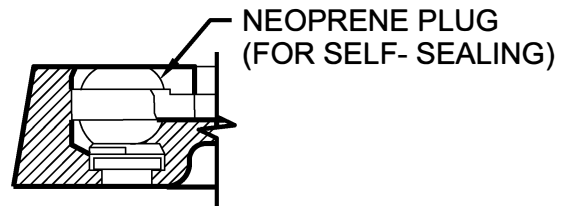


HOLD OPEN DEVICE



OIL -RESISTANT CASKET.
NITRILE (60 DUROMETER)

"T-SEAL" CASKET DETAIL



NEOPRENE PLUG
(FOR SELF- SEALING)

FRAME SHOWING HINGE PLUG (OPTIONAL)



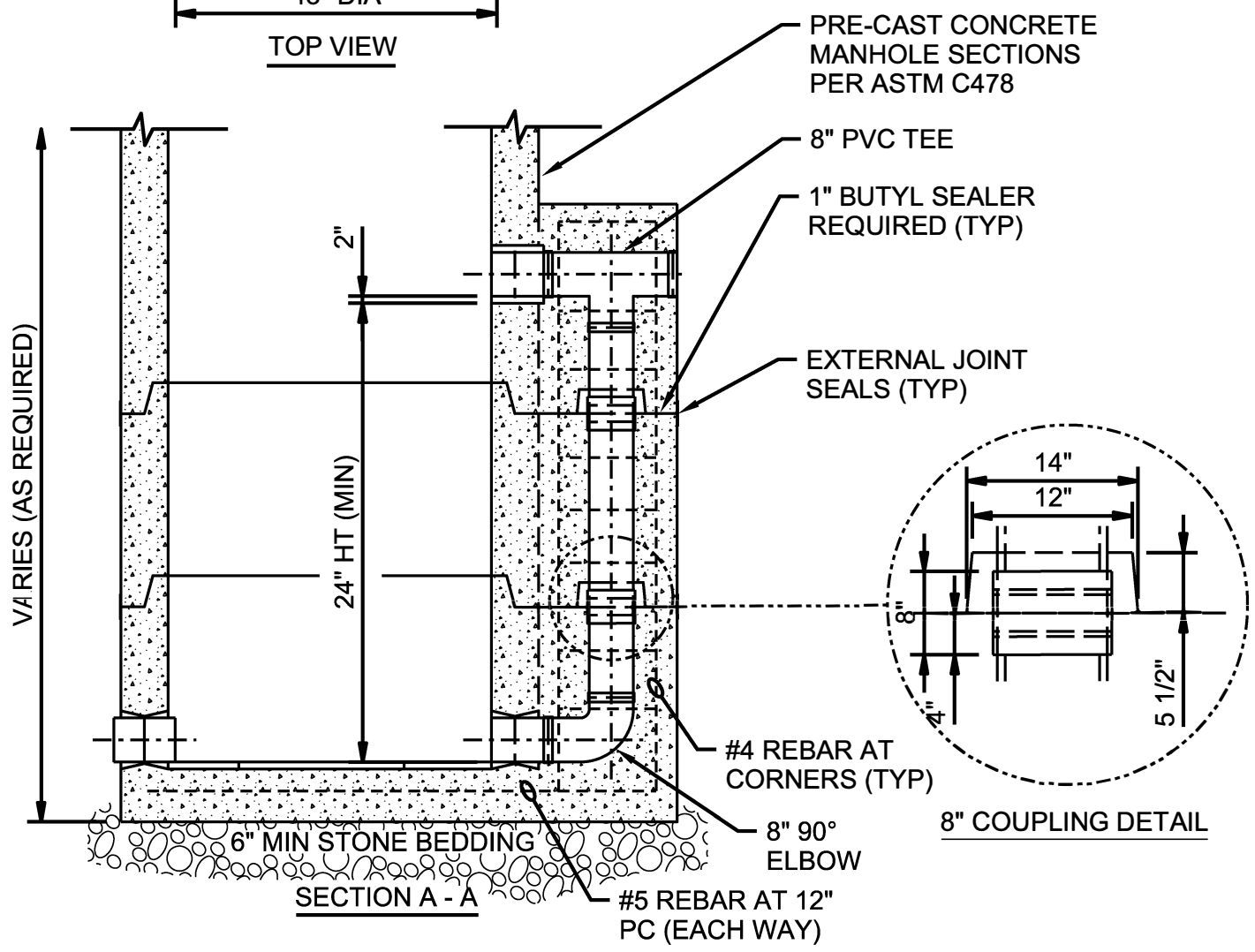
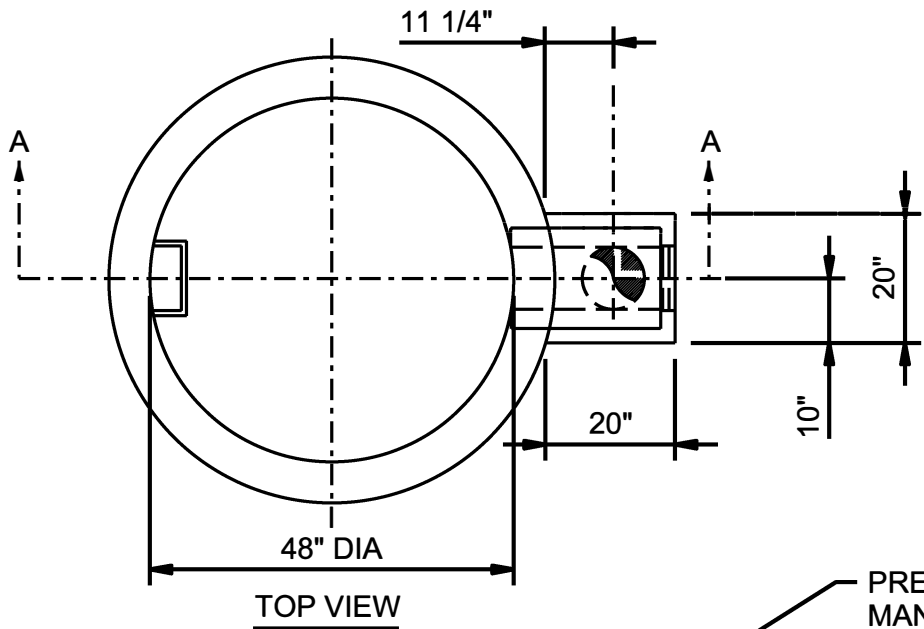
KNOXVILLE UTILITIES BOARD

DWG by - HH

HINGED FRAME AND COVER

Revision Date: 3-1-19

WW-03C



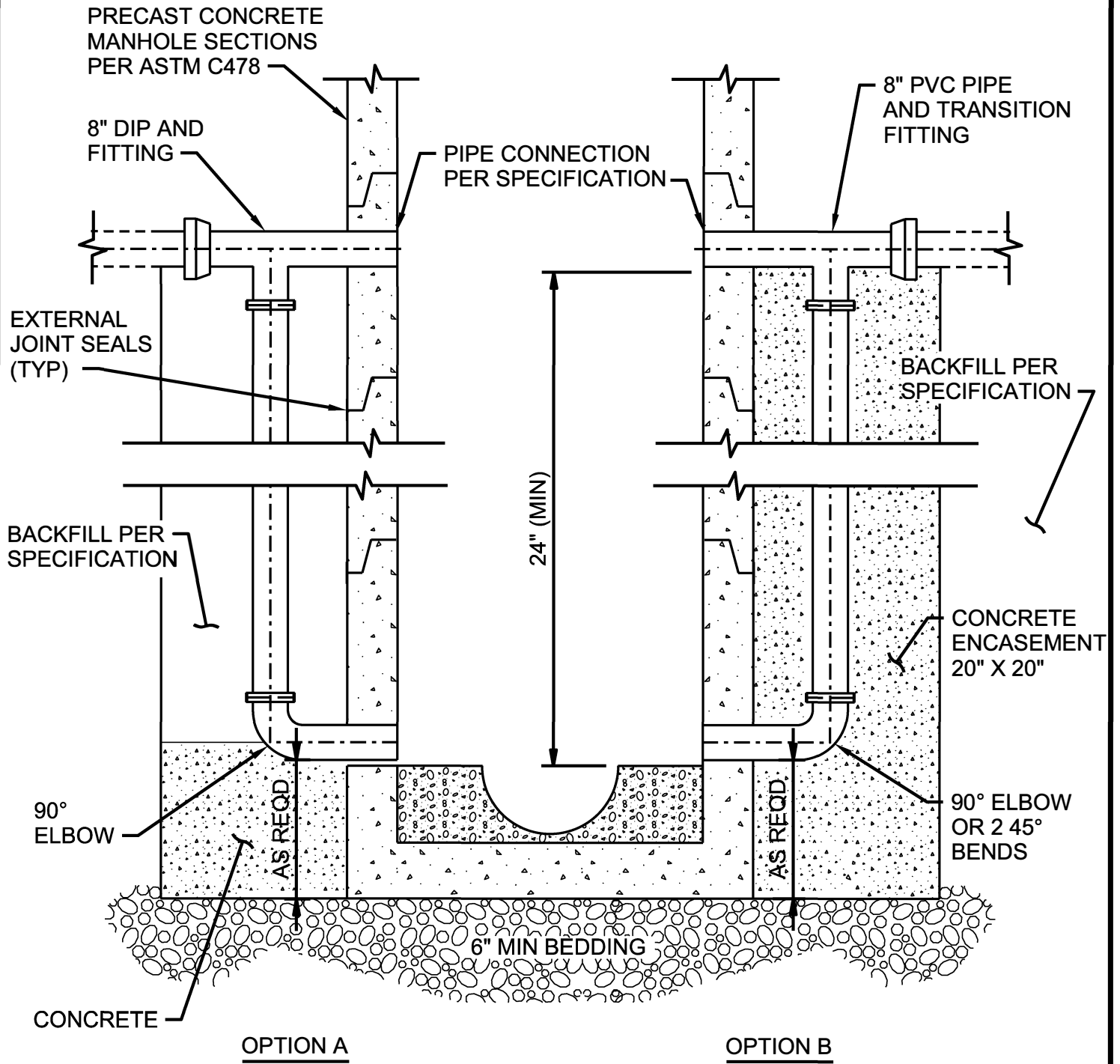
KNOXVILLE UTILITIES BOARD

STANDARD PRE-CAST
DROP MANHOLE

DWG by - HH

Revision Date: 3-1-19

WW-04A



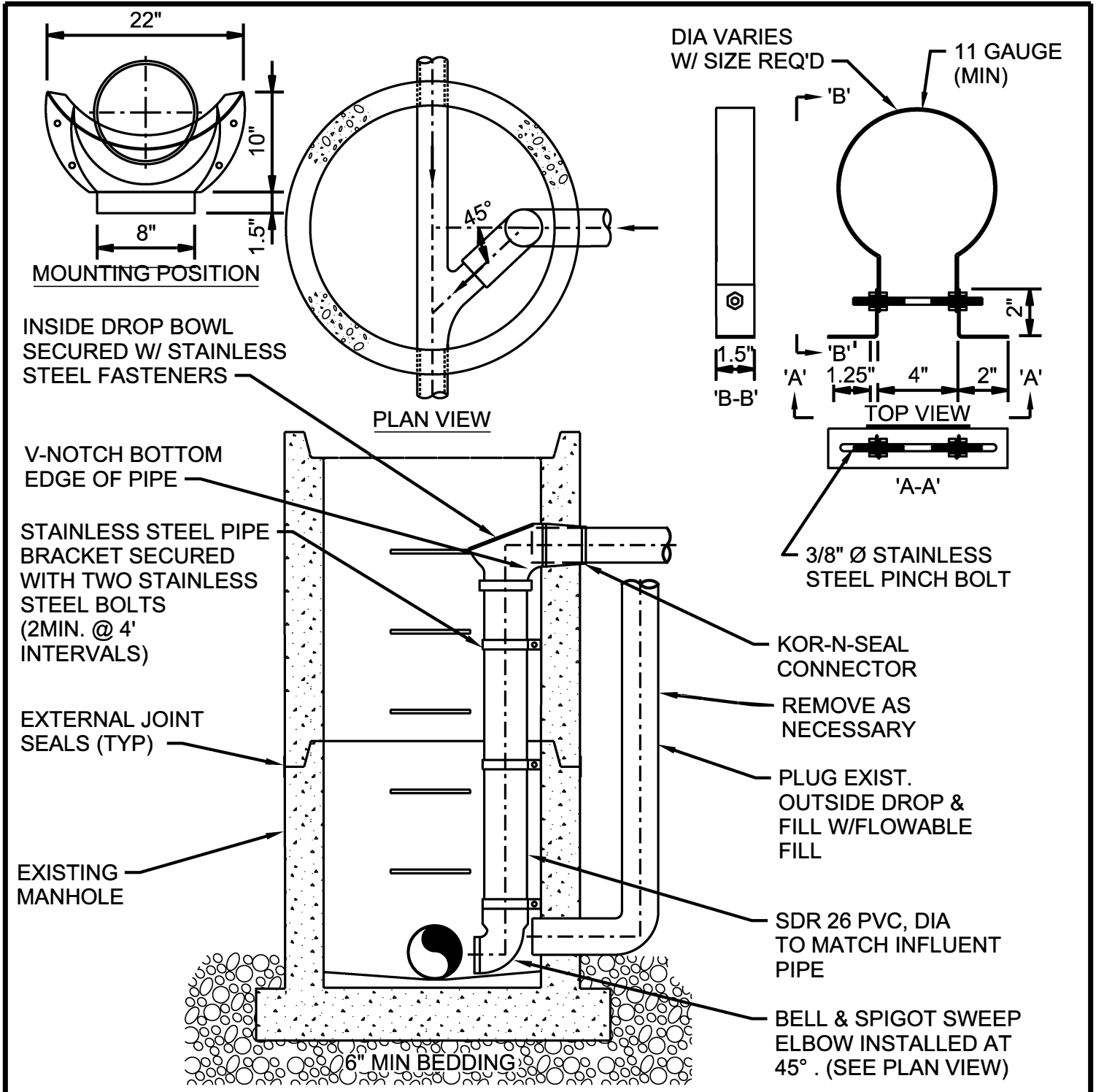
KNOXVILLE UTILITIES BOARD

DWG by - HH

FIELD FABRICATED
DROP MANHOLE

Revision Date: 3-1-19

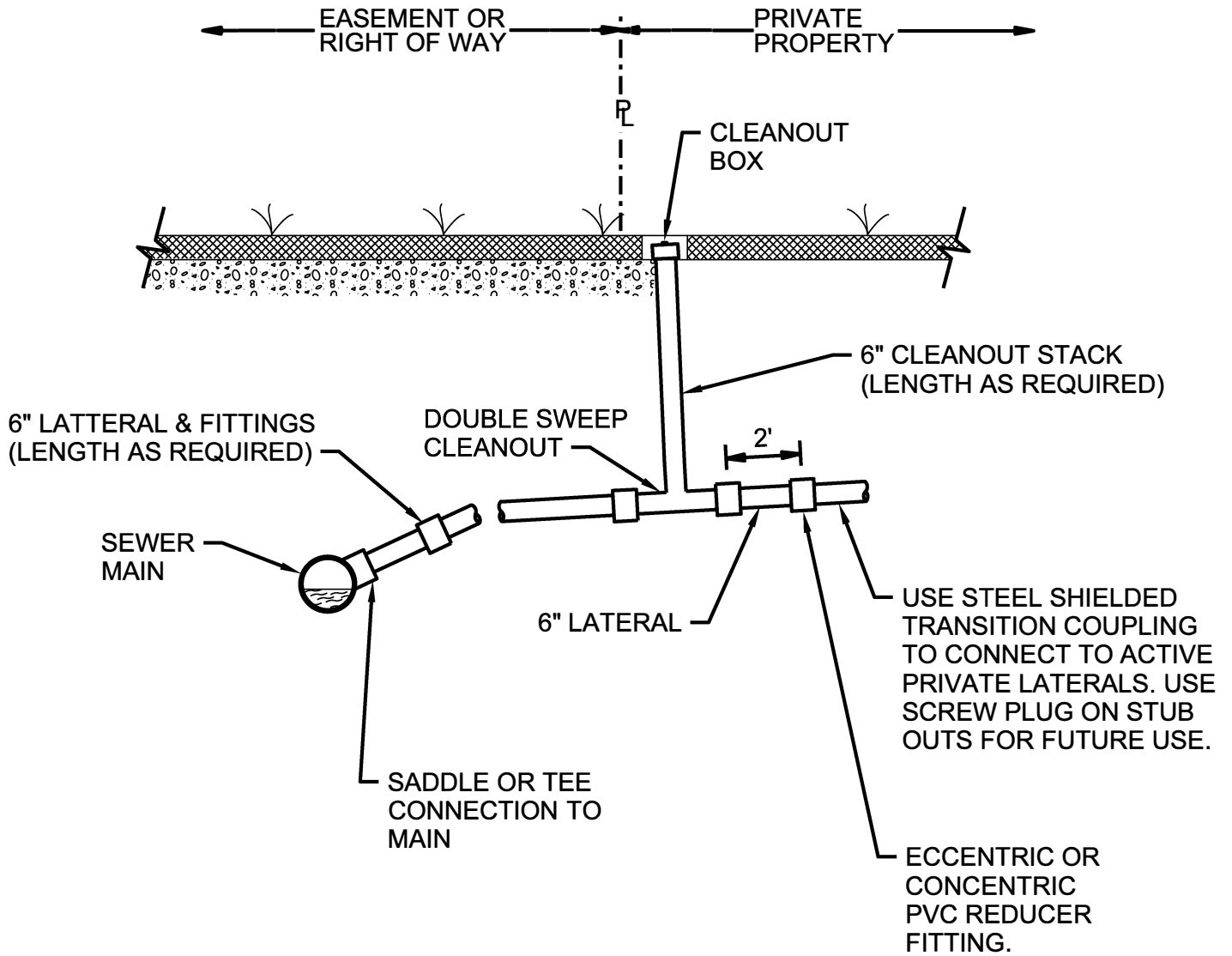
WW-04B



NOTES:

1. CLAMP AND BRACKETS SHALL BE 11 GAUGE, TYPE 304 STAINLESS STEEL.
2. 3/8 Ø PINCH BOLT AND NUTS SHALL BE TYPE 18-8 STAINLESS STEEL.

	KNOXVILLE UTILITIES BOARD	DWG by - HH
	INSIDE DROP ON EXISTING MANHOLE	Revision Date: 3-1-19
		WW-04C



NOTES:

1. SEE SPECIFICATION 02532 SANITARY SEWERS



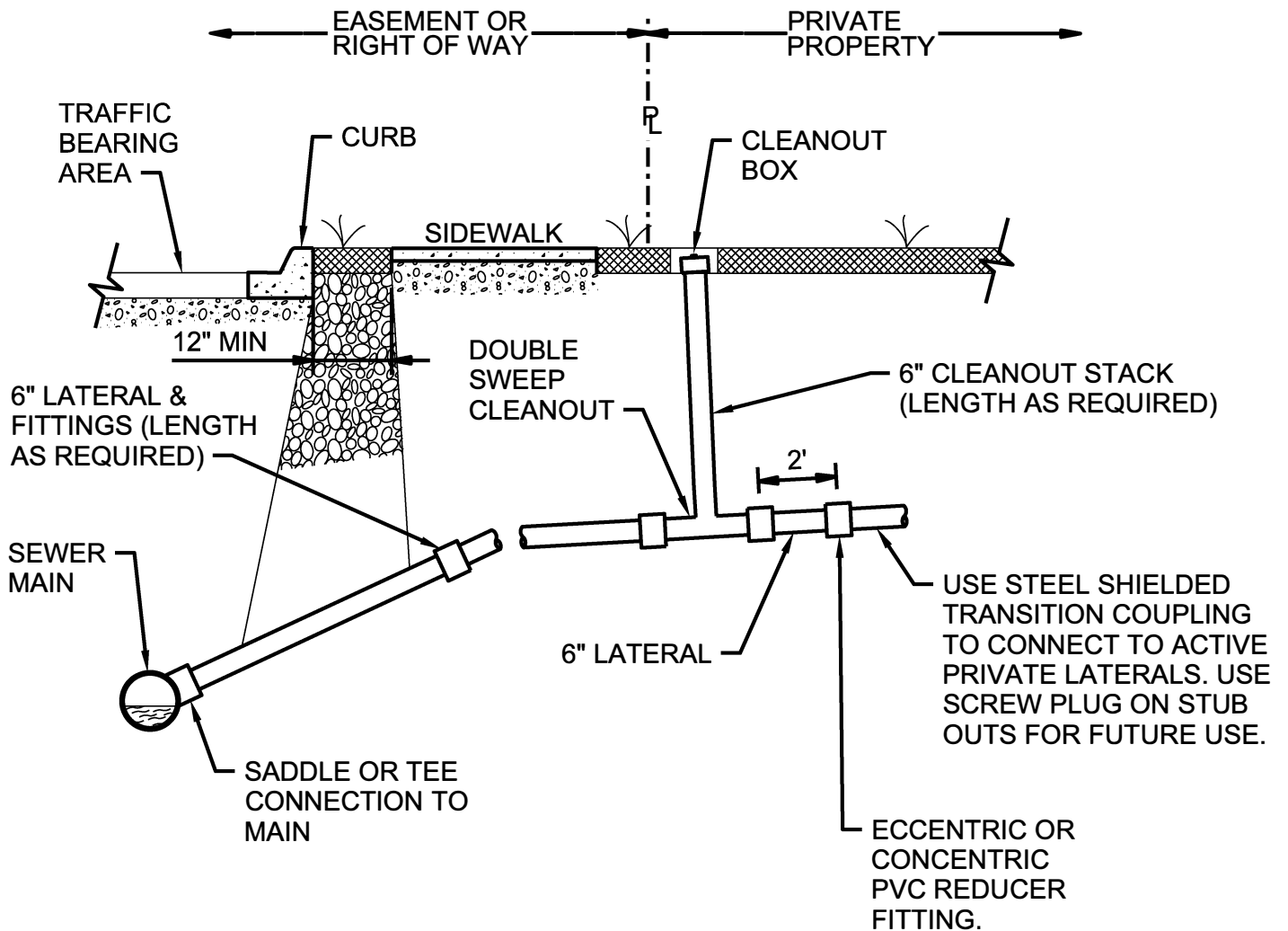
KNOXVILLE UTILITIES BOARD

DWG by - HH

SEWER LATERAL
(NON - TRAFFIC BEARING)

Revision Date: 3-1-19

WW-05A



NOTES:

1. TO PREVENT UNDERMINING OF TRAFFIC BEARING AREA , A CLASS A GRADE D AGGREGATE BULKHEAD SHALL BE INSTALLED BETWEEN THE CLEANOUT STACK AND TRAFFIC BEARING AREA. THE BULKHEAD SHALL BE FULL TRENCH WIDTH AND DEPTH AND COMPACTED IN 12-INCH LIFTS USING VIBRATORY COMPACTION EQUIPMENT. THE BULKHEAD SHALL BE A MINIMUM OF 12-INCHES THICK AT THE SURFACE ELEVATION AND TAPER AS NEEDED TO FORM A COMPACT COLUMN.
2. SEE SPECIFICATION 02532 SANITARY SEWERS.



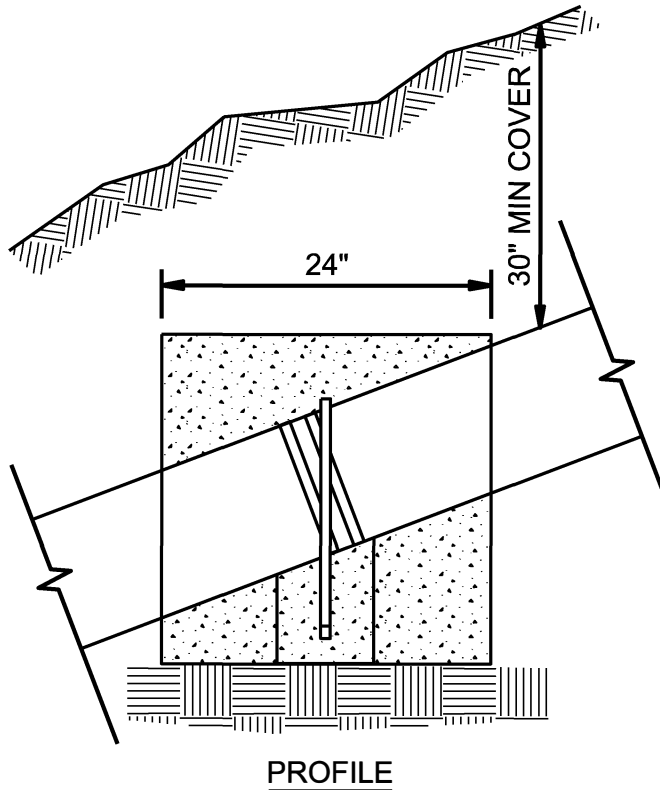
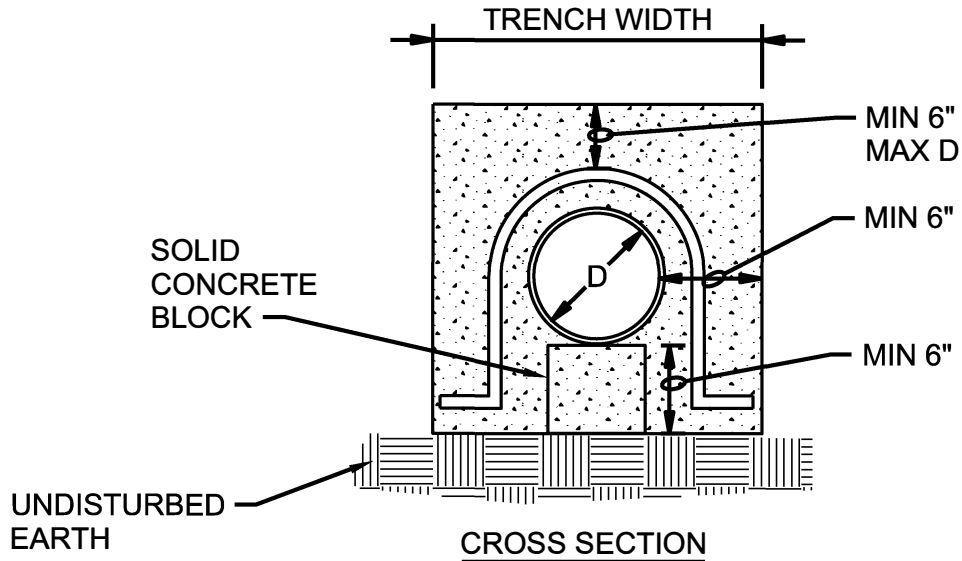
KNOXVILLE UTILITIES BOARD

DWG by - HH

SEWER LATERAL
(TRAFFIC BEARING)

Revision Date: 3-1-19

WW-05B



NOTES:

1. FOR PIPE DIAMETERS >24" DIMENSIONS WILL INCREASE AS INDICATED ON THE PROJECT DRAWINGS.



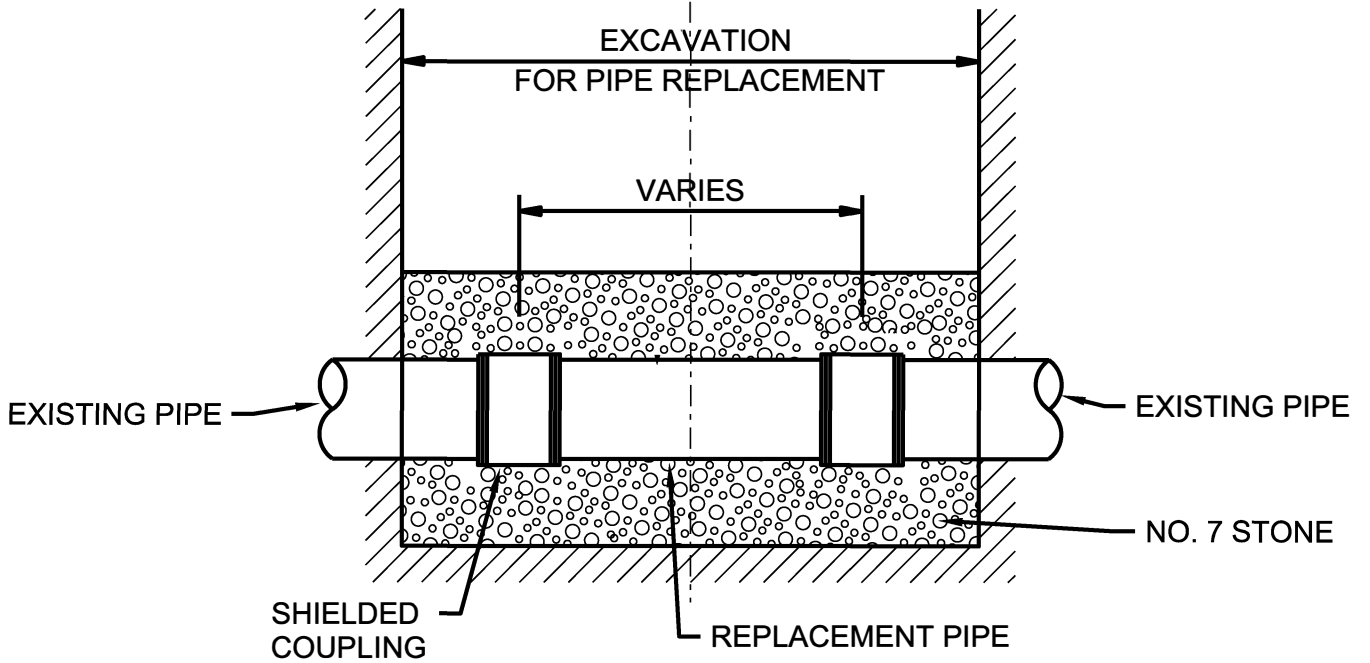
KNOXVILLE UTILITIES BOARD

DWG by - HH

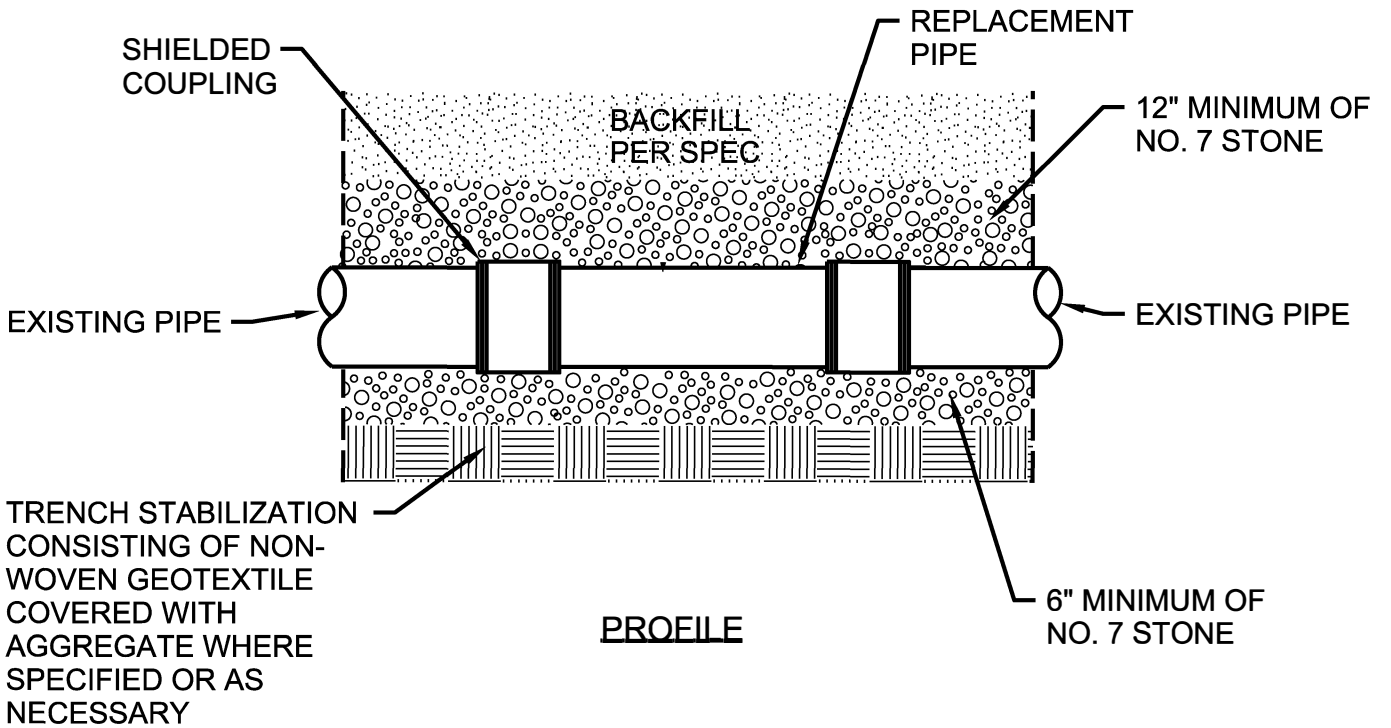
CONCRETE ANCHOR DETAIL

Revision Date: 3-1-19

WW-06



TOP VIEW



KNOXVILLE UTILITIES BOARD

DWG by - HH Revision

MAINLINE POINT REPAIR DETAIL

Date: 3-1-19

WW-07